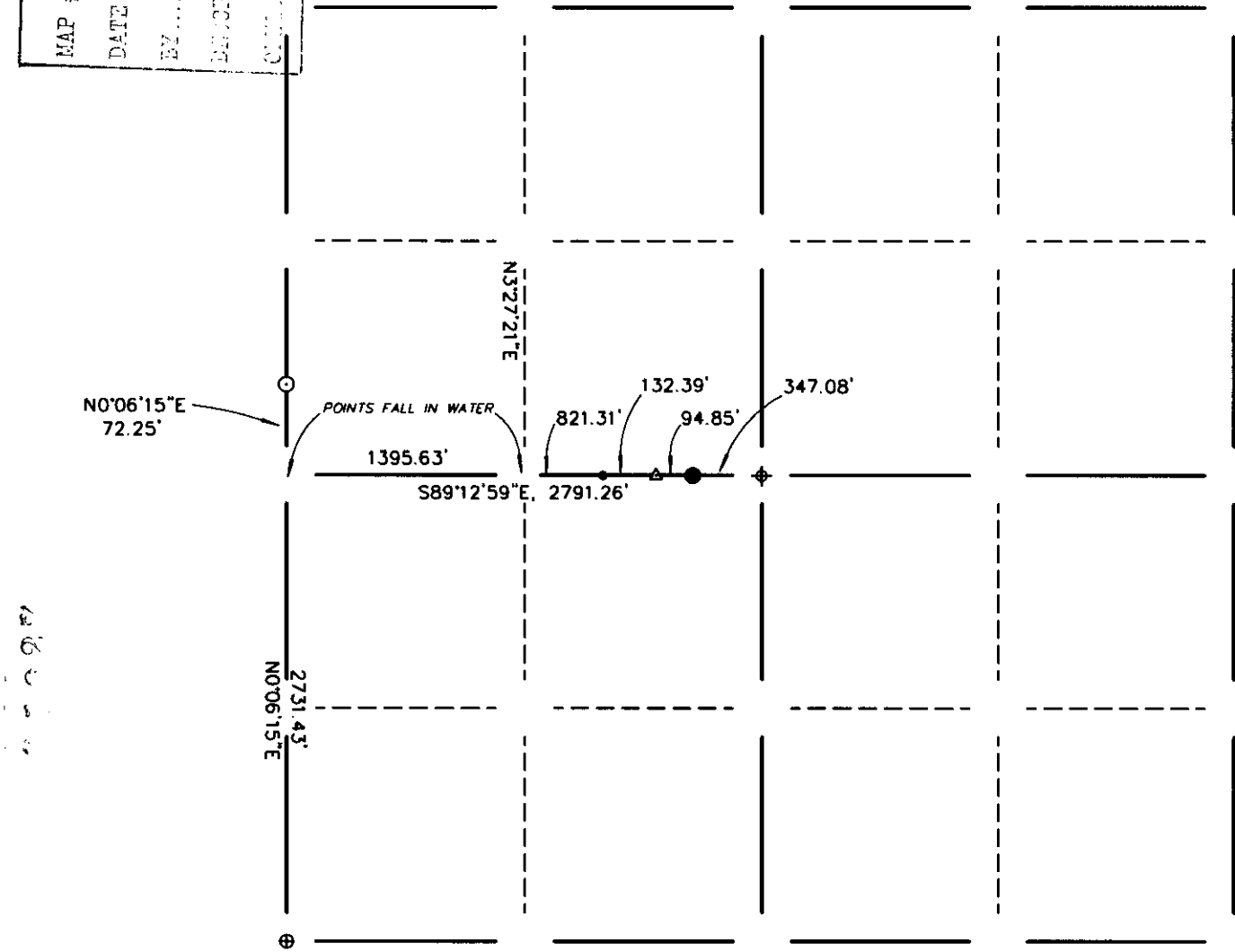


MAP # **L 1927**  
 DATE FILED **MAR 14 2003**  
 BY .....  
 DEPARTMENT FILED .....  
 ONEIDA CO. SURVEYOR'S OFFICE

**Oneida  
 County  
 Surveyor**

SECTION 3 — 36 — 5E  
 SUMMARY Section Township Range  
Little Rice  
 Town



**LEGEND**

- - 7/8" Rebar (WCD)
- △ - Survey sign (WCD)
- ⊕ - 2" Iron Pipe with WCD Brass Cap
- ⊙ - 4" Iron Pipe
- - 1" Iron Pipe
- ⊕ - 2" Alum. Pipe with WCD Alum. Cap



CERTIFIED CORRECT:  
William W. Nutter, RLS  
William W. Nutter, S-2299  
 Registered Land Surveyor  
 DATE: 2-27-2003