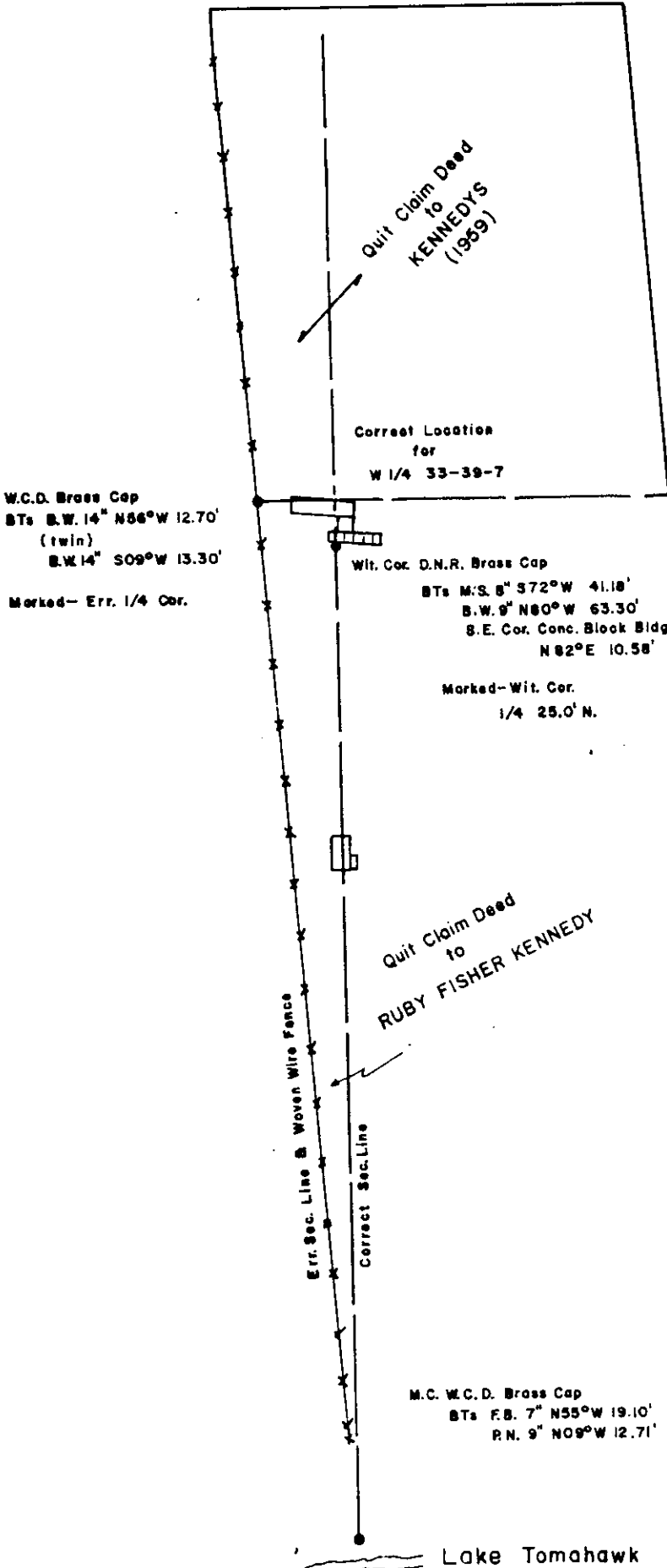


MAP # **L1936**  
 DATE FILED **BY 1 1 1983**  
 BY .....  
 DESCRIPTION FILED .....  
 ONEIDA CO. SURVEYOR'S OFFICE

NOTE: Correct location of W1/4 Cor. determined by reference to surveys by Hall (1945) and by John Fisher (1974).



**W 1/4 COR. LOC.**  
 T39N, R7E Oneida Co.  
 Sec. 33

- SCALE -  
 1" = 100' (approx)

Lake Tomahawk

3/26/81 N.L. Vissers

1936

L1936