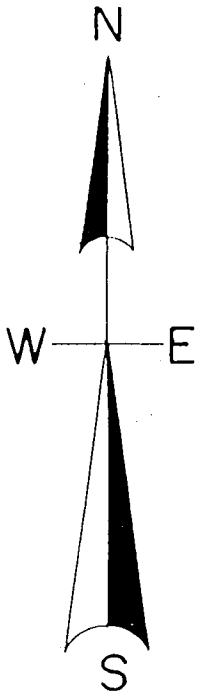
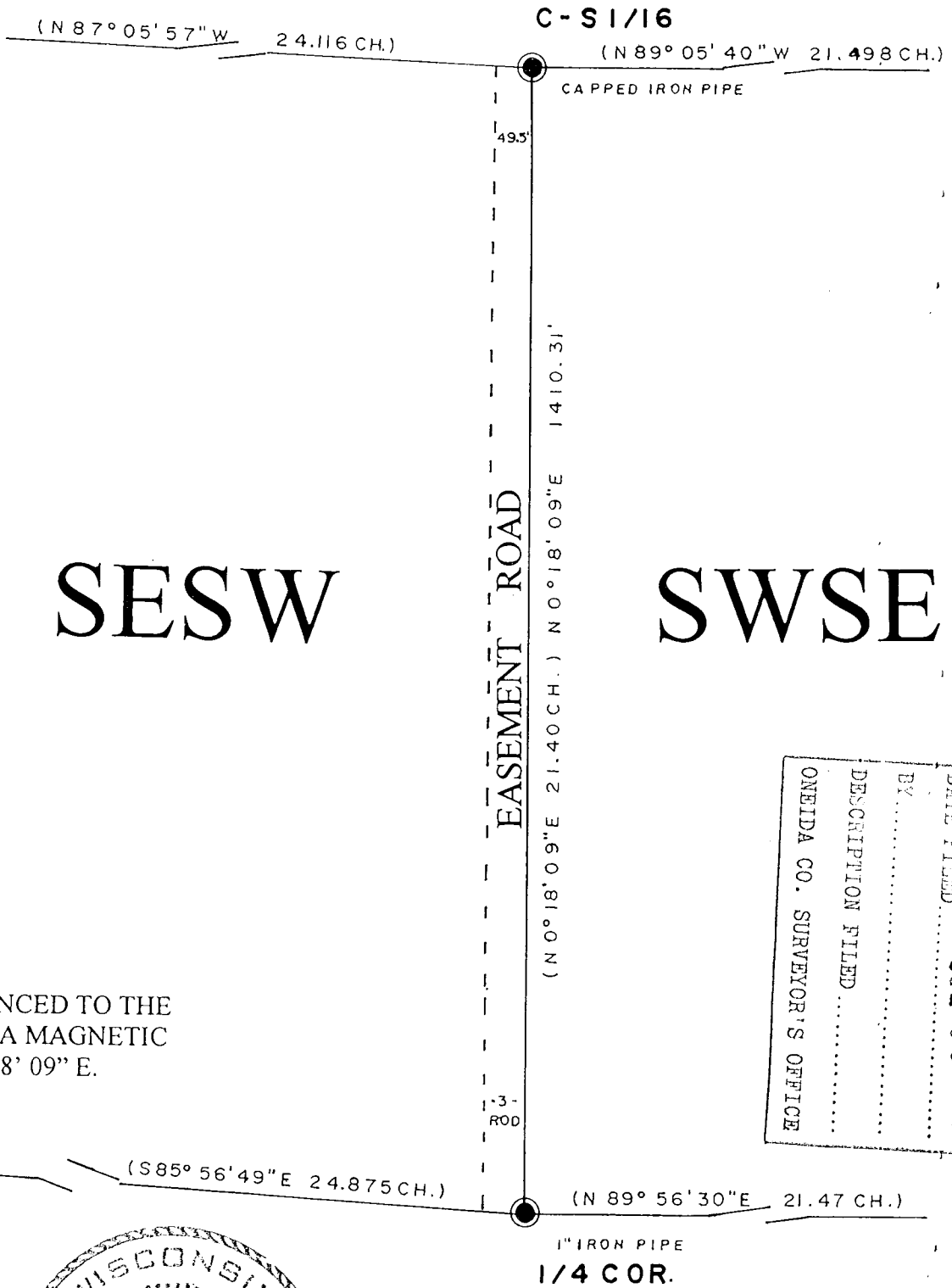


L1941

L1941

PART OF THE N-S 1/4 LINE, SEC. 17, T. 37 N., R. 9 E., TOWN OF PINE LAKE, ONEIDA COUNTY, WI.

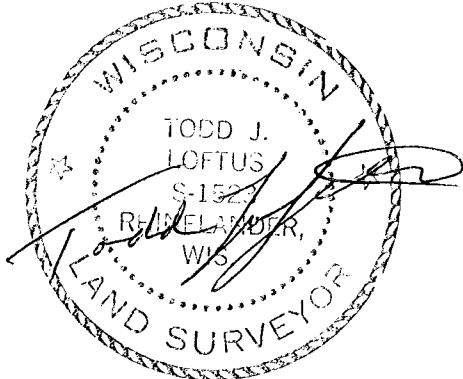


SESW

SWSE

NORTH IS REFERENCED TO THE
N-S 1/4 LINE BEING A MAGNETIC
BEARING OF N 0° 18' 09\" E.

MAP #	1941
DATE FILED	JUL 29 2003
BY	
DESCRIPTION FILED	
ONEIDA CO. SURVEYOR'S OFFICE	



June 26, 2003

I, Todd Loftus, Registered Land Surveyor, hereby certify that I have surveyed
The line shown hereon. That this map represents an accurate survey of said
Line to the best of my knowledge & belief. That I have performed this survey
By order of Dale Knetter and that I have complied with the
Applicable requirements of the Wisconsin Administrative Code A.E.7.

LEGEND

- SUBDIVISIONAL MONUMENT OF RECORD
- (O.O) BEARING & DISTANCE OF RECORD

SCALE

1" = 200'

1329B3

L1941

L1941