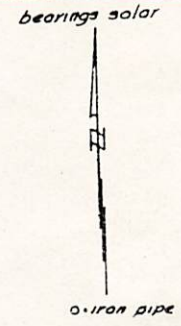
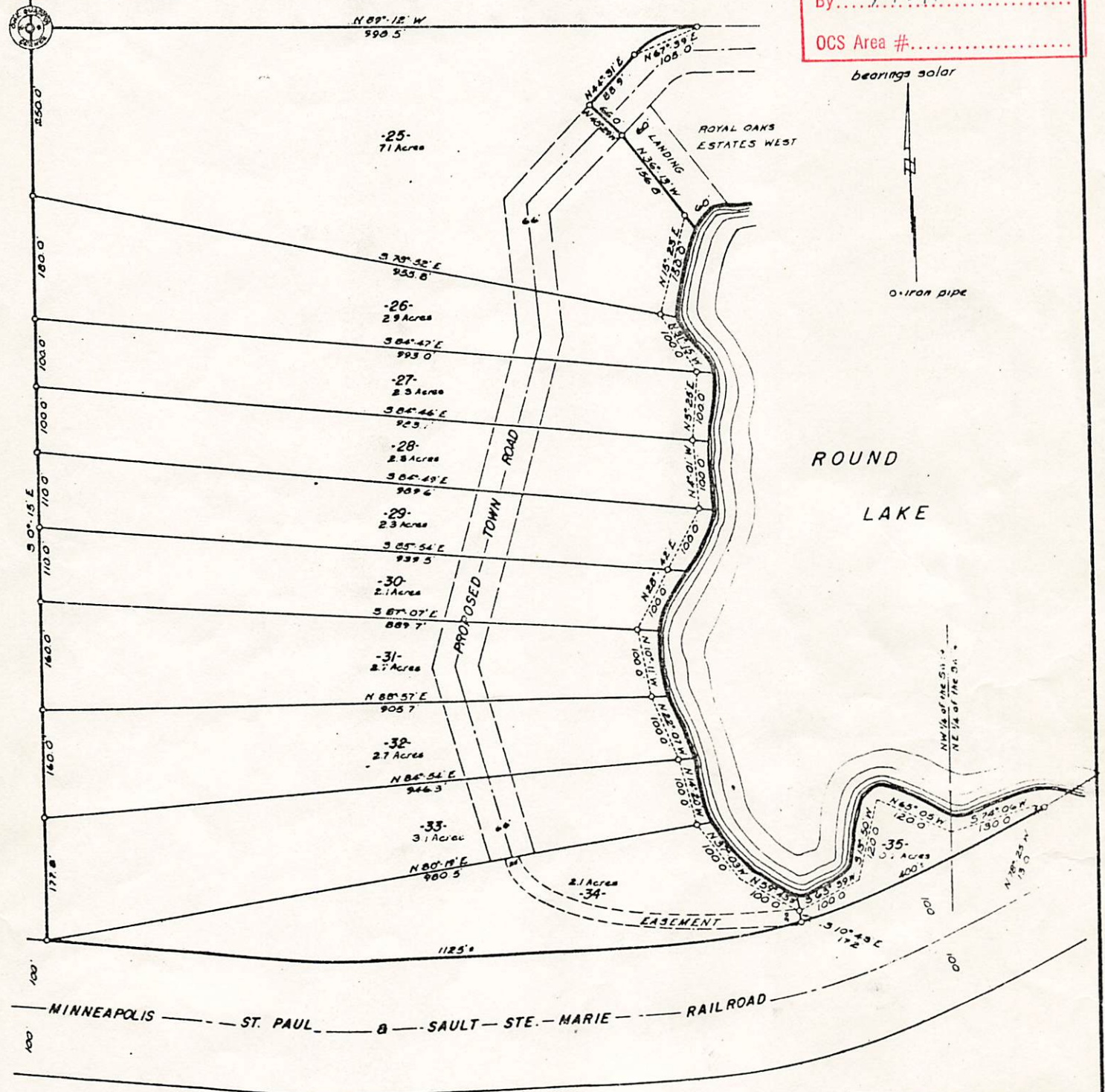


RECEIVED & FILED # **L195**
 Oneida County Surveyor's Office
 Date **FEB. 14 1988**
 By **MJH**
 OCS Area #.....

9' Oak
 354' W, 231' N 58° N, 106'
 9' Oak
 N 58° N, 170' 557° E, 340'



Part of
 NW 1/4 of the SW 1/4 and NE 1/4 of the SW 1/4
 SECTION 9, T36N, R8E
 Oneida County, Wis.

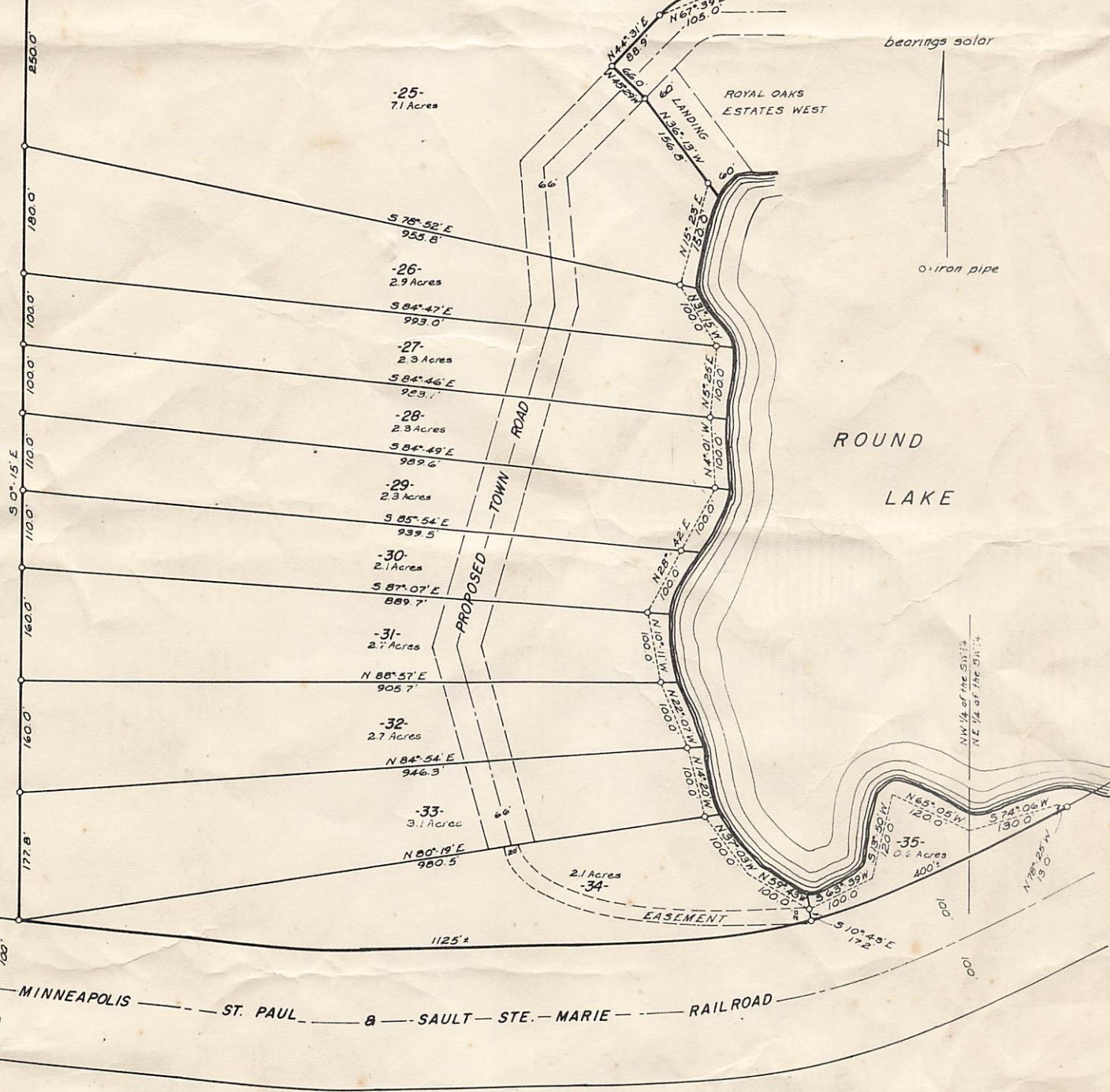
RECEIVED & FILED **A3001**
 Oneida County Surveyor's Office
 Date **2 Nov '77**
 By **D. M. Winst**
 OCS Area # **11812-9-3608**

96 TT
 July, 1967

Northwoods Surveyors
 Land Surveyor

J. Fine

9' Oak
3 54' W, 23.1'
7' Oak
N 56° N, 10.6'
9' Oak
N 38° W, 17.0'
10' Oak
S 37° E, 34.0'



Part of
 NW 1/4 of the SW 1/4 and NE 1/4 of the SW 1/4
 SECTION 9, T 36 N, R 8 E
 Oneida County, Wis.

July, 1967

Northwoods Surveyors
James J. Hoff
 Land Surveyor

J. Fisher

925-C-6-71/11