

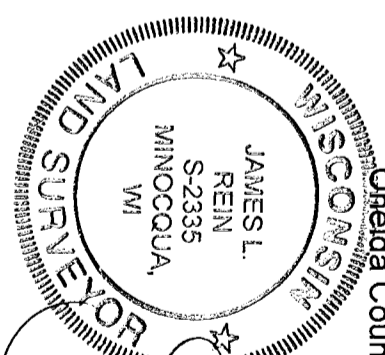
Part of the

# NE 1/4 of the SW 1/4 SECTION 27, T38N, R6E

Hazelhurst Township

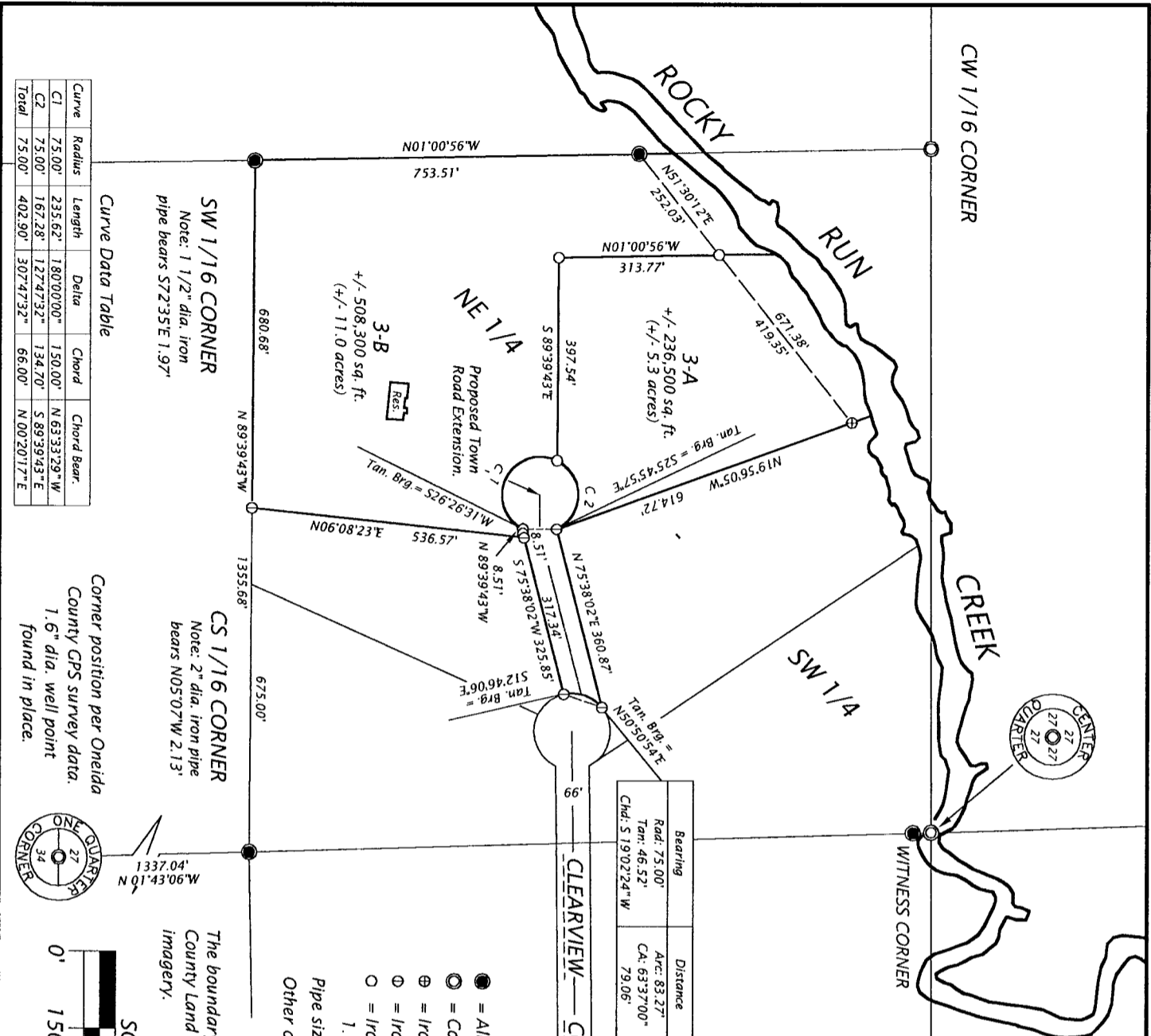
Oneida County, Wisconsin

## WILDERNESS SURVEYING, INC.



*James L. Rein*  
Dated this 7th day of August, 2003.  
Registered Land Surveyor No. S-2335

Bearings Grid,  
based on Oneida County  
Coordinate System



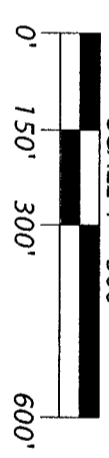
Bearing	Distance
Rad: 75.00'	Arc: 83.37'
Tan: 46.53'	Ch: 93.3700'
Chd: S19°02'24"W	79.06'

### LEGEND

- = Alum. capped 1.0" dia. x 48" long iron pipe previously set
  - ⊙ = Corner position not monumented by this survey.
  - ⊕ = Iron pipe previously set, 1.0" dia. x 48" long.
  - ⊖ = Iron pipe previously set, 1.0" dia. x 24" long.
  - = Iron pipe set, 1.0" dia. x 24" long, weighing 1.13 lbs per lineal foot.
- Pipe sizes are outside diameter dimension.  
Other corner monuments are as noted.

**NOTE:**  
The boundary of the creek shown hereon is based upon Oneida County Land Information digital data obtained from photographic imagery.

SCALE 1" = 300'



Curve Data Table

Curve	Radius	Length	Delta	Chord	Chord Bear.
C1	75.00'	235.62'	180°00'00"	150.00'	N 63°33'29"W
C2	75.00'	167.28'	127°47'32"	134.70'	S 89°39'43"E
Total	75.00'	402.90'	307°47'32"	66.00'	N 00°20'17"E

**SW 1/16 CORNER**  
Note: 1 1/2" dia. iron pipe bears S72°35'E 1.97'

**CS 1/16 CORNER**  
Note: 2" dia. iron pipe bears N05°07'W 2.13'

Corner position per Oneida County GPS survey data.  
1.6" dia. well point found in place.



MAP #	11954
DATE PLOTTED	SEP 5 2003
BY	JL
DESCRIPTION	ONEIDA CO.

**WILDERNESS SURVEYING, INC.**  
Post Office Box 1111 - 8793 Ears Court  
Minocqua, Wisconsin 54458  
Tel. (715) 356-5100  
www.wildernesssurveying.com

Map No. 03-49p  
File No. 11-27-386  
Drafted by: MLO  
Sheet 1 of 3 sheets