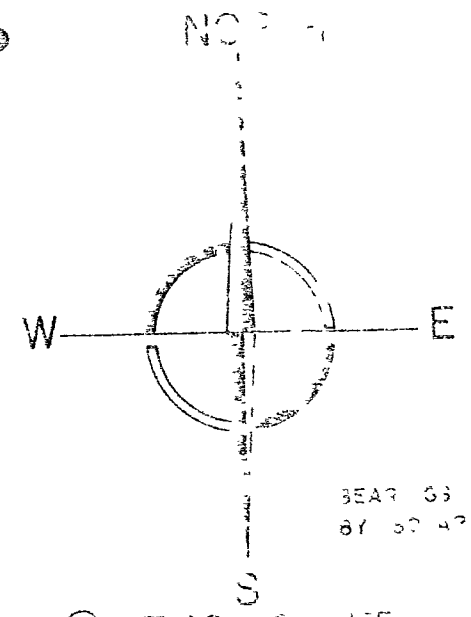
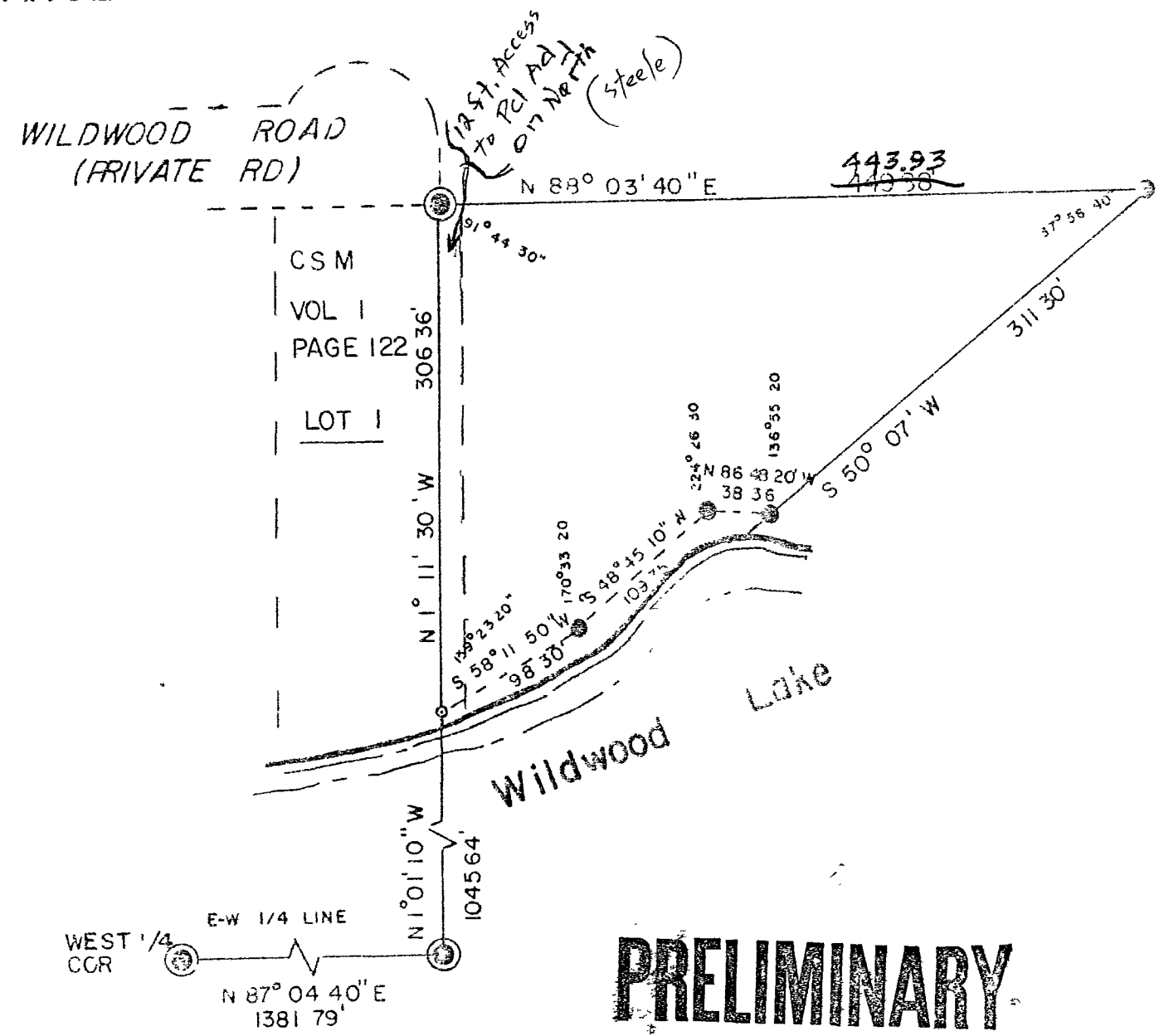


Part of SOUTHEAST 1/4 NORTHWEST 1/4 SECTION 23 TOWNSHIP 37 NORTH
RANGE 8 EAST TOWN OF NEWBOLD ONEIDA COUNTY WISCONSIN

MAP # L 1963
DATE FILED 12/30/03
BY *AK*
DESCRIPTION FILED
ONEIDA CO SURVEYOR'S OFFICE



- ③ FOUND PIPE
- FOUND PIPE
- ③ SET 2" PIPE #365

GENESIS SURVEYING ASSOCIATES
PANEL 100

PL SE NW
S23-T37-R8