

LANDMARK MONUMENT PRESERVATION RECORD

It is the intent of this record to preserve the location of any landmark monument subject to disturbance, removal and/or inaccessibility for future identification, location or verification purposes by a subsequent land survey of public record.

County: Oneida City, Village, Town: Cassian Section: 14 Town: 37 N Range: 7 E

Description of Landmark Monument and location history if known: (Recovery at the request of Oneida Co. Surveyor Romportl/8-17-99)

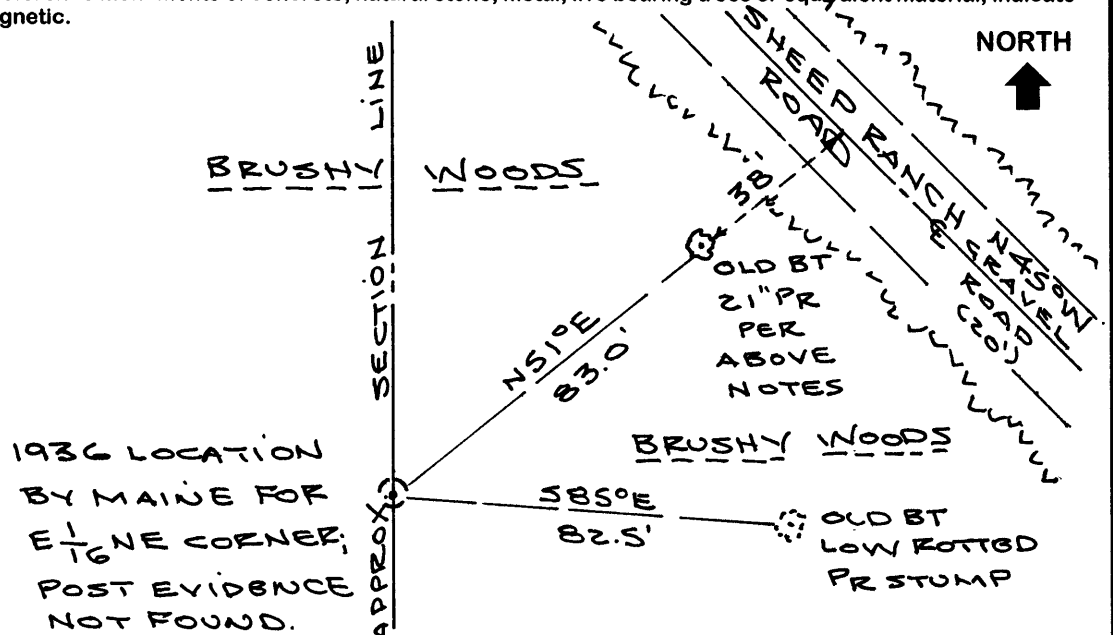
On September 26, 1936, Maine set an oak stake at the East 1/16NE of Section 14 and marked BT's: a 12" Py stump S85°E at 1.25 chains, now found as a low rotted root crown by position only, and a 10" Py N51°E at 1.2575 chains, now a healthy 21" Pr with lower SW face blaze open and plain above root crown and probable darkened vein of upper face blaze below shaved outer bark surface. I nailed a Std BT sign to upper NE face of the above NE old BT and painted the old face blaze fluorescent orange. The BT is located about 38 feet SW of an existing graveled roadway, bearing N45°W, named Sheep Ranch Road.

I then compassed S51°W from the old NE Pr BT a distance of 1.2575 chains, or 83 feet, thru very thickly grown understory brush and new growth Aspen and searched for remains of Maines oak wood post, which I could not find any positive remnants of due to numerous scattered, fallen and decaying wood tree debris on the ground.

I did not reset the corner from found record NE BT face, as the corner would be located at least 100 feet westerly of Sheep Ranch Road, which reportedly is pending widening by the Town of Cassian.

Plan view map of landmark monument location to scale with magnetic compass bearing and horizontal distance ties to a minimum of three(3) described witness or reference monuments of concrete, natural stone, metal, live bearing trees or equivalent material; indicate the basis for bearings if not magnetic.

SCALE: 1" = 40'



Unless otherwise indicated, all bearing tree ties are to a .25" dia. by 2.5" long PK nail with a 1.25" dia. steel washer driven into unblazed right face and a .25" dia. by 2.5" long PK nail with a 2" dia. steel washer stamped 'BT' is also driven into unblazed face of bearing tree at DBH; the basis for measured bearings is magnetic to nearest degree and all tie distances are horizontal measure to nearest 1/100th feet.

Seal:



PROFESSIONAL LAND SURVEYOR CERTIFICATE:

I, William C. Rohde, hereby certify that I am currently a duly licensed Professional Land Surveyor in the State of Wisconsin; that the location of this Landmark Monument was determined by me, or under my direct supervision and control, for preservation purposes only and without any attestation of correctness, so that verification may be made by a subsequent land survey of public record; that this Landmark Monument Preservation Record is true and correct to the best of my knowledge and belief.

Signature: [Handwritten Signature] Date: 8-18-99