

L 1968

MAP # L 1968
 DATE FILED... JAN. 02, 2004
 BY... *WCR*
 DESCRIPTION FILED.....
 ONEIDA CO. SURVEYOR'S OFFICE

L 1968

This form is intended to fulfill the requirements of Chapter A-E7.08 (3)(a) thru (l) U.S. Public Land Survey Monument Location Record, Wisconsin Administrative Code. Use the reverse side of form for continuation.

U.S. PUBLIC LAND SURVEY MONUMENT LOCATION RECORD

Recorders Data

USPLS CORNER: NORTH WIT MC SECTION: 4 TOWNSHIP: 38 NORTH RANGE: 11 EAST
 NAME OF WATERWAY FOR M.C. CORNER: SPIRIT LAKE SECTION LINE: WEST
~~(CITY)~~(VILLAGE)(TOWN) OF: THREE LAKES COUNTY OF: ONEIDA

Description of monument found or placed and all other evidence used as the basis for monument location; including monuments and measurements required if the corner location was reestablished by lost corner proportionate methods. Also indicate name of the original surveyor, original survey date and the corner monument, bearing trees, witness or other reference monuments established, including measured bearing and distance ties, from available survey records.

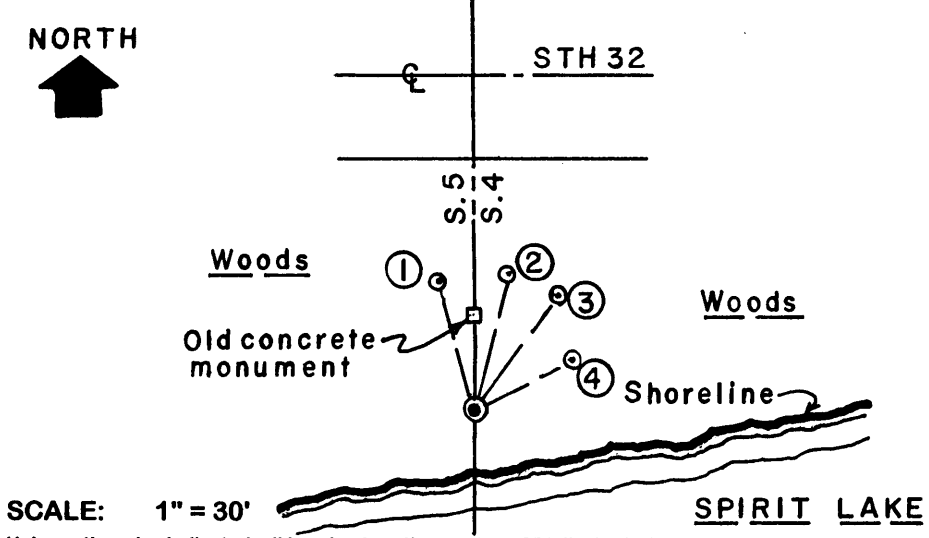
Found an old 5.5" by 6" concrete monument with uncapped top 36" up and tipped 30°+/- South, which would require extensive digging and winching to replumb for new ties, so I set a new Wit MC per approval of Oneida County Surveyor Romportl, with a standard 2" dia. by 30" long aluminum pipe monument with stamped Oneida County cap 2" up about 14' South of old concrete monument on the section line by field survey per data sketch on reverse.

In September 1859, William E. Daugherty/GLO set a wood post as original MC and noted OBTs: a 7" Bw N46°W 17 links and an 8" Bw N13°E 8 links; all are now obliterated.

William E. Bandow/RLS 1182 filed a Certified Land Corner Restoration Record on November 14, 1984 in Oneida County records; his reference to a Pr BT by Vaughan N70°W 10.5', now found as a 21" Pr with long lower face blaze scar plain, his 4" Mr BT S42°W now found as a sawed off 3" high stump and his 11" Mr East now found as a dead 50'+/- high pike with open and scribed upper and lower face blazes.

This recovery completed August 19, 2003; there were no direct witnesses.

Plan view map of monument location with bearing and distance ties to a minimum of four(4) described witness or reference monuments of concrete, natural stone, iron, live bearing trees or equivalent material. If applicable, also show a minimum of two(2) bearing and distance ties to any other monument found and not accepted; including the bearing and distance from the accepted monument.



WITNESS MONUMENT TIES:

- ① New 7" Pr BT N13°W 18.94'.
- ② New 9" Pr BT N14°E 22.20'.
- ③ New 6" Pr BT N36°E 21.55'.
- ④ New 5" Cedar BT N62°E 16.72'.

New Wit MC monument falls 10.5'+/- North of lakeshore bearing S80°W, that is bermed from previous lake wave and ice action, and is 52'+/- South of the centerline of STH 32 pavement.

Standard white poly 'T' marker post set 7" North of new Wit MC monument.

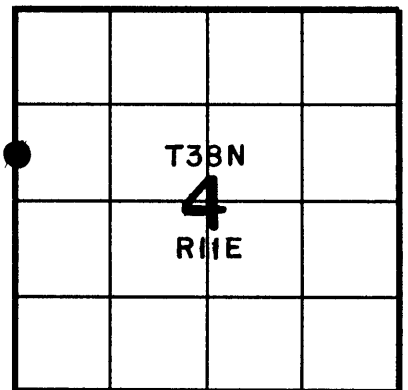
Unless otherwise indicated, all bearing tree ties are to a .25" dia. by 2.5" long PK nail with a 1.25" dia. steel washer driven into unblazed right face and a .25" dia. by 2.5" long PK nail with a 2" dia. steel washer stamped BT is also driven into unblazed face of bearing tree at DBH; the basis for measured bearings is by compass to nearest degree and all tie distances are measured horizontal by steel tape corrected to nearest 1/100th feet at standard temperature of 68° F.

RLS SEAL:

WISCONSIN
 WILLIAM C. ROHDE
 S-0841
 LARSEN
 WISCONSIN
 LAND SURVEYOR

LAND SURVEYOR CERTIFICATE:
 I, William C. Rohde, hereby certify that I am duly licensed as a Professional Land Surveyor in the State of Wisconsin; that this USPLS monument location was determined by me and/or under my direct supervision and control; and that this U.S. Public Land Survey Monument Location Record is true and correct to the best of my knowledge and belief.

Signed: *William C. Rohde*
 William C. Rohde RLS 841



SHEET 1 OF 1
FORM REVISED: 03/15/03

Date Signed: December 1, 2003

SECTION LOCATION MAP
 INDEX NO. **BC 9**
3811052200

L 1968

L 1968

