

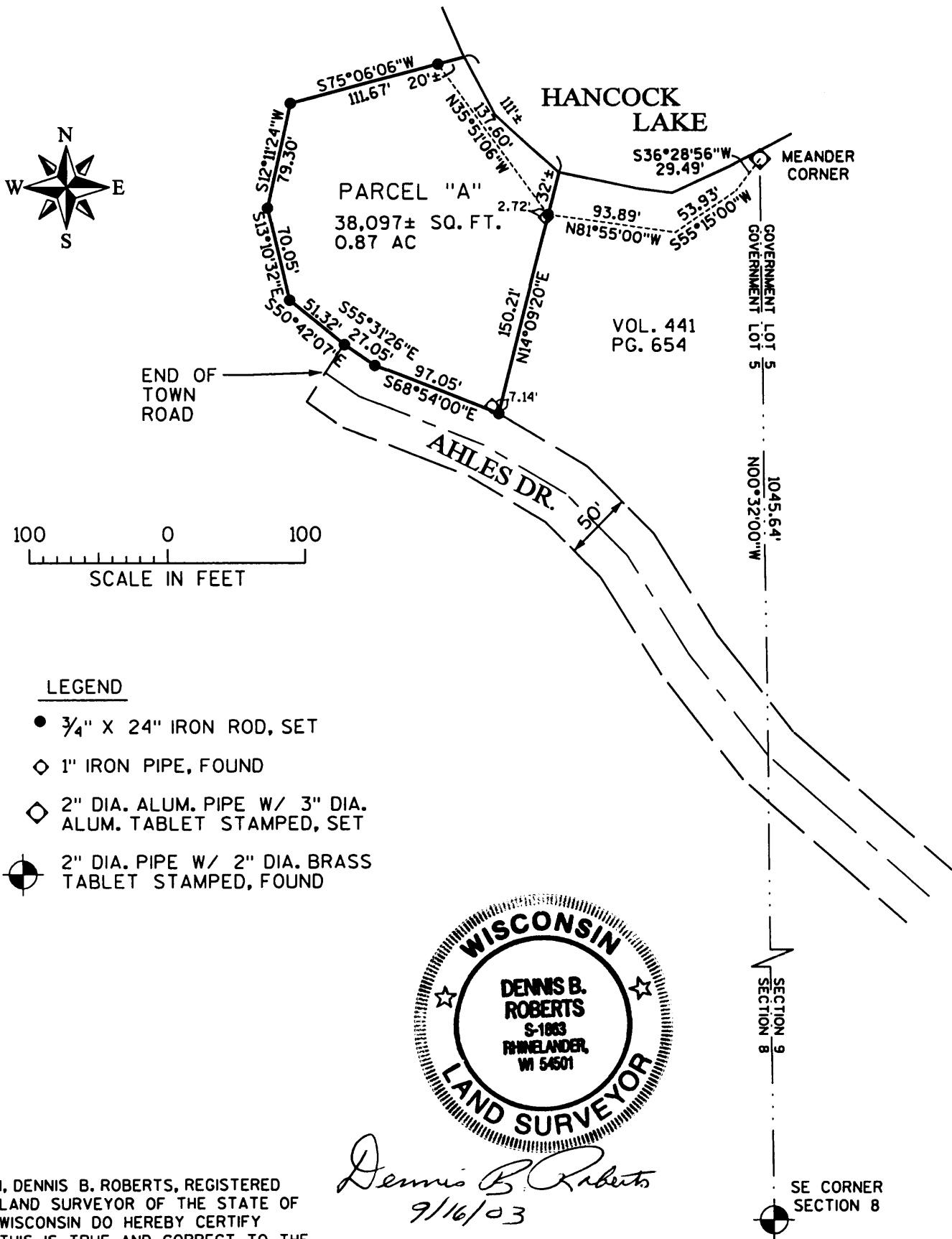
MAP # **L1999**
 DATE FILED.....5-13-04
 BY.....
 DESCRIPTION FILED *Use Desc Filed*

L1999

PROJECT #980478	SCALE: 1"=100'	FILE #980478	980478
FIELD BOOK #96	DRAWN BY: CAR	ONEIDA CO. SURVEYOR'S OFFICE	SHEET # 1 OF 2
PAGES *	CHECKED BY: ECU		SIDE # 1 OF 1
SURVEYOR: DENNIS B. ROBERTS MSA PROFESSIONAL SERVICES, INC. 1835 NORTH STEVENS STREET RHINELANDER, WI 54501 (715) 362-3244	MSA PROFESSIONAL SERVICES 1835 N. Stevens St. Rhineland, WI 54501 715-362-3244 1-800-844-7854 Fax: 715-362-4116 © MSA PROFESSIONAL SERVICES	CLIENT: MICHAEL AHLES	

PLAT OF SURVEY

LANDS BEING PART OF GOVERNMENT LOT 5, LOCATED IN
 SECTION 8, T36N, R7E, TOWN OF WOODBORO,
 ONEIDA COUNTY, WISCONSIN



L1999

L1999

L1999