

L2058

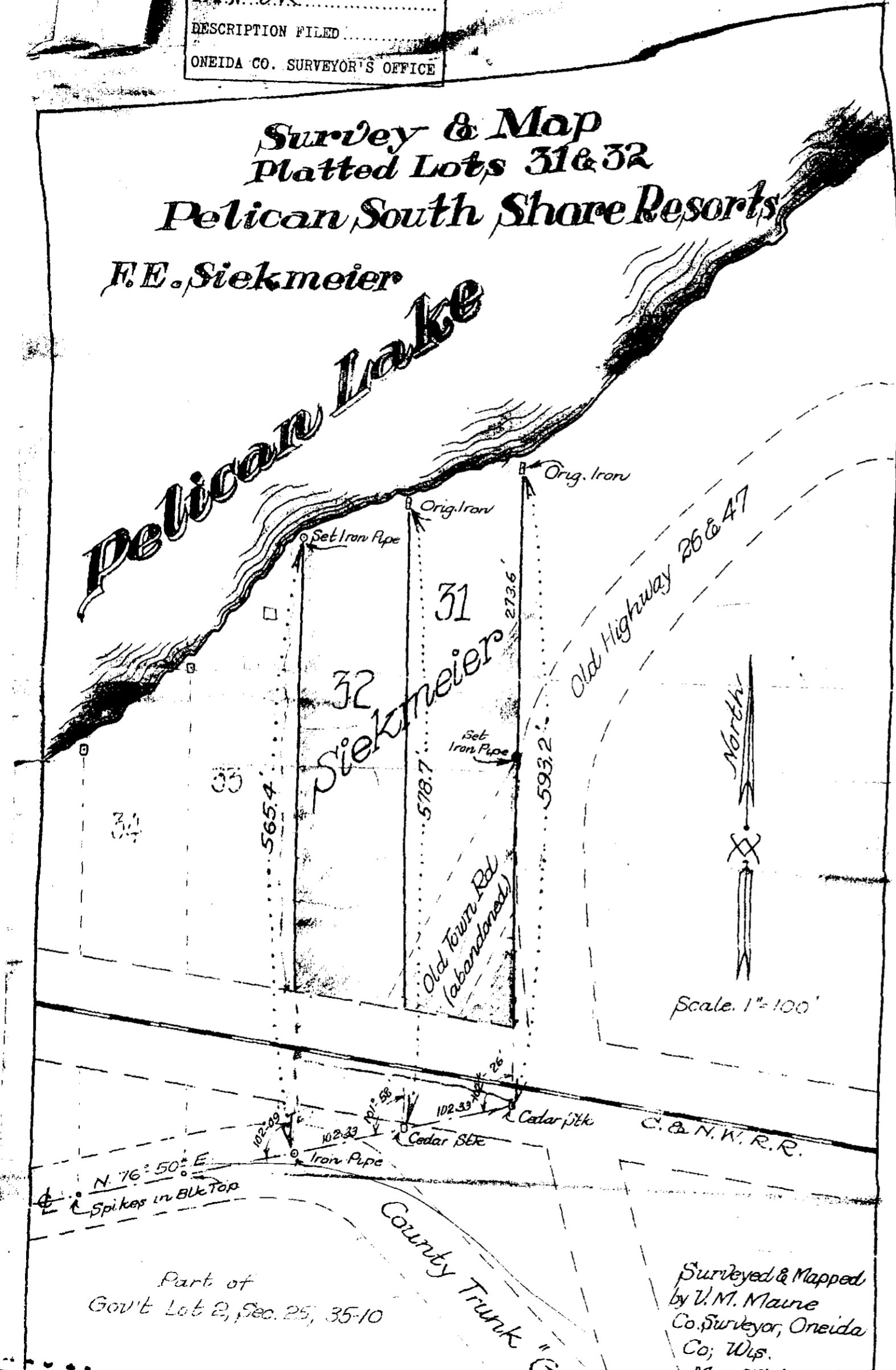
MAP # L2058  
 DATE FILED SEP 23 2004  
 BY: MBK  
 DESCRIPTION FILED  
 ONEIDA CO. SURVEYOR'S OFFICE

L2058

**Survey & Map**  
**Platted Lots 31 & 32**  
**Pelican South Shore Resorts**

F. E. Siekmeier

*Pelican Lake*



Scale 1" = 100'

Surveyed & Mapped  
 by U.M. Maine  
 Co. Surveyor, Oneida  
 Co., Wis.  
 May 31st, June 1st  
 1917

L2058

L2058