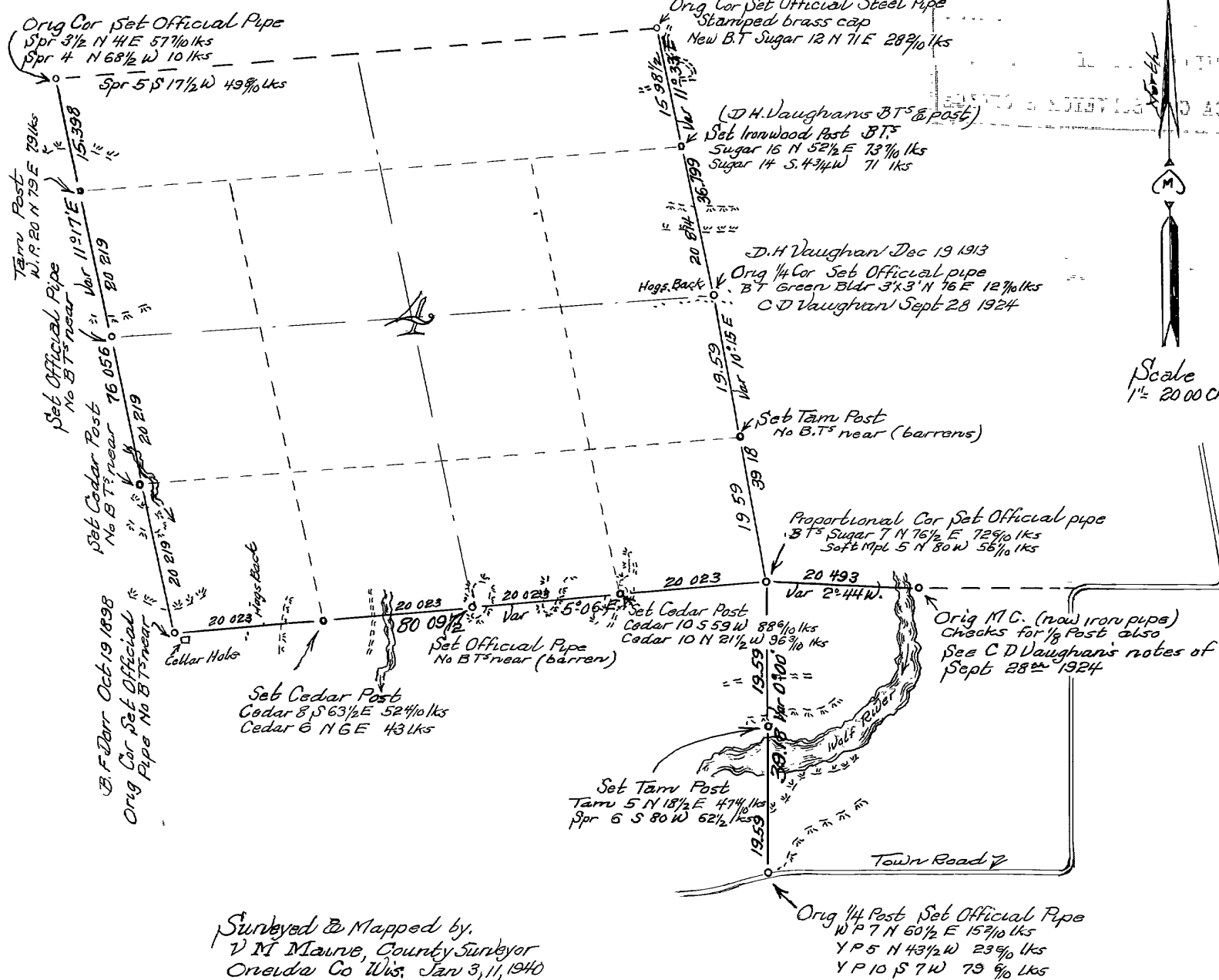


*Survey of Section 4 Twp 35N. R 11E.
Oneida Co. Wis.
For Oneida Co., Forestry Committee*

WOODS & SON
MAY 1940



Scale 1" = 2000 Chs

*Surveyed & Mapped by,
V.M. Maurice, County Surveyor
Oneida Co Wis. Jan 3, 11, 1940*