

1497
Sec. ~~36~~ 31 Twp. ~~36~~ 35 Range ~~3 E~~ 4 E

68127

1 6

35 35

North

R 3 E

R 4 E

Price	36	31 Oneida	County
Twp 36		Twp 36	
Twp 35		Twp 35	
County		6 Lincoln	County

RECEIVED & FILED
 Price County Surveyor's Office
 Date 30 Nov 79
 By *[Signature]*
 PCS File No. 11499

NW Cor 6 - 35 - 4

6/9/66

To locate the SouthWest corner of Oneida County and the NorthWest corner of Lincoln County on the East line of Price County, I establish the same at the intersection of the Township line between Townships 35 & 36 Range 4 East and the Range line between Range 3 & 4 East of the 4th Principal Meridian.

I drove an iron pipe 1 inch X 24 inches, to the level of the Blacktop of the Road surface and mark the following B.T.s.

Am. Elm 38, N 70° W, 40 feet,

" " 8, S 55° W, 48 "

" " 12, S 68° E, 70 "

Magnetic bearings,

Surveyed by

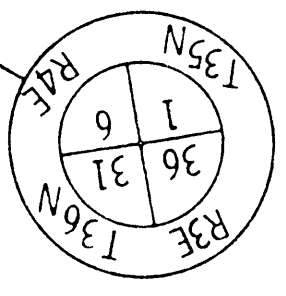
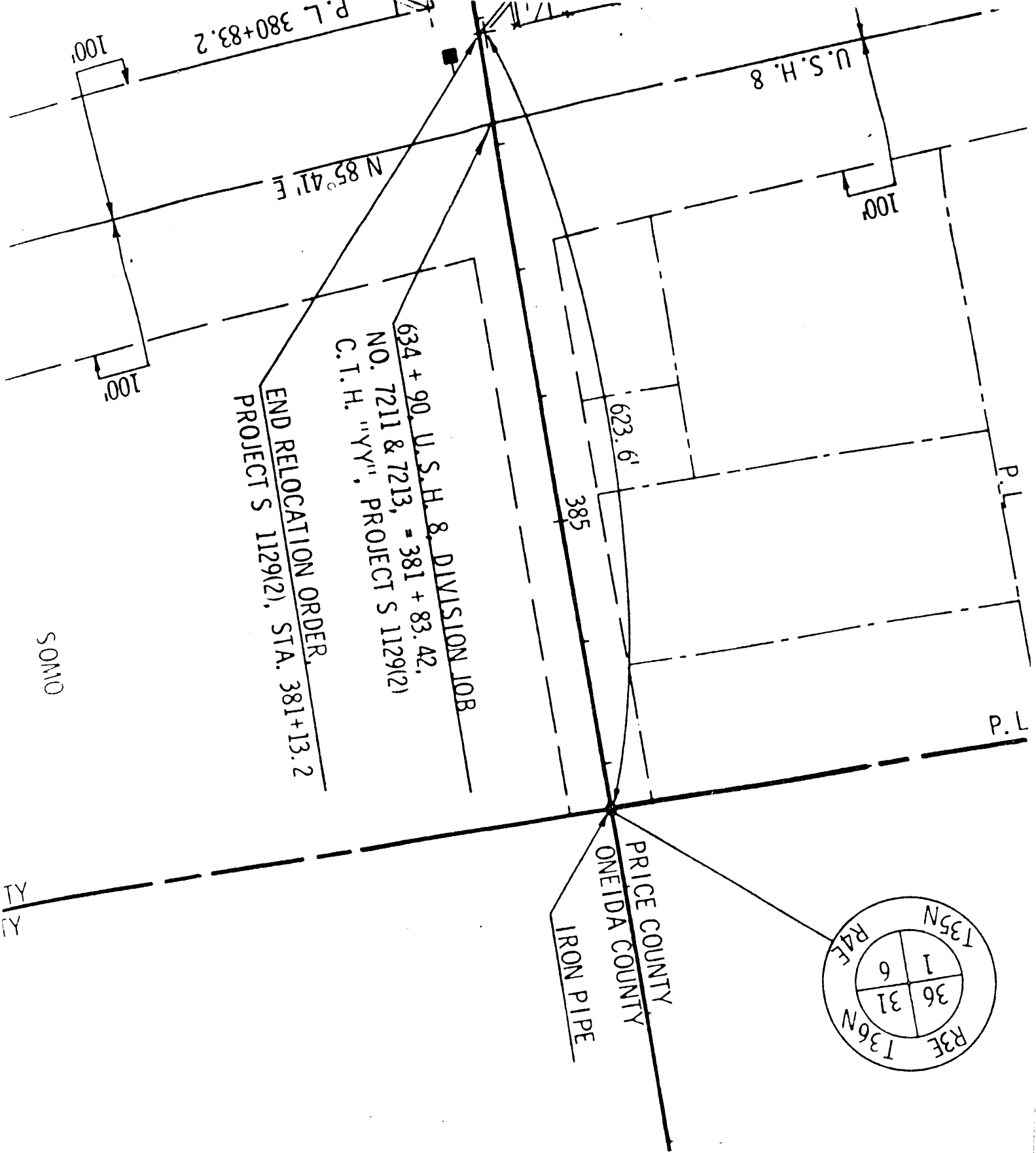
Leonard Risberg

Registered Wisconsin Land Surveyor.

MAP # L2139
 DATE FILED AUG 08 2005
 BY *[Signature]*
 ONEIDA CO. SURVEYOR'S OFFICE

L2139

L2139



I.E.	0.18
	0.81
	0.38
	0.22
	0.71
	1.22
= RIGHTS	

REQUIRED	
S	ACRES
	2.88
	1.58
	1.51
	0.88
	0.82
	0.92
	1.09
	0.99
	0.92
	0.98

72139