

U.S. PUBLIC LAND SURVEY MONUMENT RECORD

Note: This form is intended and designed to fulfill all requirements of Wisconsin Administrative Code, Chapter A-E 5.02, U.S. Public Land Survey Monument Record (3) (a) (b) (c) (d) (e) (f) (g) (h) (i). An additional sheet may be added if necessary to conform with said requirements.

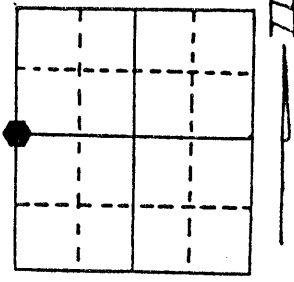
(a) Corner location: Township 35 North

Range 4 East

w/4

Town/City/Village Somo

County Lincoln



Section 6

(b) (f) (g) (h) Description of monument found at this corner and if it was accepted, state all evidence (material, testimonial, occupational, plats, records, other monuments) used as a basis for accepting. If not accepted or if nothing was found, state evidence used as basis for establishing location. If reestablished through lost corner proportionate methods, indicate all monuments, distances and directions used to establish.

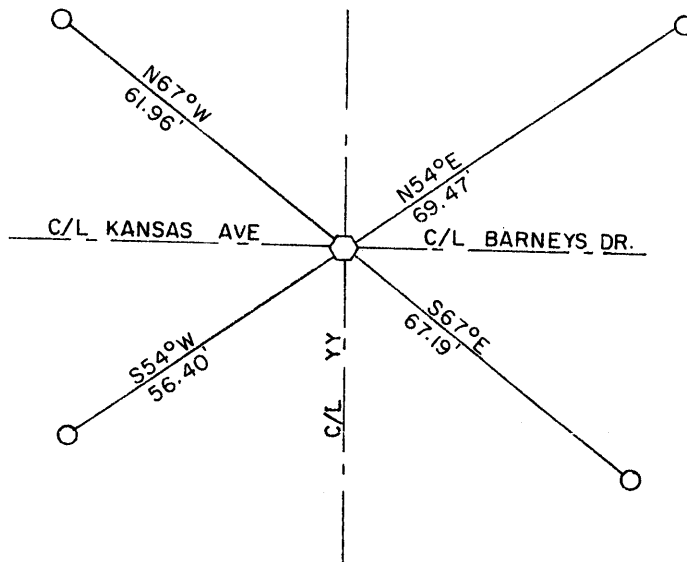
1804 - GOV'T SURVEYOR SET 1/4 SECTION POST AND MADE THE FOLLOWING B.T.'s: HEMLOCK 10" S15°E 17 LINKS; HEMLOCK 18" S68°W 26 LINKS.

1923 - BURNETT FOUND WOODEN STAKE IN HIGHWAY AND STUMP OF ORIGINAL GOV'T B.T.; HEMLOCK 18" S68°W 26 LINKS

1996 - WILLIAM E. BANDOW SET L.C.M. AND WITNESSED AS SHOWN BELOW

RECEIVED AT LINCOLN COUNTY
COURTHOUSE THIS 10th DAY
OF Sept. 1996
Pat Prober
TAX DESCRIPTION OFFICE

(c) (d) (e) Plan view of corner with ties to at least 4 witness monuments. If in disagreement with previously established corner, show the distances between the two corners and also indicate the ties to the disputed corner.



NOTE: BEARINGS TAKEN WITH A HANDHELD MAGNETIC COMPASS. NO SCALE. SET CARSTENITE POST 43' NE. CORNER IS C/L YY & C/L BARNEYS DR. SEE BACK SIDE OF THIS SHEET.

LEGEND

- SET 3/4" IRON ROD
- ◻ SET 3/4" CAPPED IRON ROD

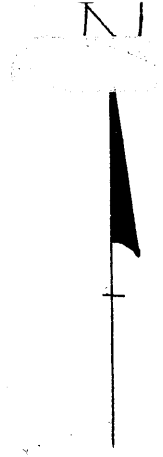
(i) I, William E. Bandow
(type or print name) certify that the corner location on this record was determined by me or under my direction and control and that this U.S. Public Land Survey Monument Record is correct and complete to the best of my knowledge and belief.

William E. Bandow 9-1-96
Signature Date



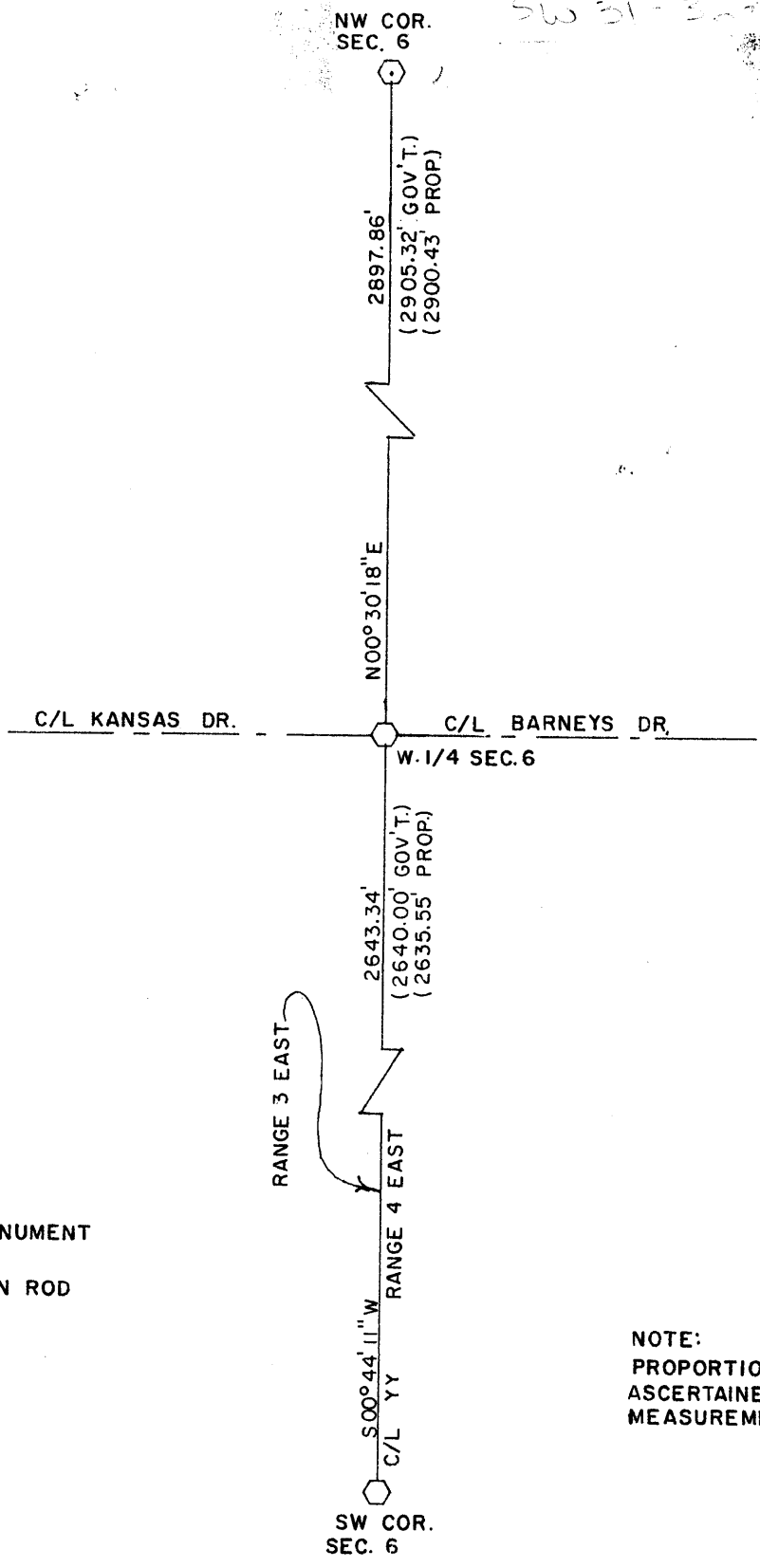
Index No. C-1

L2140



MAP # **L2140**
 DATE FILED **AUG 08 2005**
 BY **JC**
 DESCRIPTION FILED
 ONEIDA CO. SURVEYOR'S OFFICE

SW 31-30-12



- LEGEND
- ⊙ FOUND ALUMINUM MONUMENT
 - ⊙ SET 3/4" CAPPED IRON ROD

NOTE:
 PROPORTIONATE MEASUREMENT WAS
 ASCERTAINED FROM WEST LINE
 MEASUREMENT OF SOMO TOWNSHIP.

L2

L2140