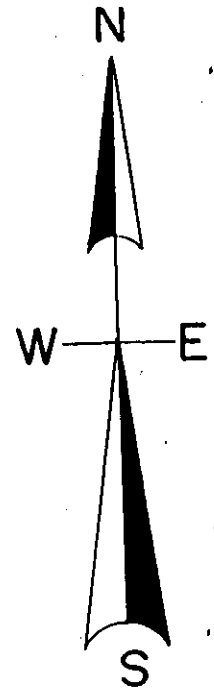


**LOTS 30 & 31 OF THE ASSESSOR'S PLAT LOCATED IN
GOV'T. LOTS 1 & 2, SEC. 8, T. 36 N., R. 9 E., ONEIDA
COUNTY, WI.**

ACCORDING TO THE RECORDED PLAT.

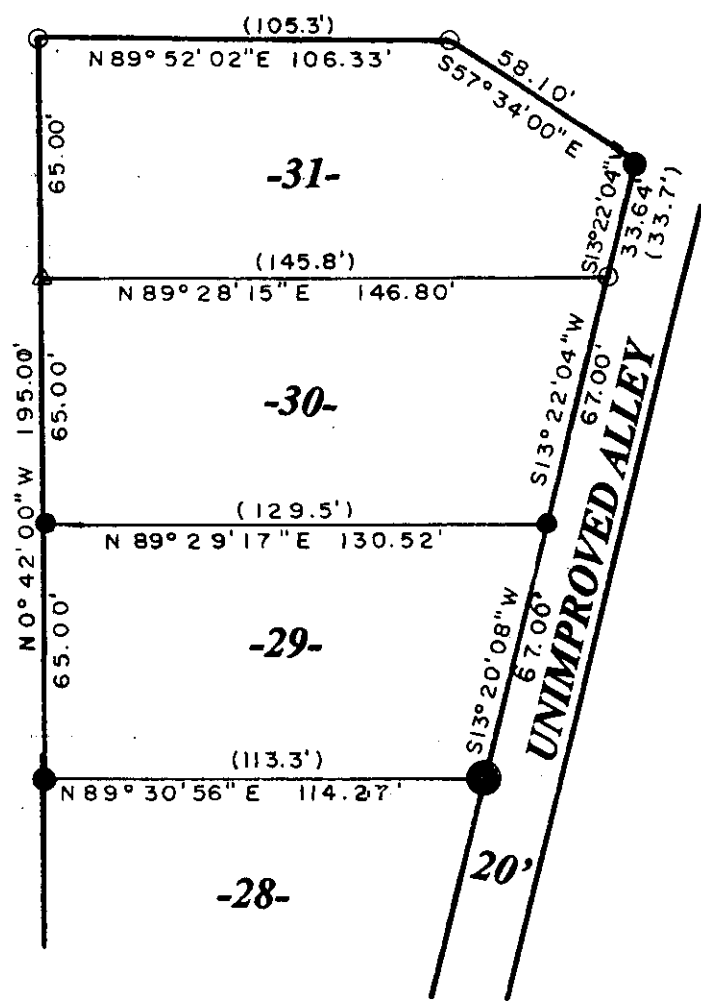
MAP #	L 2150
DATE FILED	AUG 24 2005
BY	JC
DESCRIPTION FILED	
ONEIDA CO. SURVEYOR'S OFFICE	



JOHN STREET

BACON STREET

UNIMPROVED ALLEY



LEGEND

- SET 1" IRON PIPE
- △ SET MAG. NAIL
- FOUND 1" IRON PIPE
- FOUND 1.25" IRON PIPE
- FOUND 1.5" IRON PIPE
- (DIST. OF RECORD)

SCALE

1" = 50'

