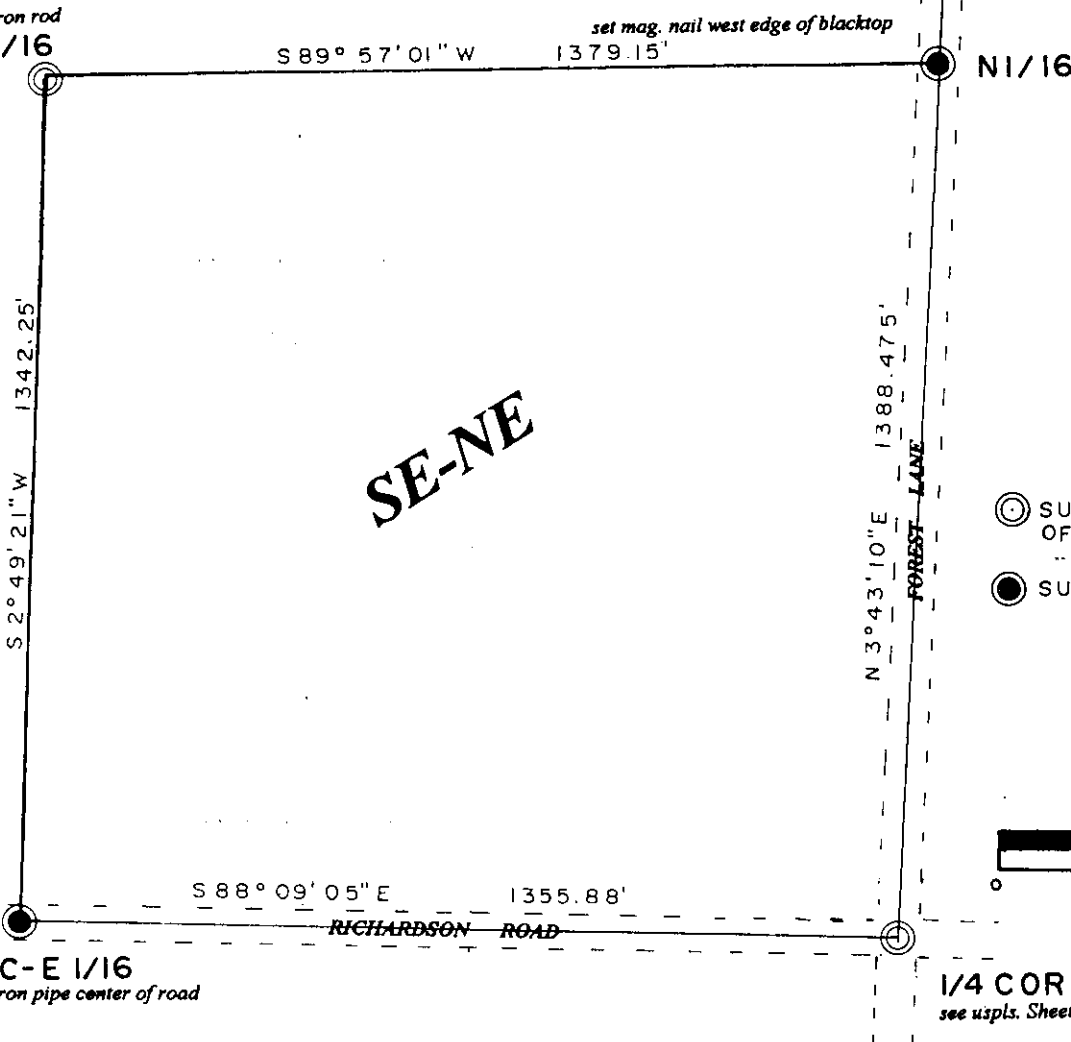


SURVEY OF THE SE 1/4 OF THE NE 1/4, SEC. 27, T. 37 N., R. 8 E., TOWN OF NEWBOLD, ONEIDA COUNTY, WI.

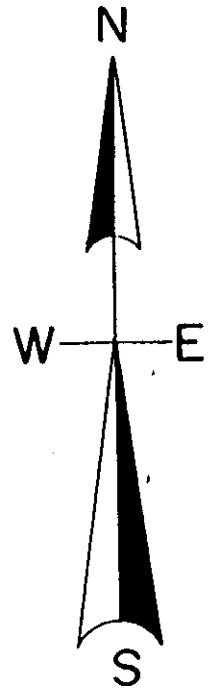
L2151

MAP # **L2151**
 DATE FILED **AUG 24 2005**
 BY *Jc* **SURVEY FOR PHIL MCCOY**
 DESCRIPTION FILED
 ONEIDA CO. SURVEYOR'S OFFICE



Found iron rod
 NE 1/16



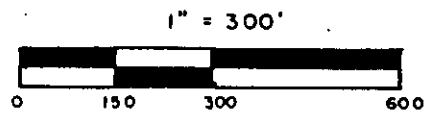
SEC. COR.
 see uspls. Sheets



LEGEND

-  SUBDIVISIONAL MON. OF RECORD
-  SUBDIVISIONAL MON. SET

SCALE



1/4 COR.
 see uspls. Sheets

**SURVEY IS BASED ON ONEIDA COUNTY
 COORDINATE GRID SYSTEM.**

North is referenced to the east line
 NE 1/4 being a Oneida County
 Coordinate grid bearing of:
 N 3° 43' 10" E.