

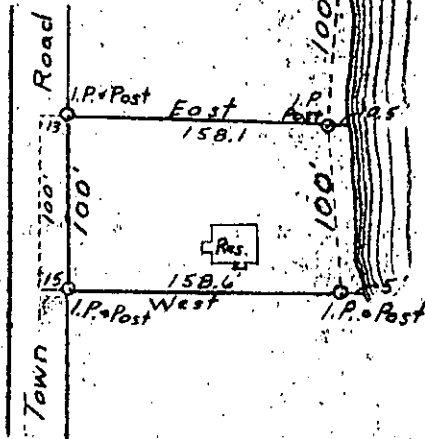
North Line of Gov't Lot 5

Assumed East + West

M.C. I.P.

North

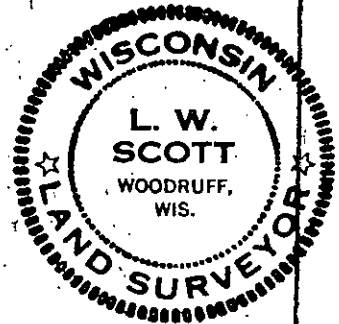
Scale = 1 inch = 100 feet



PART of  
**GOV'T LOT 5**  
 Section 19, T39N-R7E  
 Oneida County, Wis.

July 3, 1959

*L. W. Scott*  
 Surveyor



5-A-34

5-A-34

ONEIDA CO. SURVEYOR'S OFFICE  
 DESCRIPTION FILED  
 BY *JK*  
 DATE FILED SEP 29 2005  
 MAP # **L2167**

L2167