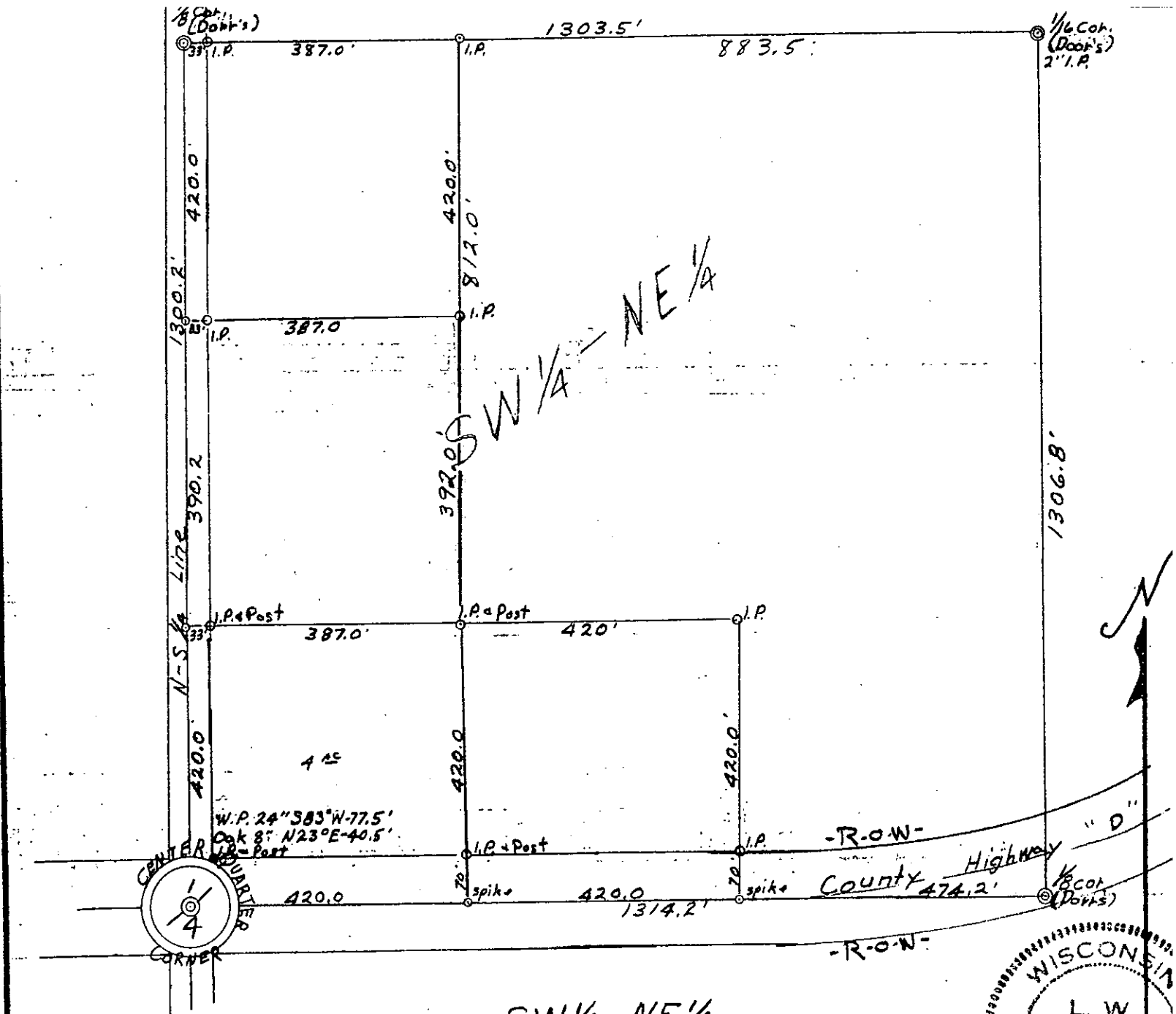


L2169

MAP # **L2169**
 DATE FILED **SEP 29 2005**
 BY **SC**
 DESCRIPTION FILED
 ONEIDA CO. SURVEYOR'S OFFICE



SW 1/4 - NE 1/4
 Sec. 10 - T38N - R7E
 Oneida County, Wis.
Lloyd Scott
 Surveyor 3-584

