

1303.5 (Darts)

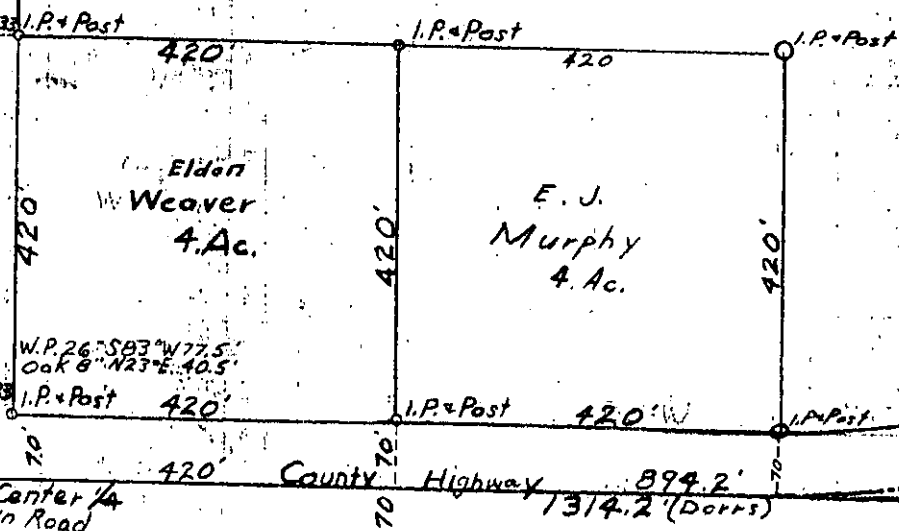
1/8 Cor.

1/16 Cor.

1300.2 (Darts)
Road
880.2
TOWN

1308 (Darts)

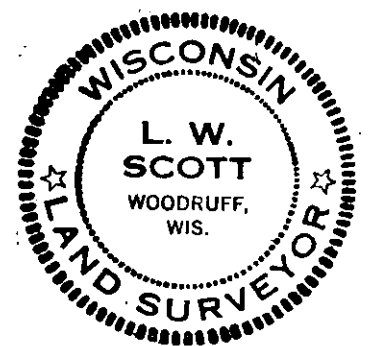
SW 1/4 - NE 1/4
34 Ac.



W.P. 26° S 83° W 77.5'
Oak 8" N 23° E 40.5'

April 8, 1959
Revised
Dec. 28, 1960

SW 1/4 - NE 1/4
Sec. 10 - T38N - R7E
ONEIDA COUNTY
WIS.
Lloyd W. Scott
Surveyor



MAP # **L2171**
 DATE FILED **SEP. 29. 2005**
 BY **JC**
 DESCRIPTION FILED
 ONEIDA CO. SURVEYOR'S OFFICE

L2171

5-A-77