

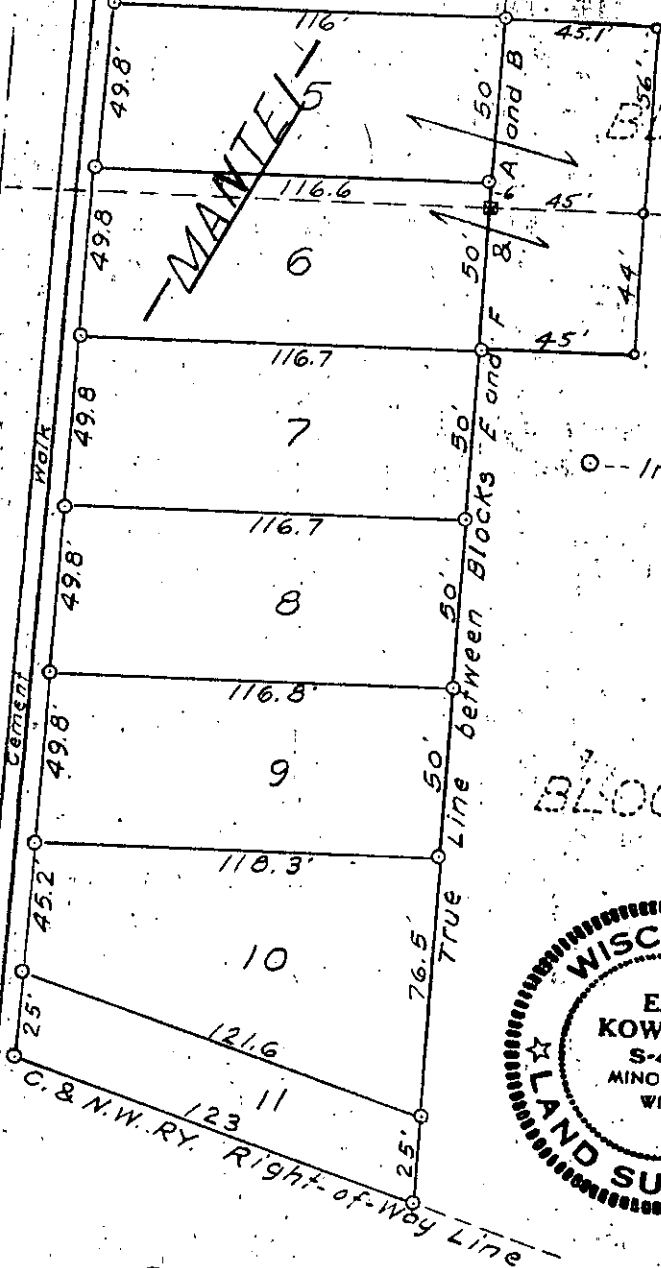
BLOCK D

BLOCK A

BLOCK E

BLOCK F

Center Line of U.S. Highway 51



○ -- Iron stakes



PART OF  
 HELEN BRODOCKS REPLAT  
 OF  
 BLOCKS "B" AND "E"  
 IN  
 VILLAGE OF WOODRUFF  
 ONEIDA COUNTY, WIS.

— Revised —  
 Aug. 30, 1961

5-A-15

5-A-15

August 1950

E. F. Kowalke Surveyor

MAP # **12189**  
 DATE FILED.....  
 BY *JC*.....  
 DESCRIPTION FILED.....  
 ONEIDA CO. SURVEYOR'S OFFICE

12189