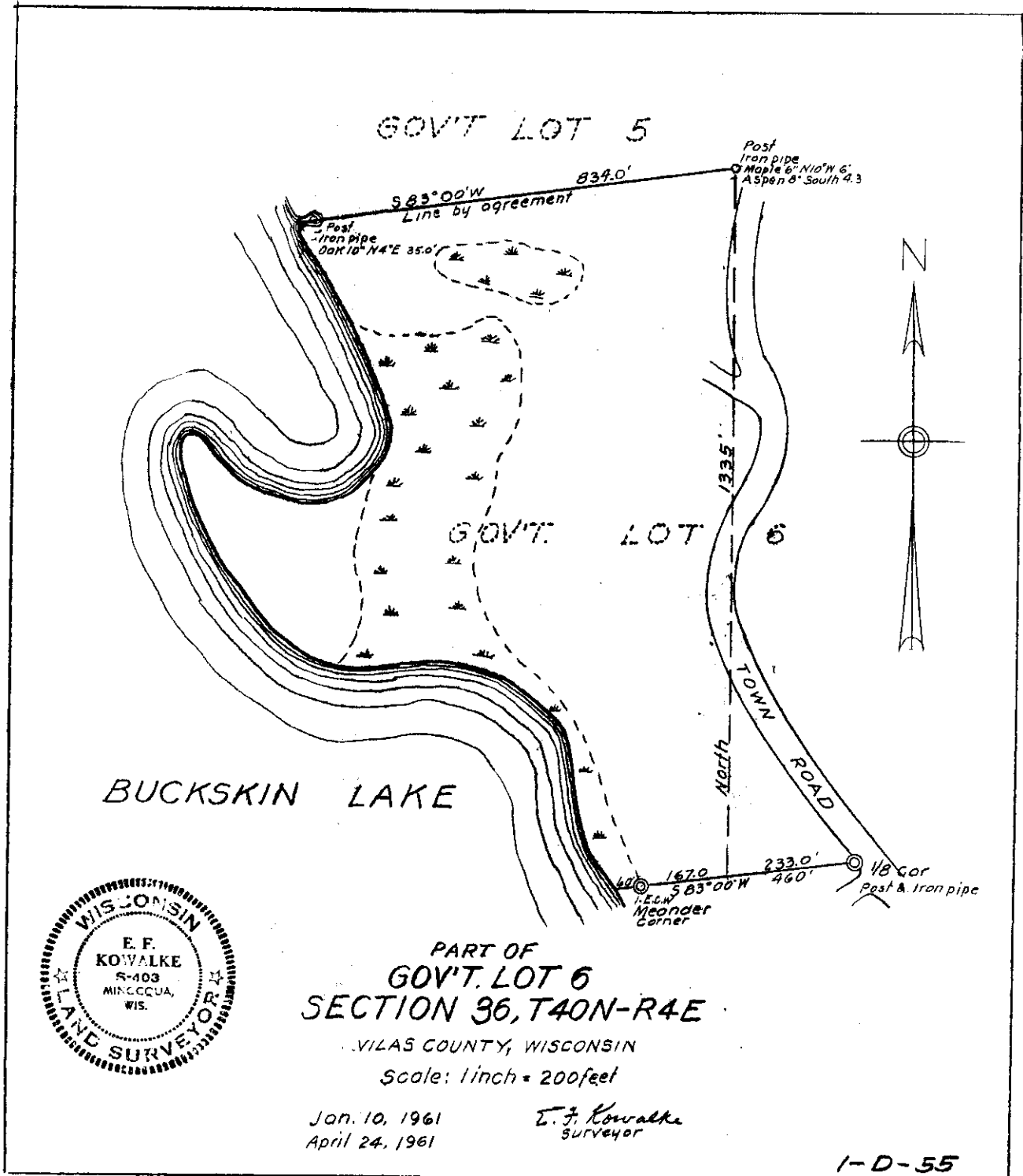


L22207



PART OF
GOV'T. LOT 6
SECTION 36, T40N-R4E

VILAS COUNTY, WISCONSIN

Scale: 1 inch = 200 feet

Jan. 10, 1961
April 24, 1961

E. F. Kowalke
Surveyor

1-D-55

MAP #	L22207
DATE FILED	NOV. 01. 2005
BY	<i>[Signature]</i>
DESCRIPTION FILED
ONEIDA CO. SURVEYOR'S OFFICE