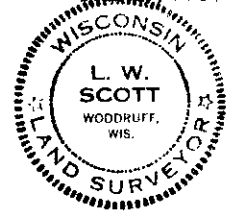


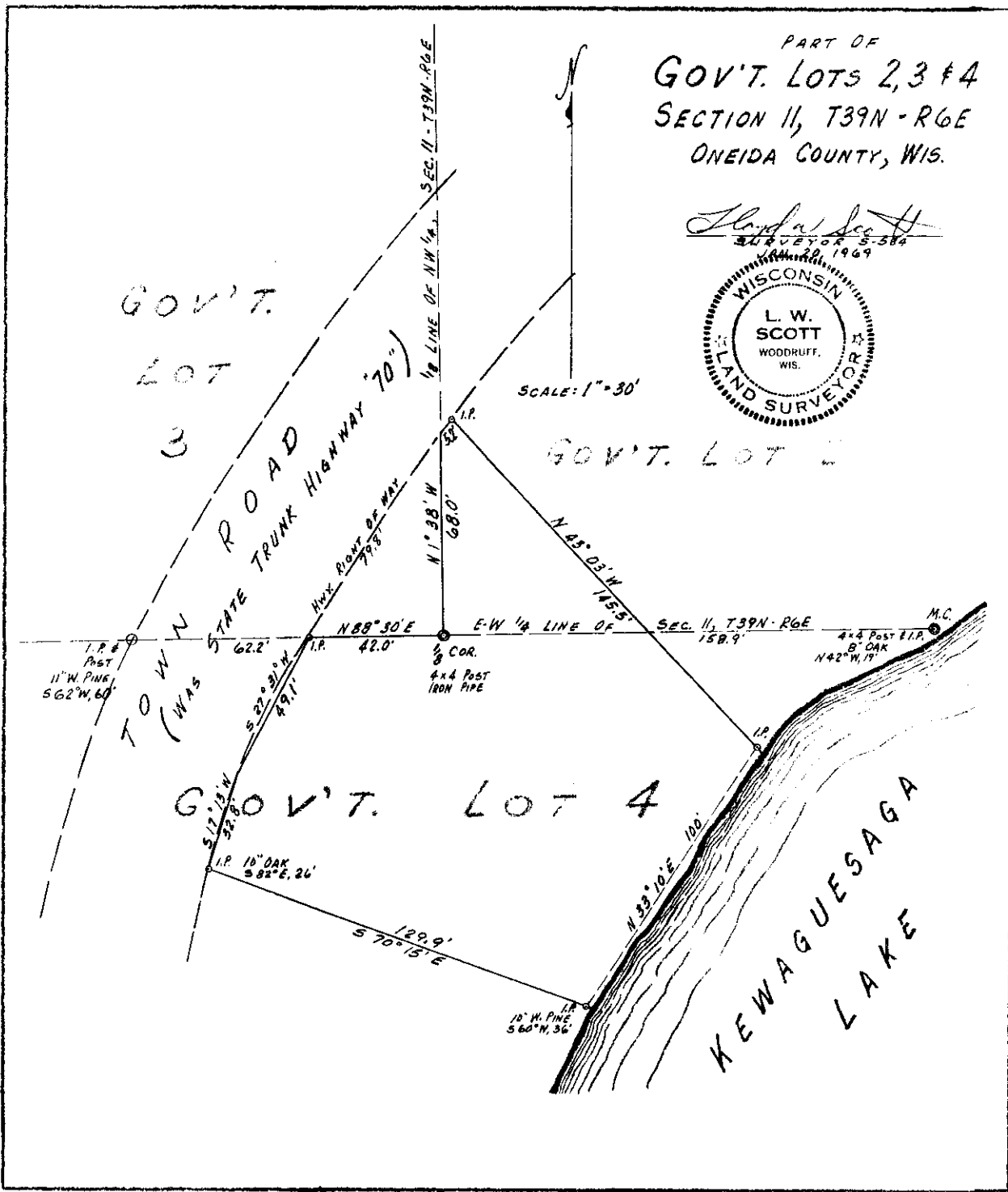
12208

PART OF  
GOV'T. LOTS 2, 3 & 4  
SECTION 11, T39N-R6E  
ONEIDA COUNTY, WIS.

*Lloyd A. Scott*  
SURVEYOR S-384  
MAY 20, 1969



SCALE: 1" = 30'



GOV'T.  
LOT  
3

GOV'T. LOT 2

GOV'T. LOT 4

KEWAGESAGA  
LAKE

MAP # 12208  
DATE FILED NOV 01 2005  
BY *LS*  
DESCRIPTION FILED  
ONEIDA CO. SURVEYOR'S OFFICE

1-D-81