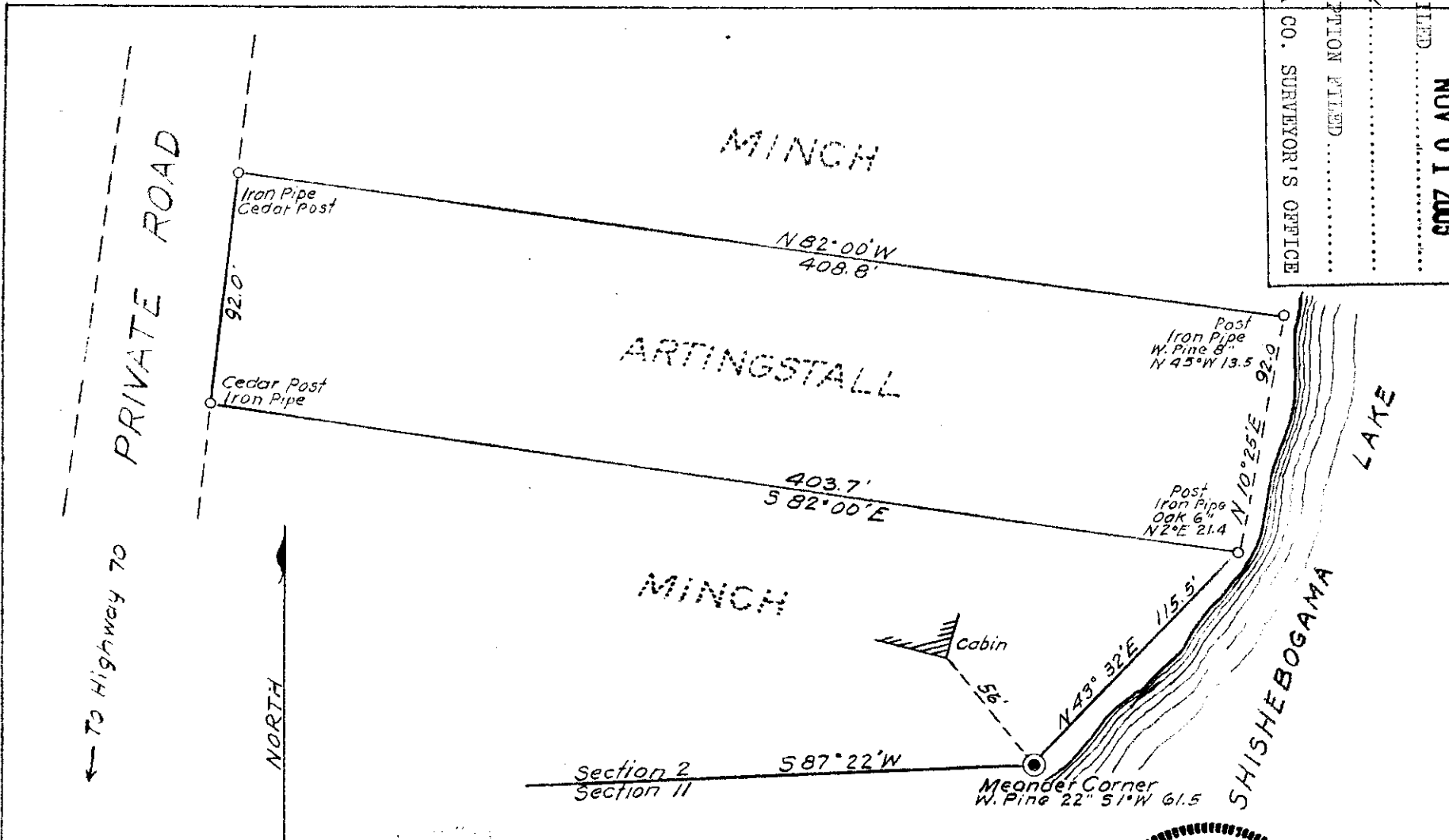


MAP # **L 2217**
 DATE FILED **NOV 01 2005**
 BY *W*
 DESCRIPTION FILED
 ONEIDA CO. SURVEYOR'S OFFICE



PART OF
GOV'T LOT 3
SECTION 2, T39N, R5E
 ONEIDA COUNTY, WIS.

June 21, 1956

E. F. Kowalke
Surveyor



1-A-19

L 2217