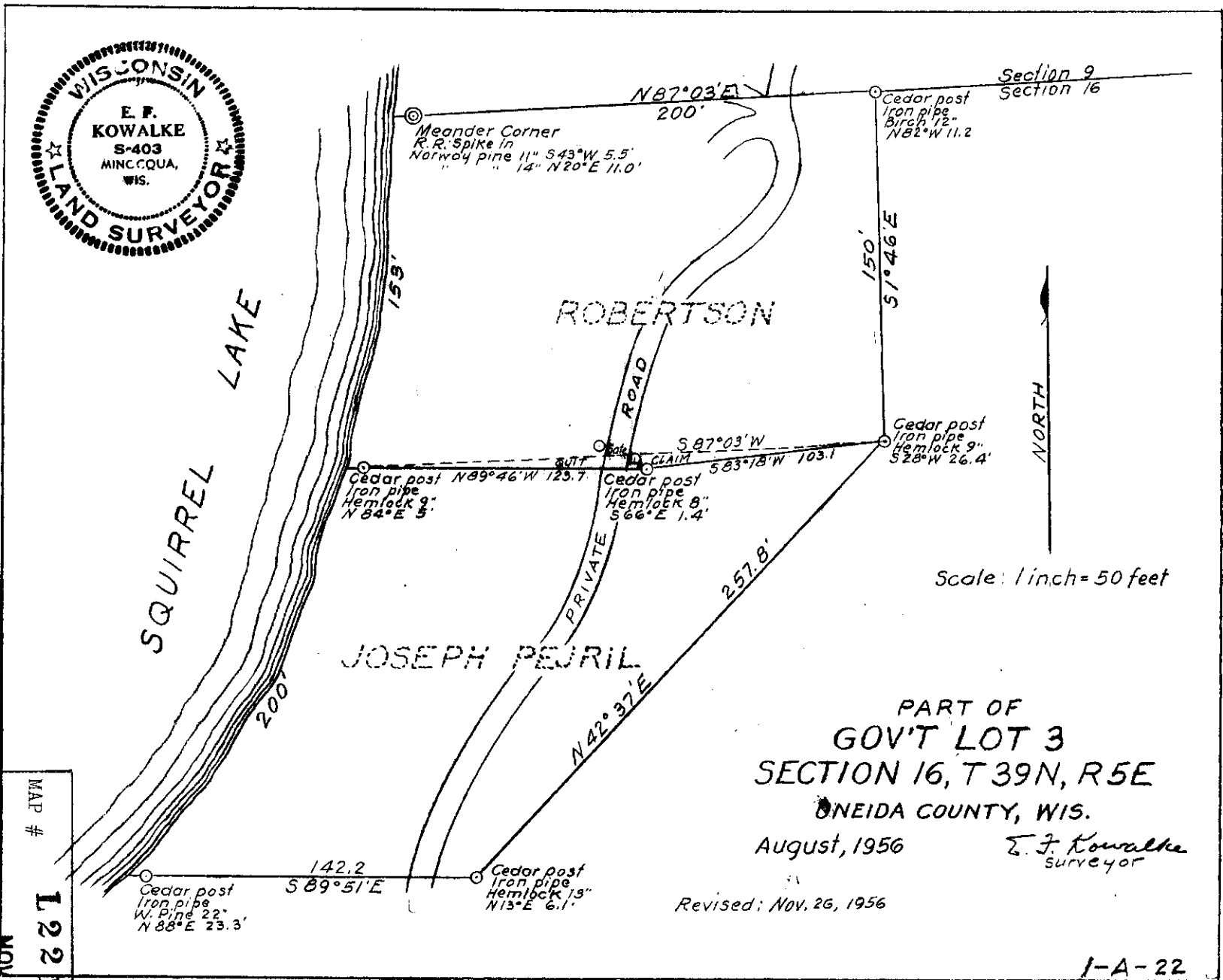


L2218

4

L2218



PART OF
 GOV'T LOT 3
 SECTION 16, T 39N, R 5E
 ONEIDA COUNTY, WIS.

August, 1956
 E. F. Kowalke
 surveyor
 Revised: Nov. 26, 1956

1-A-22

MAP # **L2218**
 DATE FILED... **NOV 01 2005**
 BY... *AK*
 DESCRIPTION FILED...
 ONEIDA CO. SURVEYOR'S OFFICE

L2218