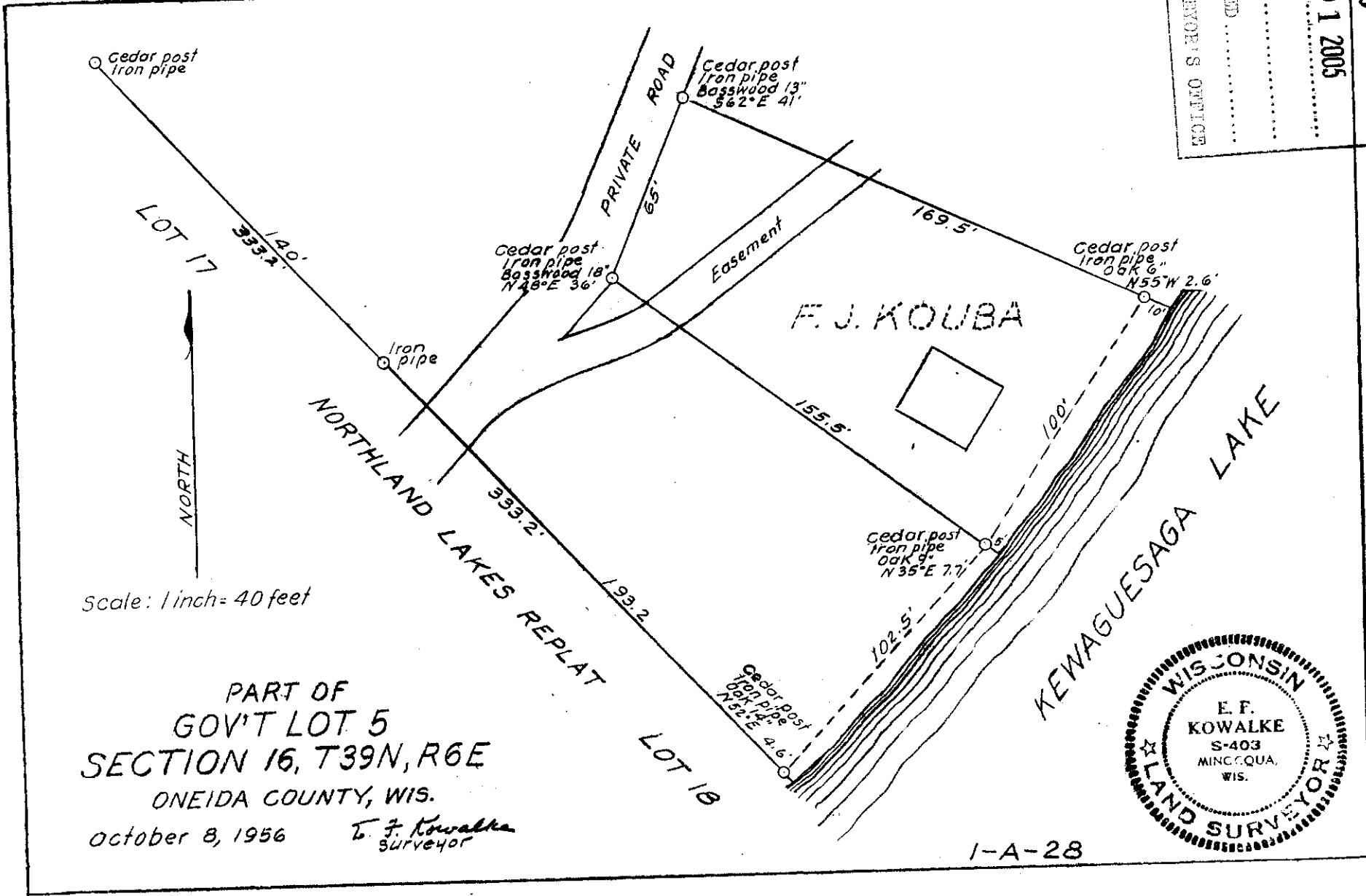
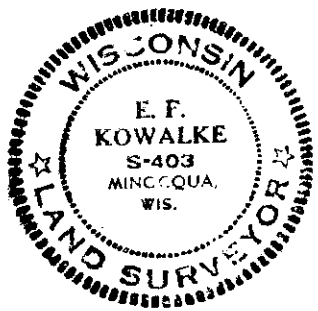


MAP # **L 2220**
 DATE FILED **NOV 01 2005**
 BY *W*
 DESCRIPTION FILED
 ONEIDA CO. SURVEYOR'S OFFICE



Scale: 1 inch = 40 feet

PART OF
 GOV'T LOT 5
 SECTION 16, T39N, R6E
 ONEIDA COUNTY, WIS.
 October 8, 1956 *E. F. Kowalke*
 Surveyor



1-A-28

L 2220

L 2220