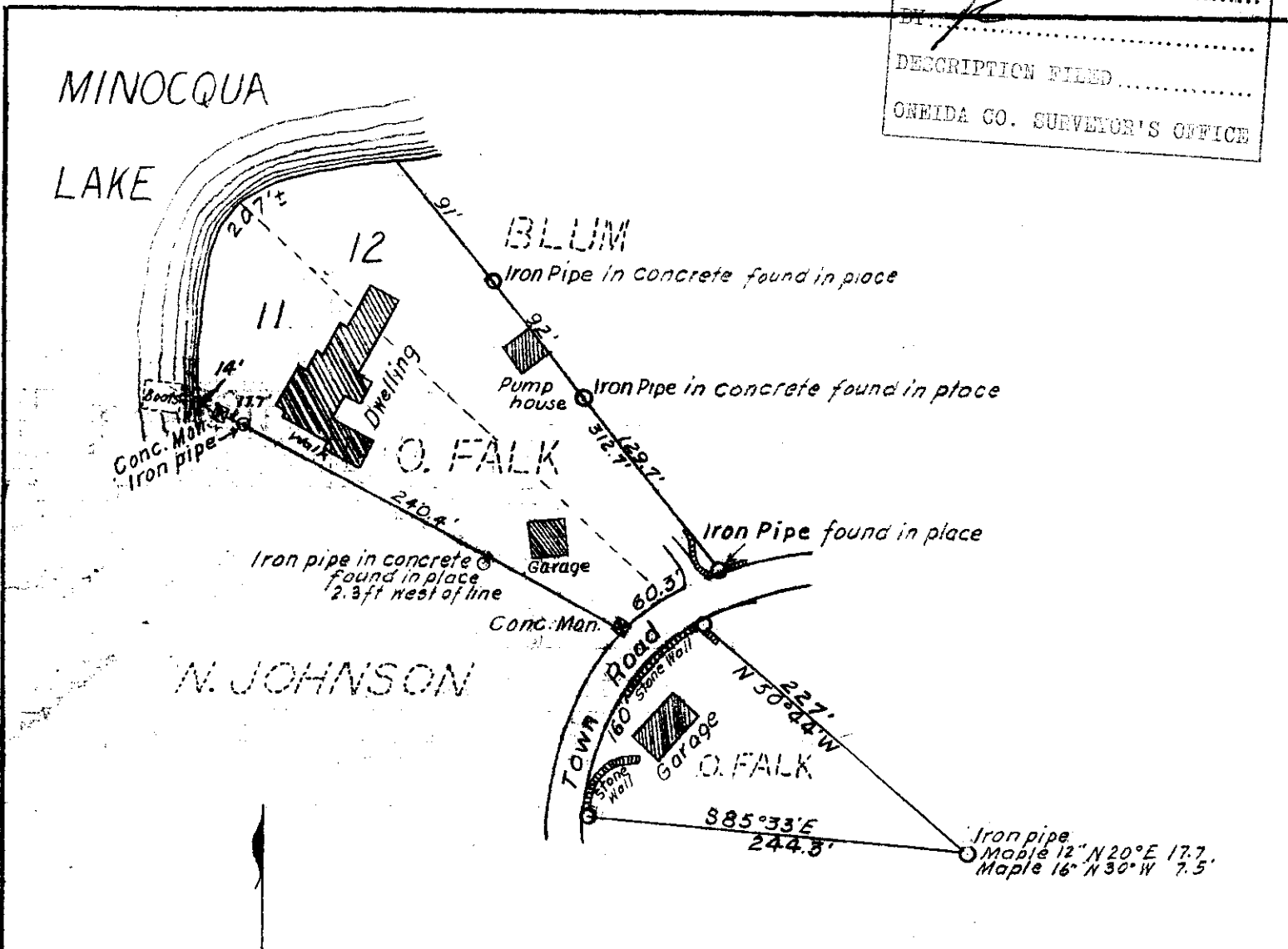


L2221

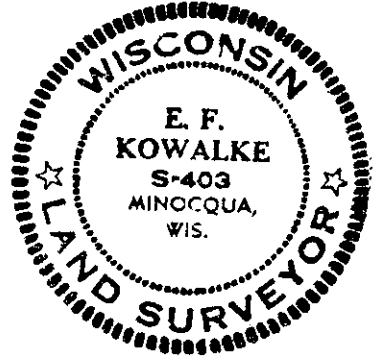
MAP # L2221
DATE FILED NOV 01 2005

DESCRIPTION FILED
ONEIDA CO. SURVEYOR'S OFFICE



N. JOHNSON

LOTS 11 and 12
of
HOWARDS POINT PLAT
and
ADJACENT LANDS
ONEIDA COUNTY, WISCONSIN



SCALE 1 INCH = 100 FEET

JUNE, 1957
E. F. Kowalke
SURVEYOR

1-A-38

L2221

L2221

GL 3,4

13-39-6