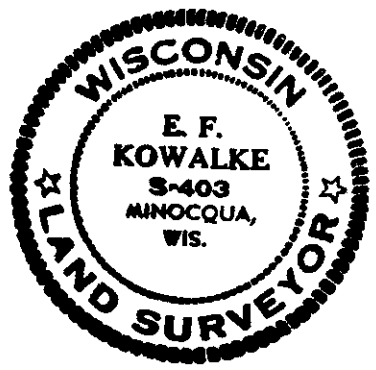
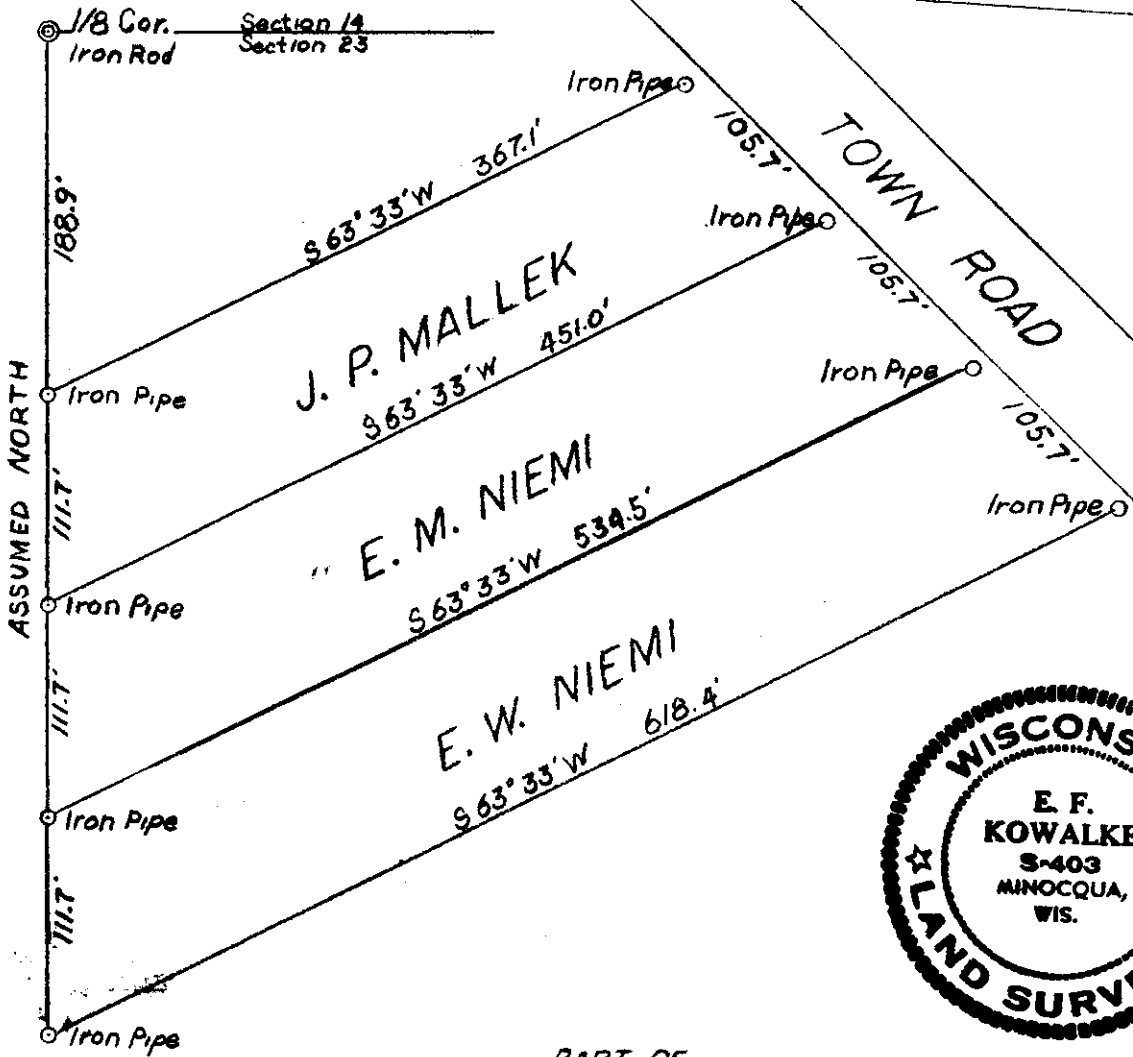


MAP # **L 2222**  
 DATE FILED... **NOV. 01. 2005**...  
 BY... *JK*...  
 DESCRIPTION FILED...  
 ONEIDA CO. SURVEYOR'S OFFICE



PART OF  
 NE 1/4 - NE 1/4  
 SEC. 23 T39N-R6E  
 ONEIDA COUNTY, WIS  
 SCALE 1 Inch = 100 Feet      JULY 1957

*E. F. Kowalke*  
 SURVEYOR

