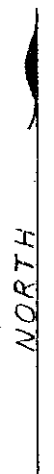
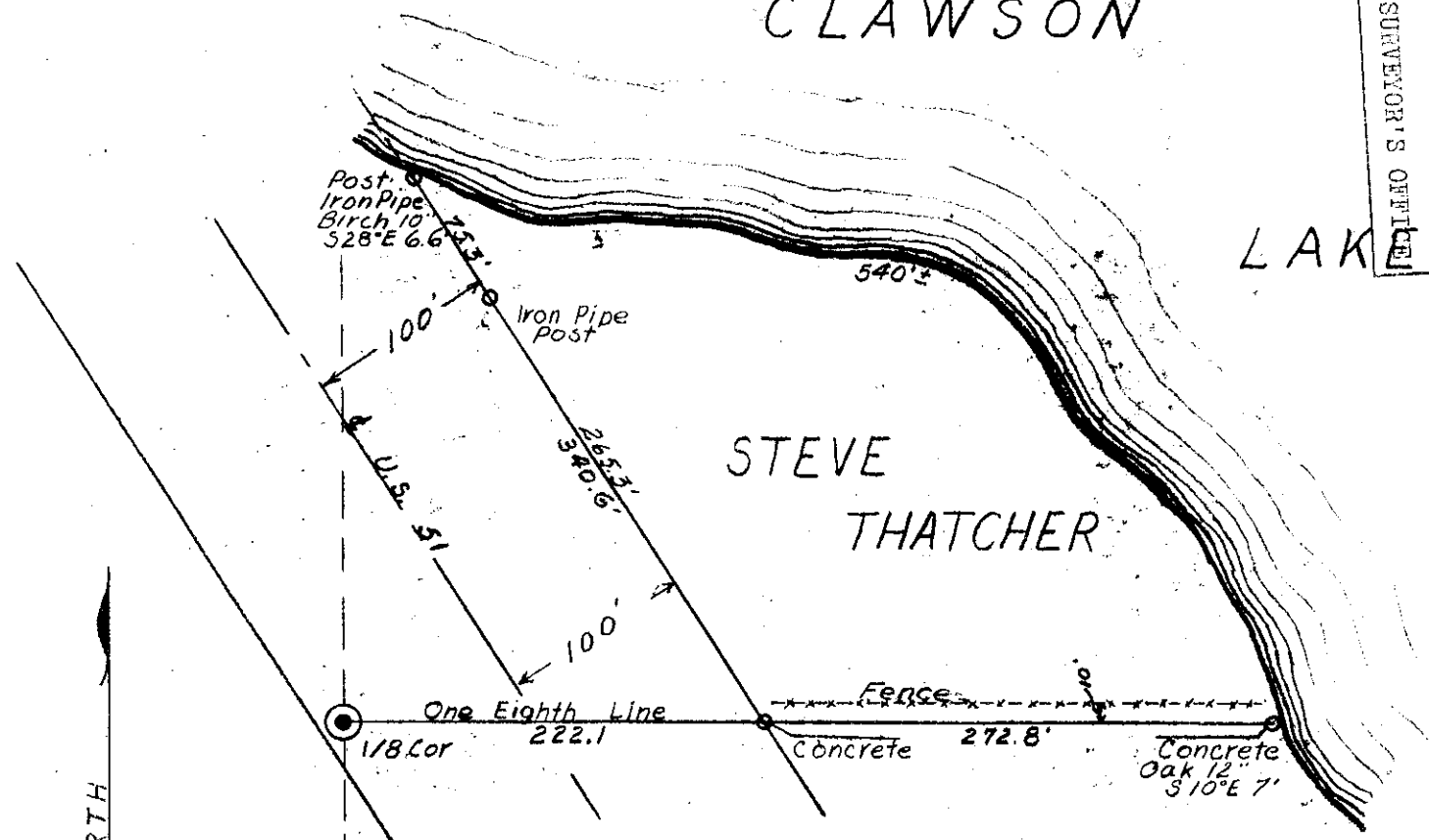


MAP # **L 22225**
 DATE FILED **NOV 01 2005**
 BY *[Signature]*
 DESCRIPTION FILED
 ONEIDA CO. SURVEYOR'S OFFICE

CLAWSON

LAK

STEVE
THATCHER

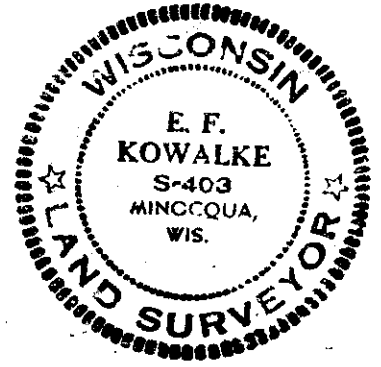


PART OF

NW 1/4 of NE 1/4

SECTION 23-T39N-R6E

ONEIDA COUNTY, WISCONSIN



SCALE 1 INCH = 100 FEET

E. F. Kowalke
SURVEYOR

AUGUST 1957

1-A-46

L 22225

A.L.B.