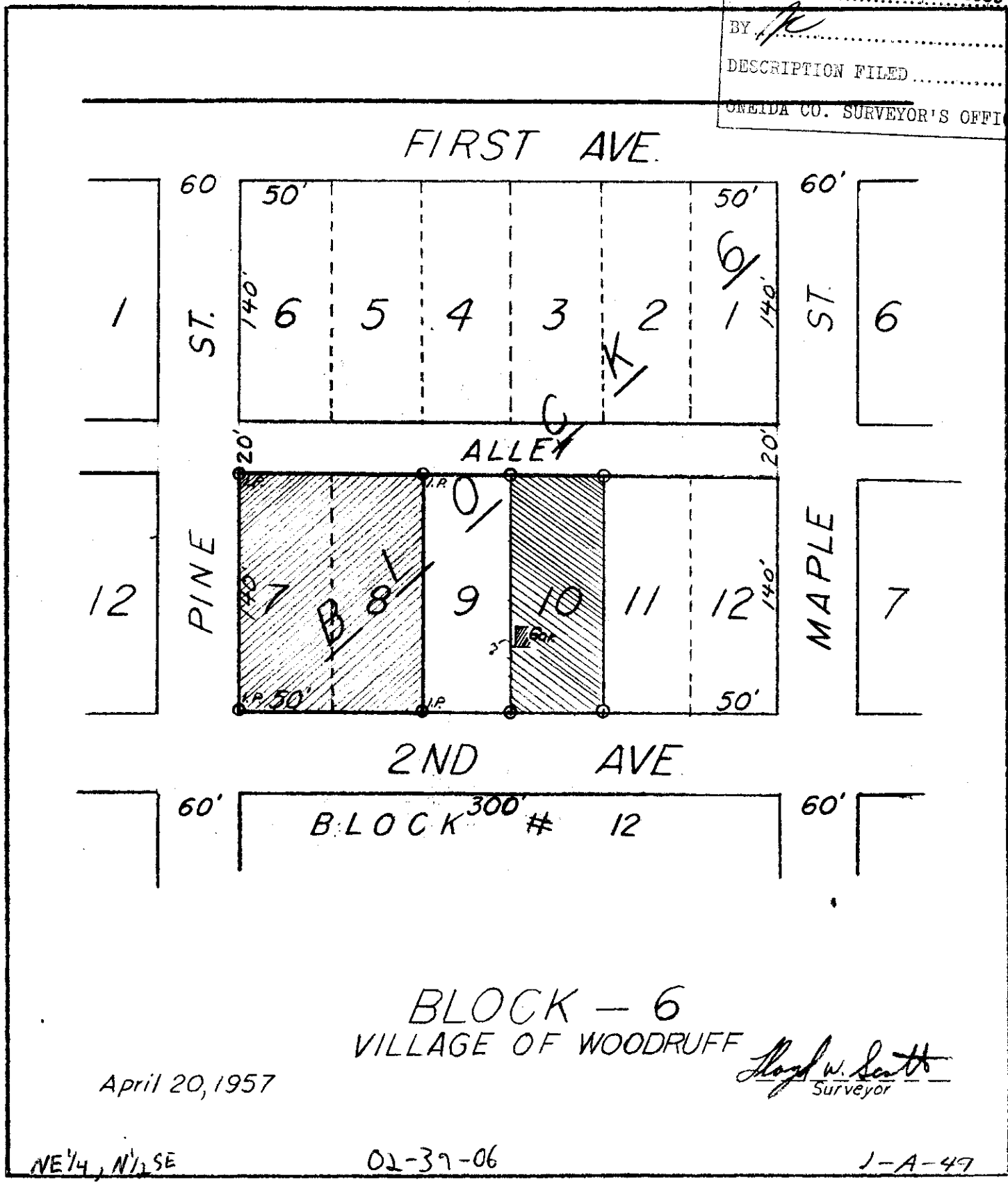


MAP # **L2226**
 DATE FILED **NOV 01 2005**
 BY *[Signature]*
 DESCRIPTION FILED
 FLORIDA CO. SURVEYOR'S OFFICE



BLOCK - 6
 VILLAGE OF WOODRUFF

April 20, 1957

Floyd W. Smith
 Surveyor

NE 1/4, N 1/2 SE

02-37-06

1-A-47