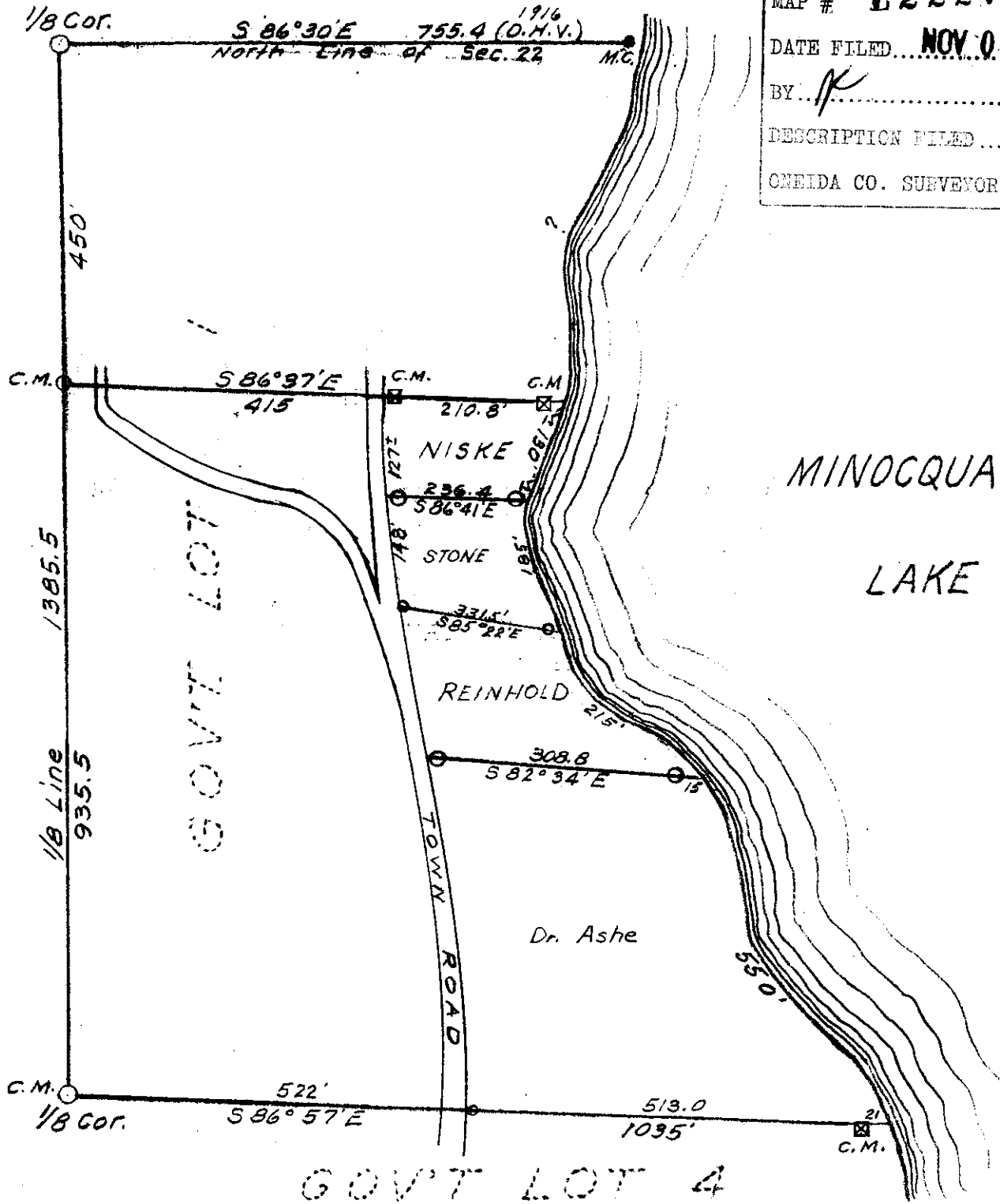


L2227

MAP #	L2227
DATE FILED	NOV 01 2005
BY	<i>R</i>
DESCRIPTION FILED	
ONEIDA CO. SURVEYOR'S OFFICE	



GOV'T LOT 1
 SECTION 22, T39N, R6E
 ONEIDA COUNTY, WIS.

NOV. 1957

E. F. Kowalke
SURVEYOR

1-A-50

L2227

L2227