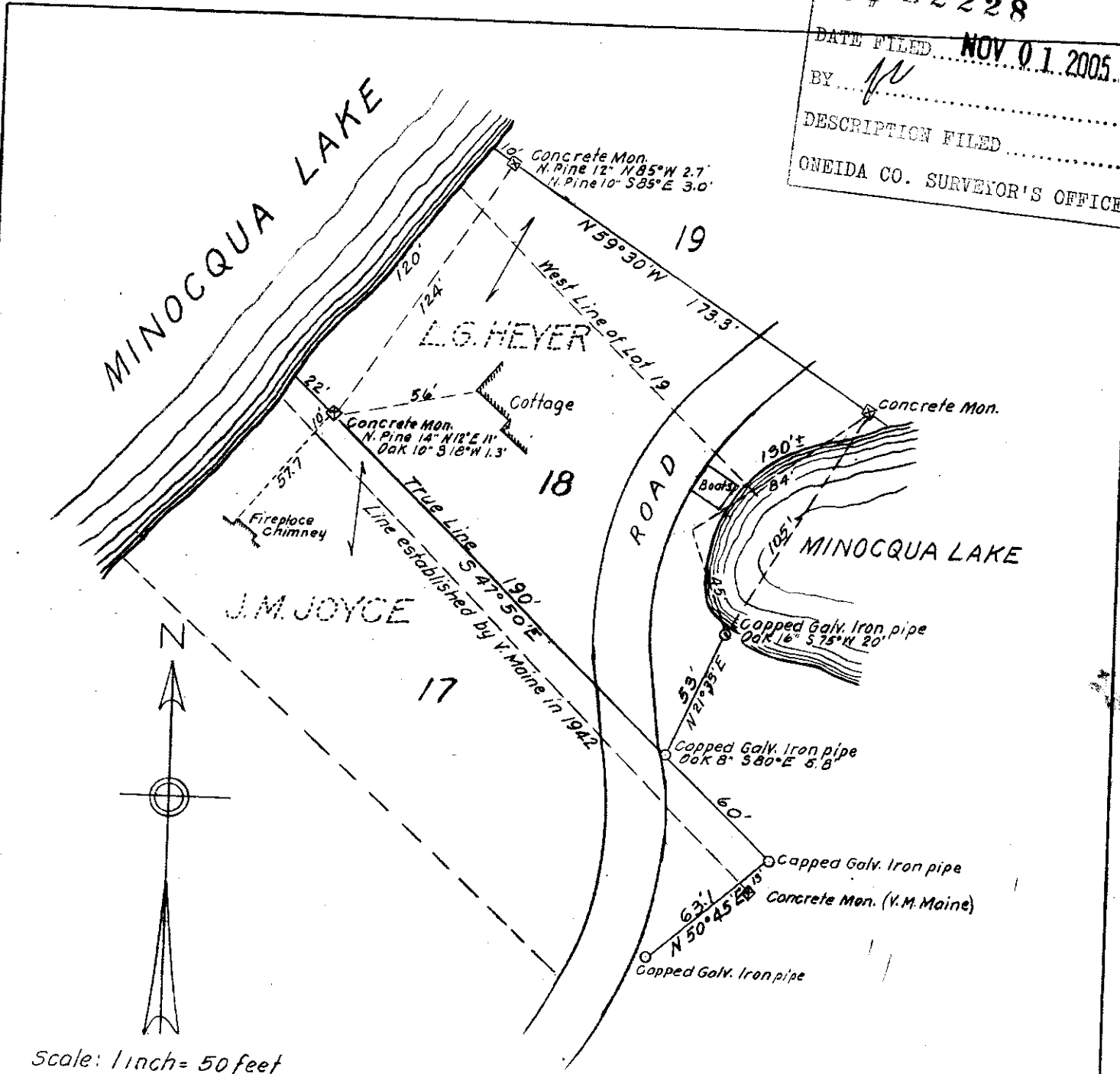


L2228

MAP # **L2228**
 DATE FILED **NOV 01 2005**
 BY *JN*
 DESCRIPTION FILED
 ONEIDA CO. SURVEYOR'S OFFICE



Scale: 1 inch = 50 feet

PART OF
HOWARDS POINT
 IN
SECTION 13, T39N-R6E
 ONEIDA COUNTY, WIS.

June 12, 1958

E. F. Kowalke
Surveyor



1-A-53
L2228

L2228

GL 34