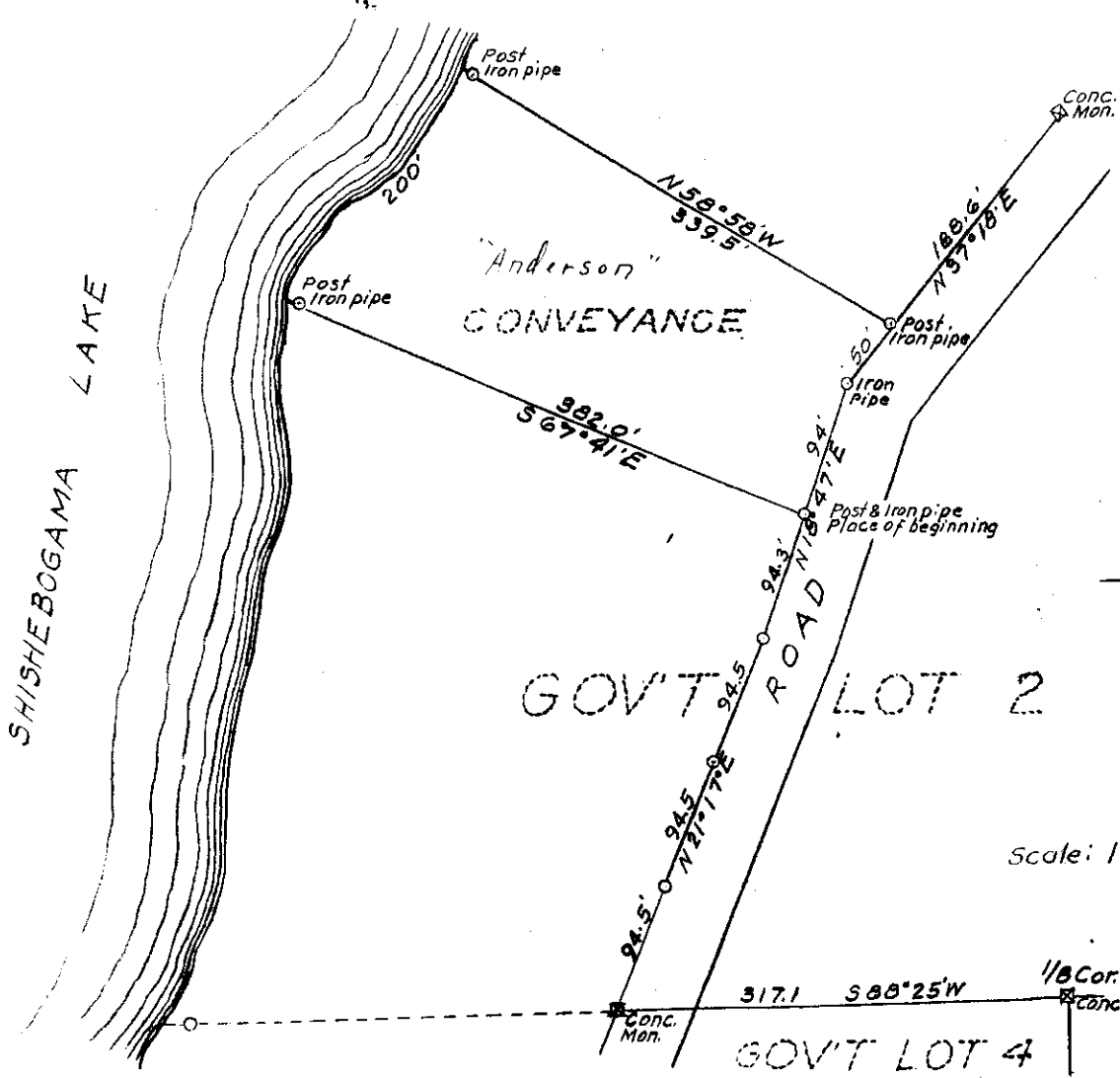


L2230

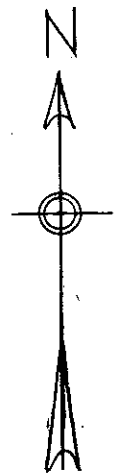
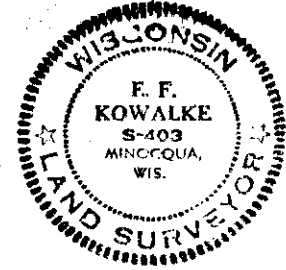
L2230



PART OF
GOV'T. LOT 2
SECTION 2, T39N-R5E

ONEIDA COUNTY, WISCONSIN
 Aug. 2, 1958

E. J. Kowalke
 surveyor



Scale: 1 inch = 100 feet

1-A-63

MAP # **L2230**

DATE FILED **NOV 01 2005**

BY *[Signature]*

DESCRIPTION FILED

ONEIDA CO. SURVEYOR'S OFFICE

L2230