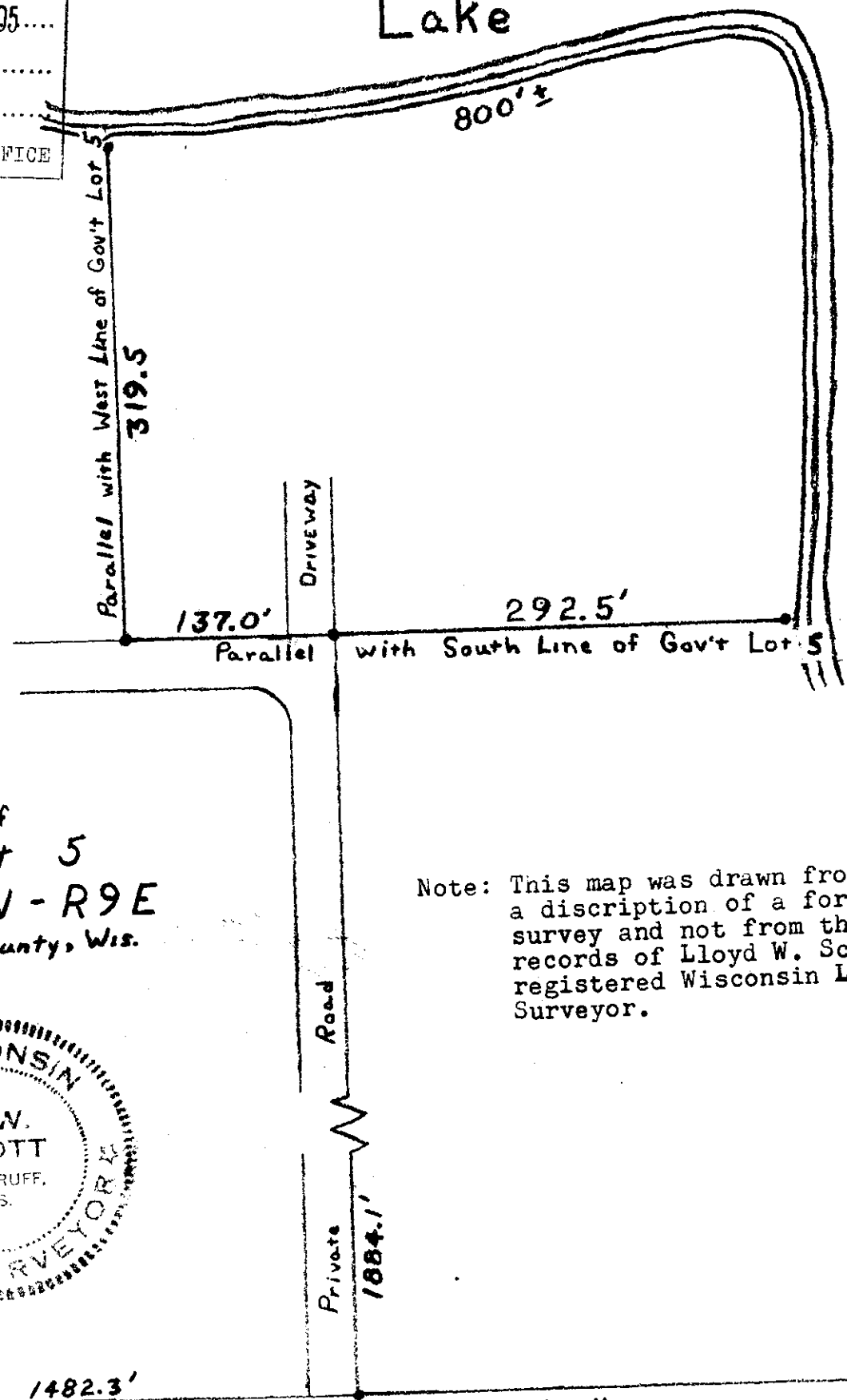


MAP # **L2233**
 DATE FILED... **NOV. 01. 2005**...
 BY... *[Signature]*...
 DESCRIPTION FILED...
 ONEIDA CO. SURVEYOR'S OFFICE

Dam Lake



Part of
Gov't Lot 5
Sec. 17, T39N - R9E
 Oneida County, Wis.

Note: This map was drawn from a discription of a former survey and not from the records of Lloyd W. Scott, registered Wisconsin Land Surveyor.

