

L2236

# LOT 2

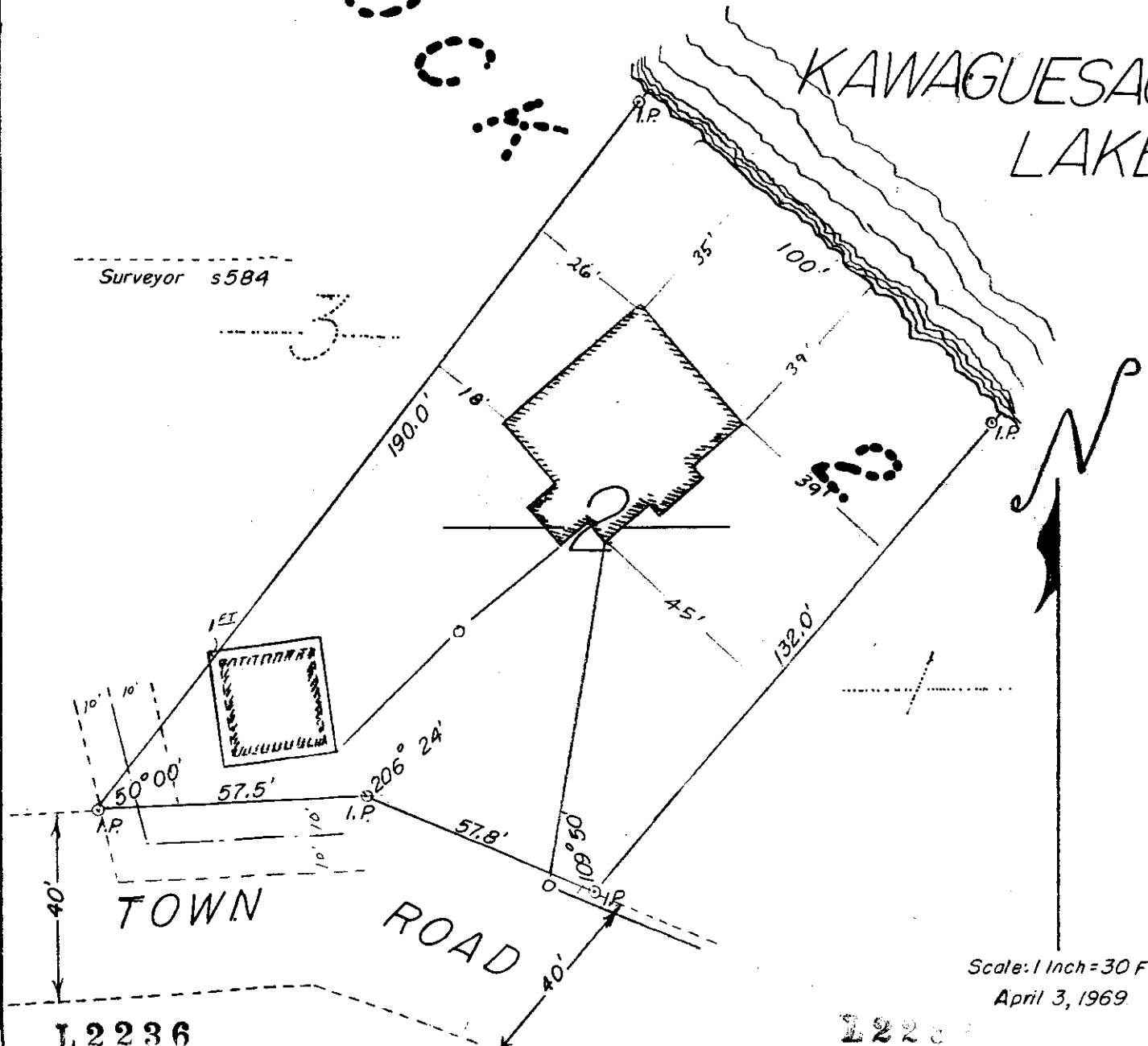
OF THE  
E-WAU-NA PLAT  
IN  
GOV'T LOT 186  
SECTION 14 T39N R6E  
ONEIDA COUNTY, WIS.

MAP # **L2236**  
DATE FILED **NOV. 01 2005**  
BY *[Signature]*  
DESCRIPTION FILED  
ONEIDA CO. SURVEYOR'S OFFICE

W  
A  
U  
N  
A

KAWAGUESAG  
LAKE

Surveyor s584



1-A-106

L2236

Scale: 1 Inch = 30 Feet  
April 3, 1969

L2236