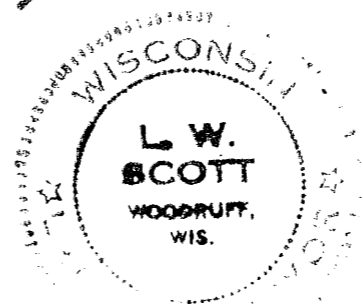


2242

10942

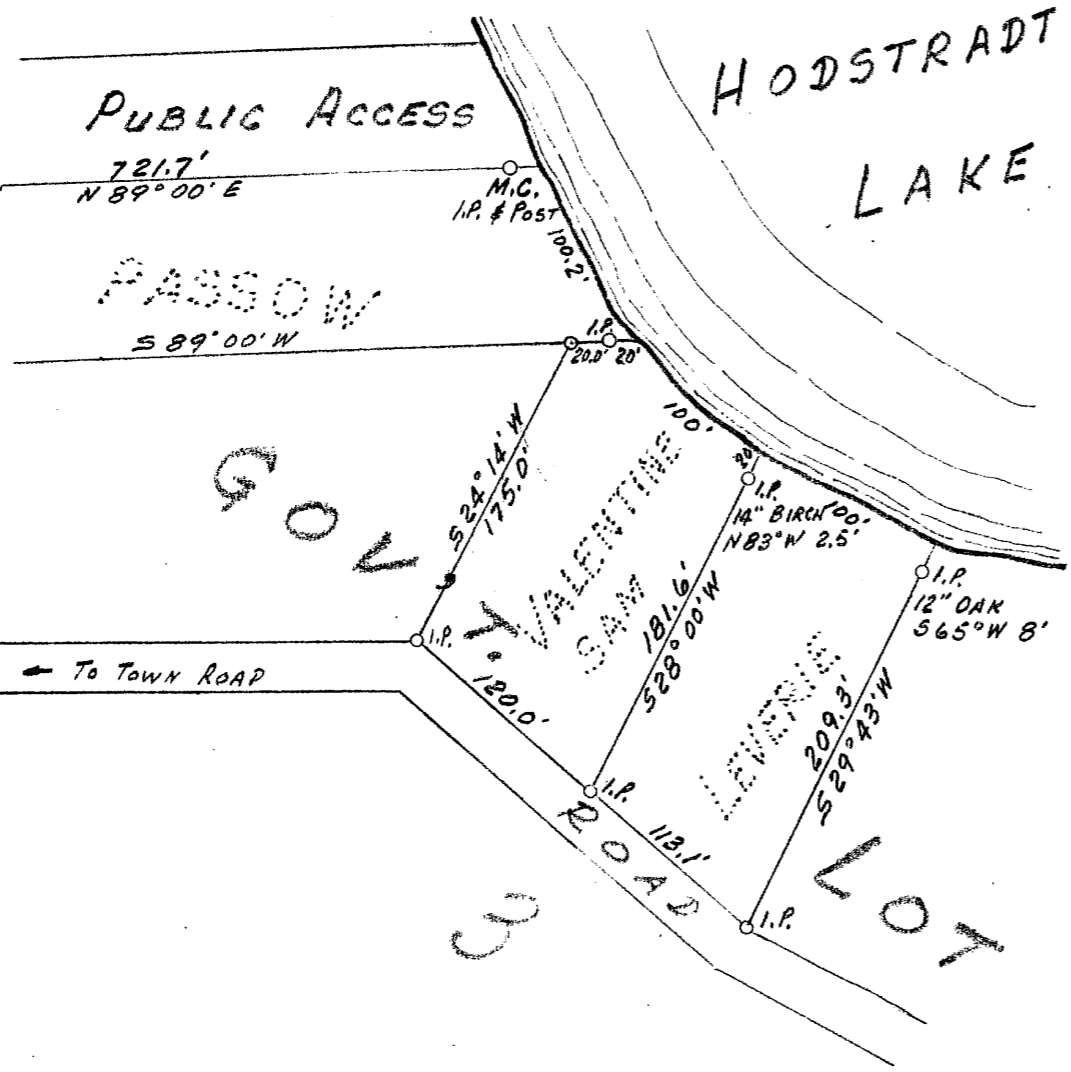
PART OF
GOV'T. LOT 3
SECTION 12, T38N-R7E
ONEIDA COUNTY, WIS.

L.W. Scott
SURVEYOR S-584



SEC. COR.

2 1
11 12



SCALE: 1"=100'
SEPT. 1964
REVISED SEPT. 1970

1-A-109

DESCRIPTION FILED
ONEIDA CO. SURVEYOR'S OFFICE
BY: *RS*
DATE FILED: NOV. 01 2005
MAP # 12242

224