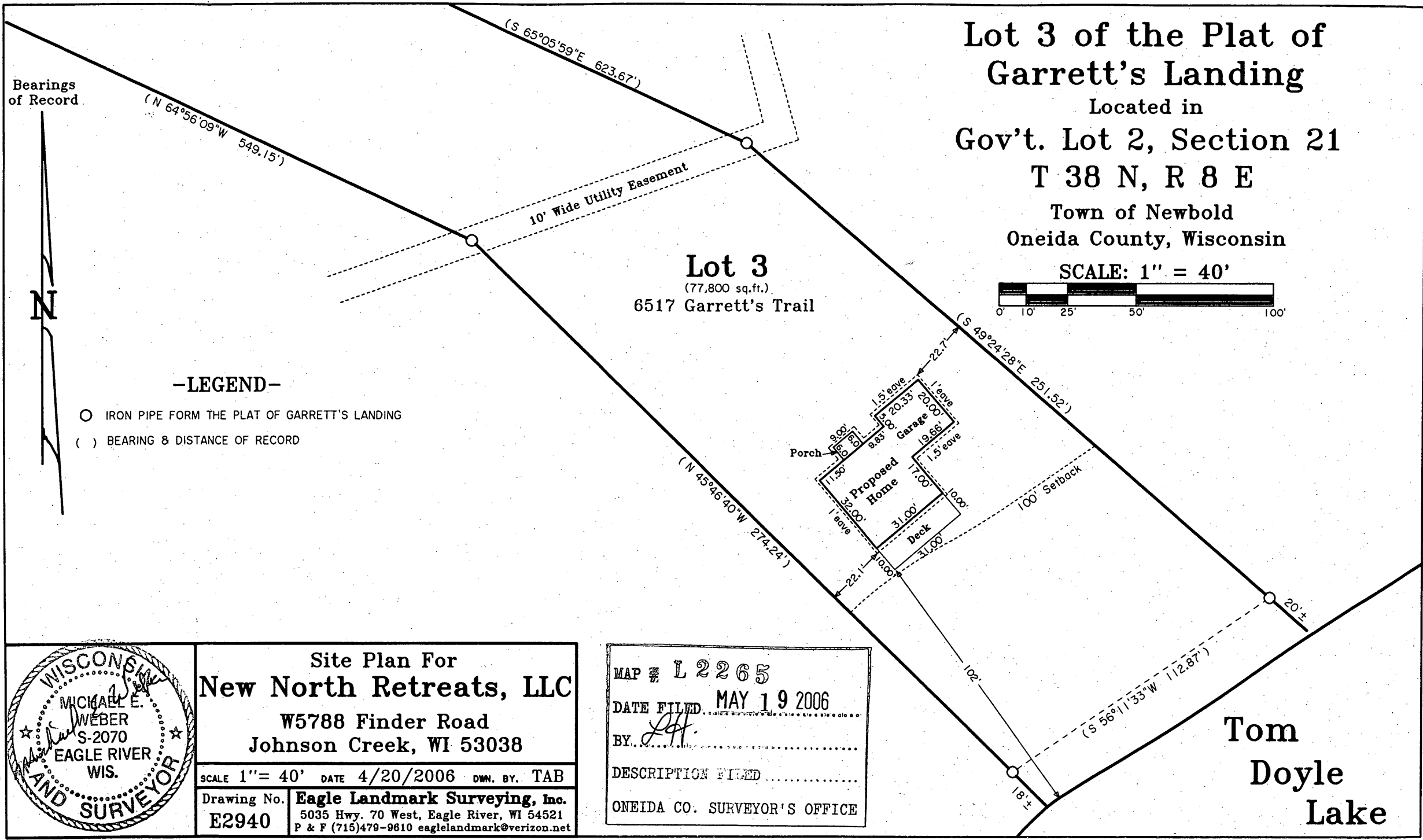


L 2265

L 2265

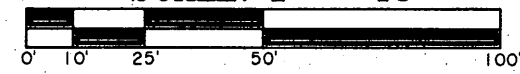


Lot 3 of the Plat of Garrett's Landing

Located in
Gov't. Lot 2, Section 21
T 38 N, R 8 E

Town of Newbold
Oneida County, Wisconsin

SCALE: 1" = 40'

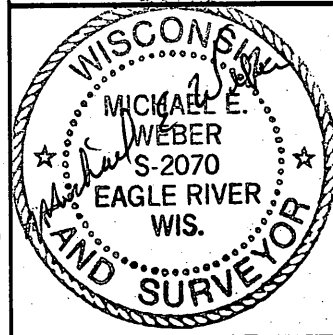


Bearings
of Record



-LEGEND-

- IRON PIPE FORM THE PLAT OF GARRETT'S LANDING
- () BEARING & DISTANCE OF RECORD



Site Plan For
New North Retreats, LLC
W5788 Finder Road
Johnson Creek, WI 53038

SCALE 1" = 40' DATE 4/20/2006 DWN. BY. TAB

Drawing No. **E2940** Eagle Landmark Surveying, Inc.
5035 Hwy. 70 West, Eagle River, WI 54521
P & F (715)479-9610 eaglelandmark@verizon.net

MAP # L 2265
DATE FILED MAY 19 2006
BY *JH*
DESCRIPTION FILED
ONEIDA CO. SURVEYOR'S OFFICE

Tom
Doyle
Lake

L 2265

L 2265