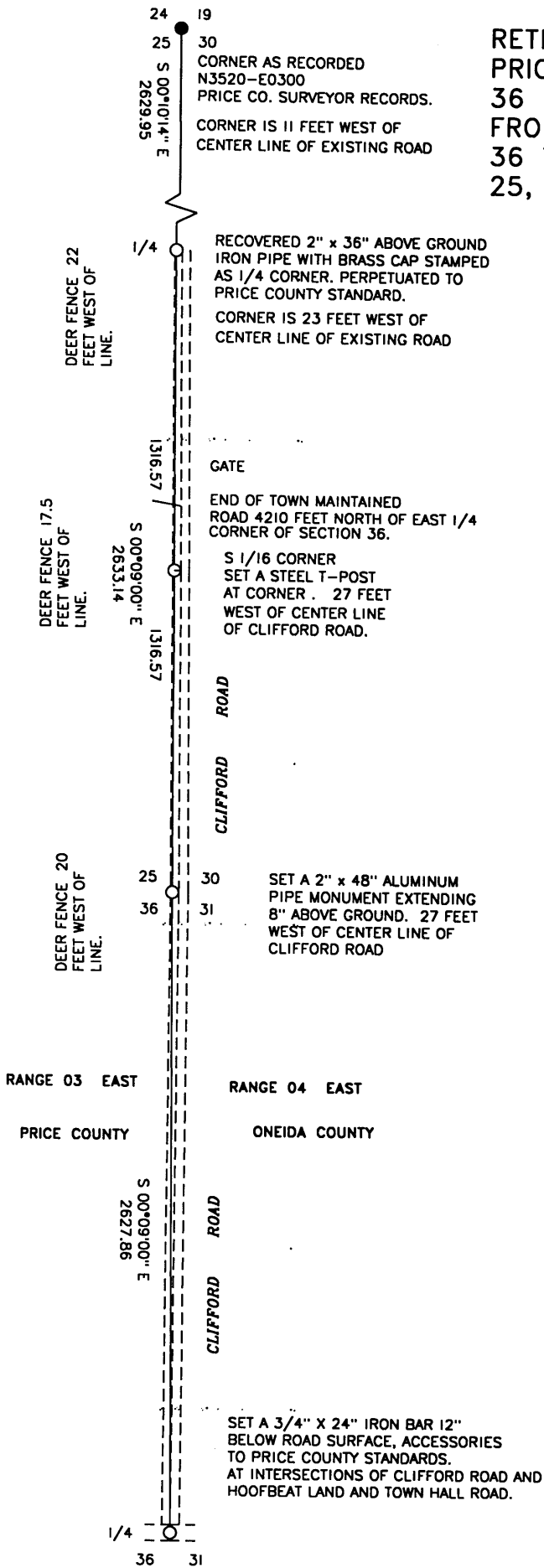


### MAP OF SURVEY

RETRACEMENT OF RANGE LINE BETWEEN PRICE AND ONEIDA COUNTIES, TOWNSHIP 36 NORTH, RANGES 3 AND 4 EAST, FROM THE EAST 1/4 CORNER OF SECTION 36 TO THE NORTHEAST CORNER OF SECTION 25, T 36 N, R 03 E. TOWN OF KNOX.



SURVEY NOTES: THIS SURVEY WAS MADE AT THE REQUEST OF THE KNOX TOWN CHAIRMAN TO LOCATE THE THE SECTION LINES SEPERATING PRICE AND ONEIDA COUNTIES. PRICE COUNTY RECORDS FB 86-17 THRU 22 AND V-1583 AND V-2056 WERE USED TO ASCERTAIN THE LOCATION OF THE PUBLIC LAND CORNERS.

IN 1937 SURVEYOR MITCHEL SET THE MONUMENT AT THE EAST 1/4 OF SECTION 25, WHILE SUBDIVIDING SECTION 25. HIS NOTES SHOW AN "OLD TOWN ROAD" TO THE SOUTH OF THE CORNER AND A "BRUSH ROAD" WITH "1/2 MILE DITCHED" TO THE NORTH.

AT THE WEST 1/4 OF SECTION 25, MITCHEL FOUND A CAR SPRING IN THE ROAD AND OFF SET HIS MONUMENT. AT THE EAST QUARTER HE FOUND A WOOD POST WHICH WAS NOT IN THE ROAD, BECAUSE HE DOES NOT OFF SET THE NEW MONUMENT.

THE EAST 1/4 CORNER OF SECTION 36 IS SET IN THE INTERSECTION OF ROADS BASED ON SURVEYOR VAUGHANS 1914 SURVEY WHICH BEGAN THERE. I CONSULTED WITH ONEIDA COUNTY SURVEYOR, MIKE ROMPORTL, AND AGREED THAT THIS WAS THE PROPER LOCATION.

THE SOUTHEAST CORNER OF SECTION 25 WAS PROPORTIONED ON LINE BETWEEN THE QUARTER CORNERS NORTH AND SOUTH BASED ON THE 1914 DISTANCES OF VAUGHAN. THIS FIT WELL WITH THE MEASURED DISTANCE AND BEARING FROM THE FOUND CORNERS OF MITCHEL IN 1937 TO THE NORTH.

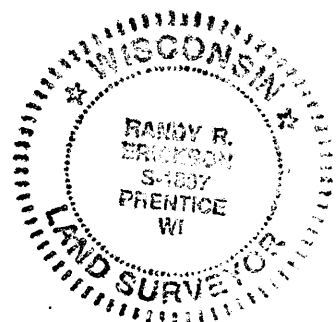
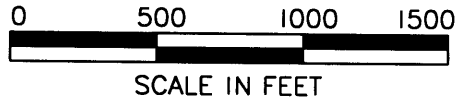
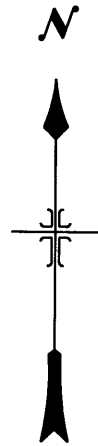
BECAUSE THE 1/4 CORNER AND SECTION CORNER NORTH OF THE SOUTHEAST CORNER OF 25 FELL WEST OFF THE EXISTING ROAD, AND THE BEARING FIT SO WELL, I FELT THIS WAS THE BEST METHOD TO RESTORE THE SECTION CORNER.

SURVEY WAS MADE USING REAL TIME KINEMATIC GPS. BEARINGS AND DISTANCES ARE GRID, BASED ON WISCONSIN NORTH ZONE STATE PLANE COORDINATES.

THE MAP AND ACCOMPANYING NOTES ARE CORRECT AND ACCURATE TO THE BEST OF MY KNOWLEDGE AND BELIEF.

*Randy R. Erickson* 9-29-2005

RANDY R. ERICKSON  
WISCONSIN REGISTERED LAND SURVEYOR  
#1897



MAP # **L2309**  
 DATE FILED **NOV 02 2006**  
 BY *[Signature]*  
 DESCRIPTION FILED  
 ONEIDA CO. SURVEYOR'S OFFICE

L2309