

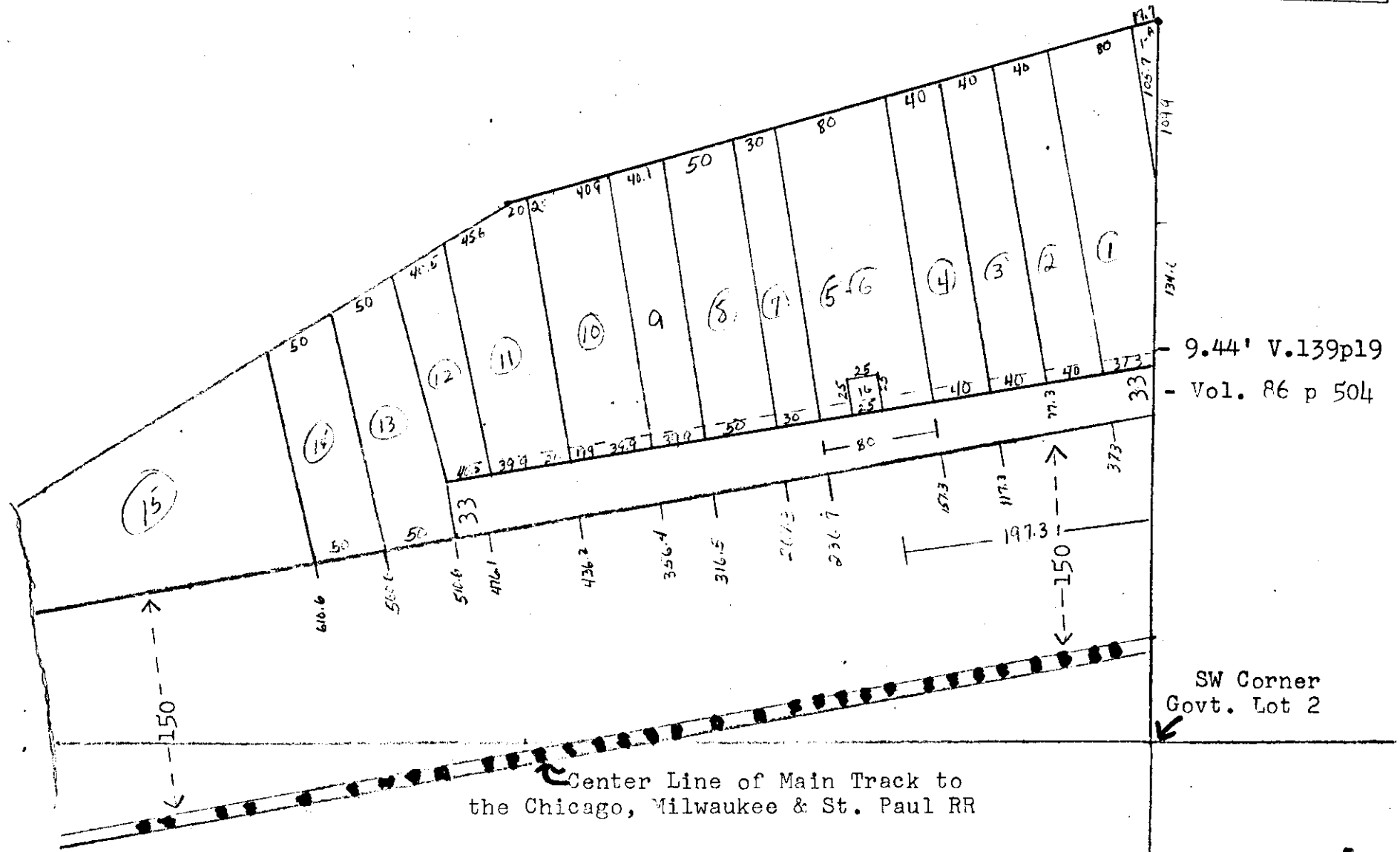
L 2340

Being a Part of Government Lot 4 Sec. 14-39-6 E.

Lake Kawaguesaga

Henry C. Payne Trustee's Second Addition  
to Minocqua,

MAP # **L 2340**  
 DATE FILED **MAY 25 2007**  
 BY *K*  
 DESCRIPTION FILED  
 ONEIDA CO. SURVEYOR'S OFFICE



Center Line of Main Track to  
the Chicago, Milwaukee & St. Paul RR

SW Corner  
Govt. Lot 2

L 2340

L 2340