

MAP # **12352**

DATE FILED **JUL 16 2007**

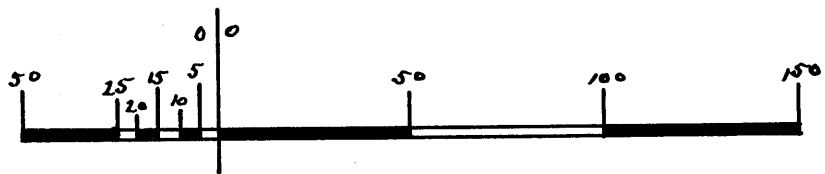
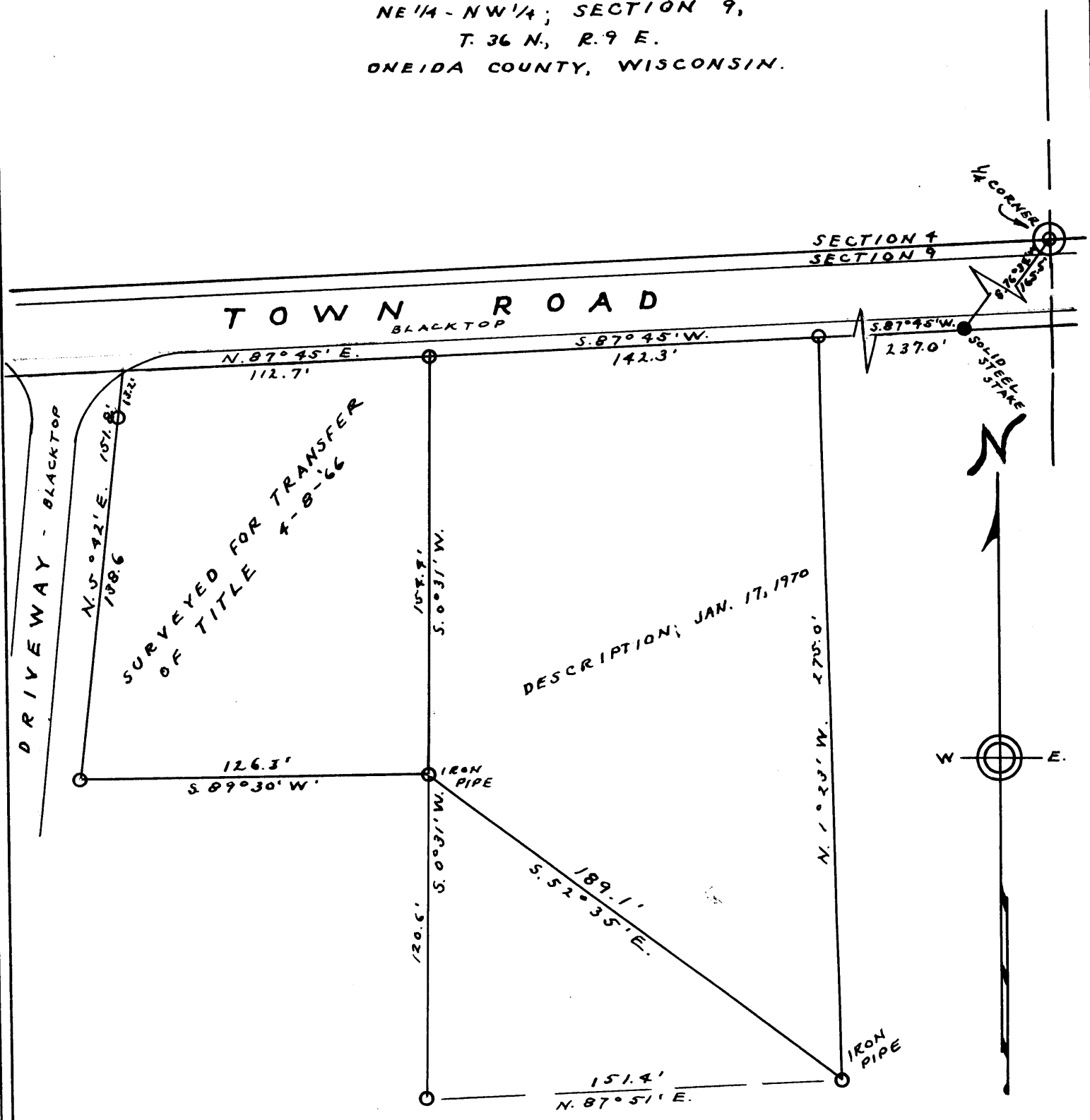
BY *[Signature]*

DESCRIPTION FILED

ONEIDA CO. SURVEYOR'S OFFICE

# SURVEY FOR JOHN OHLSON

IN  
NE 1/4 - NW 1/4; SECTION 9,  
T. 36 N., R. 9 E.  
ONEIDA COUNTY, WISCONSIN.



SCALE 1" = 50'

O LOCATION OF IRON PIPE  
DATED 4-18-66  
REVISED 1-17-1970

*By M. Pochee*

WIS # 5-190

12352

12352