

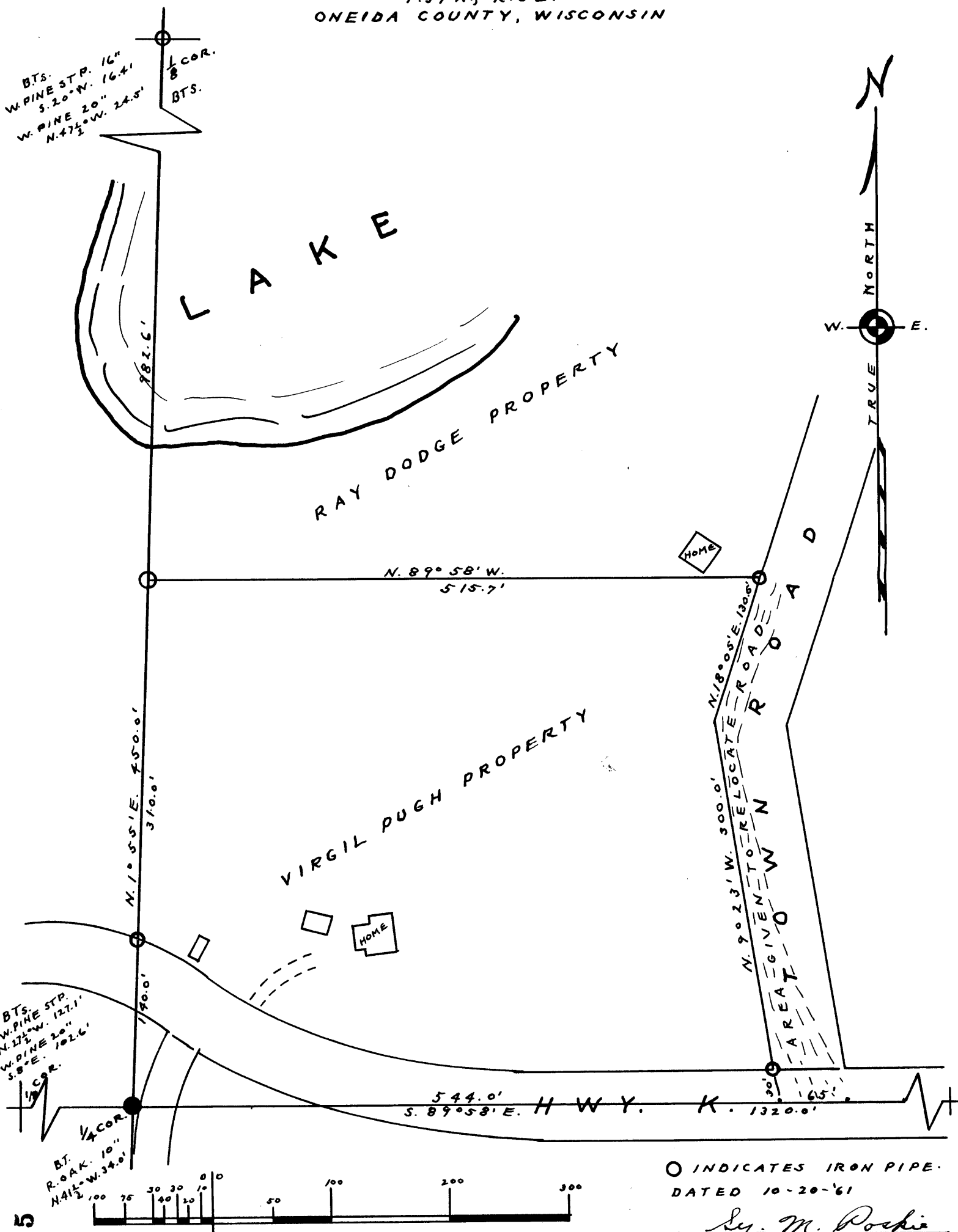
12355

MAP #
DATE FILED JUL 16 2007
BY
DESCRIPTION FILED
ONEIDA CO. SURVEYOR'S OFFICE

SURVEY FOR VIRGIL PUGH

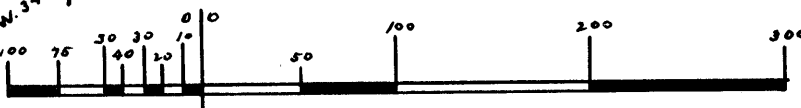
IN
SW 1/4 - SE 1/4 - SECTION 33.
T. 37 N., R. 8 E.
ONEIDA COUNTY, WISCONSIN

12355



BTS.
W. PINE STP. 127.1'
N. 17 1/2° W.
W. PINE 20"
S. 8° E. 102.6'
1/4 COR.
BT. R. OAK. 10"
N. 41 1/2° W. 34.0'

BTS.
W. PINE STP. 16"
S. 20° N. 16.4'
W. PINE 20"
N. 47 1/2° W. 24.5'



scale 1" = 100'

○ INDICATES IRON PIPE.
DATED 10-20-'61

Sy. M. Pochie

12355