

Oneida County Surveyor's Office
 Date... FEB. 14, 1988
 By... MJH
 OCS Area #.....

NW 1/4, SEC. 29, T36N, R9E

SW 1/4

S 88° 55' 30" W / 1343.4

Willmar Lane

E-W 1/4 Line



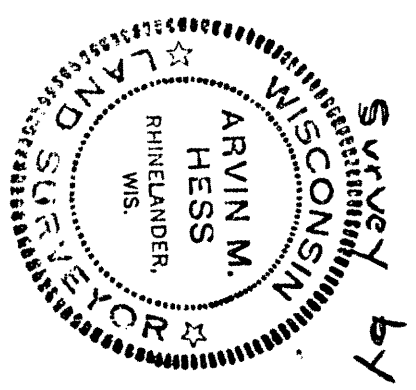
1196.7' / 583±0.4' W

INTERIOR 1/4 Cor.

N-S 1/4 Line

151.5'

No. 000' / 2 ass 19 Rel.



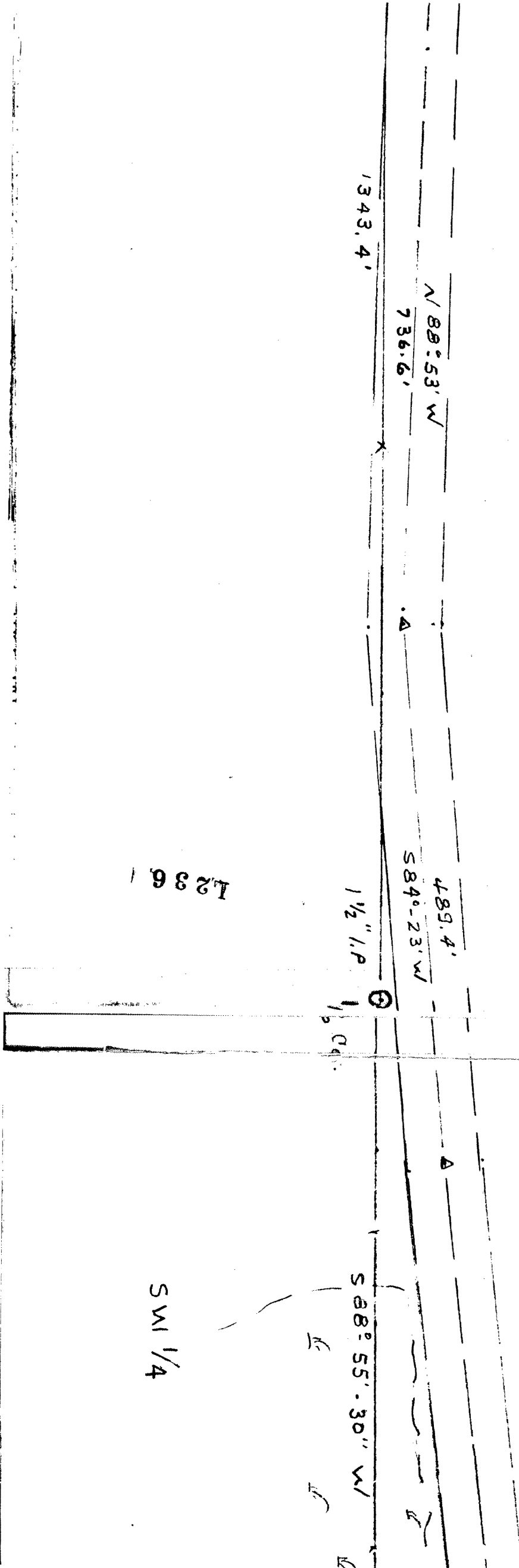
Surveyed by A.M. HESS
 Dec. 1973

Scale 1" = 100'

~~HERBERT MOORE~~
 County Surveyor
 Oneida County, Wisconsin
 Courthouse
 Rhinelander, Wisconsin 54501

1236

1236



L236

SW 1/4

NW 1/4, SEC. 29,

RECEIVED & FILED # **L236**
 Oneida County Surveyor's Office
 Date... **FEB. 14. 1988**
 By... *M J H*
 OCS Area #.....

2" I.P.
Most 1/4 Cen.

280.8'
578.18' W

1343.4'

N 89° 53' W
736.6'

Δ

489.4'
584.23' W

1 1/2" I.P.

1236