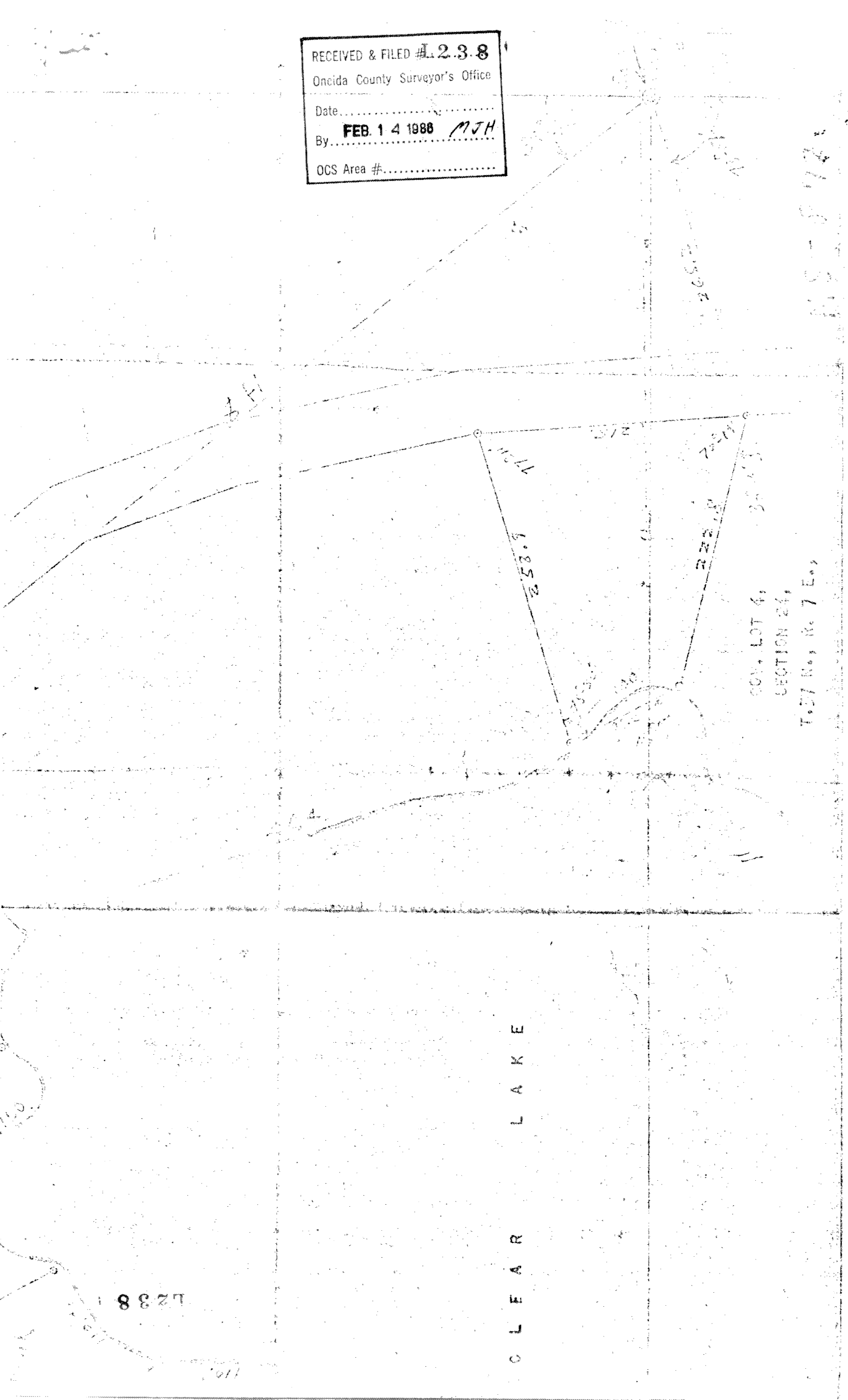


RECEIVED & FILED #L238
Oneida County Surveyor's Office
Date.....
By **FEB 14 1988** MJH
OCS Area #.....



CLEAR LAKE

1238

CON. LOT 4,
SECTION 24,
T. 57 N., R. 7 E.

113-872

465.33

GOV. LOT 1,
SECTION 24,
T. 27 N., R. 7 E.,

N E W
T O W N
R O A D

ORIGINAL ROAD AND EASEMENT OF INGRESS & EGRESS

M A R S H

950. ±

946.7

550. ±

100. ±

335. ±

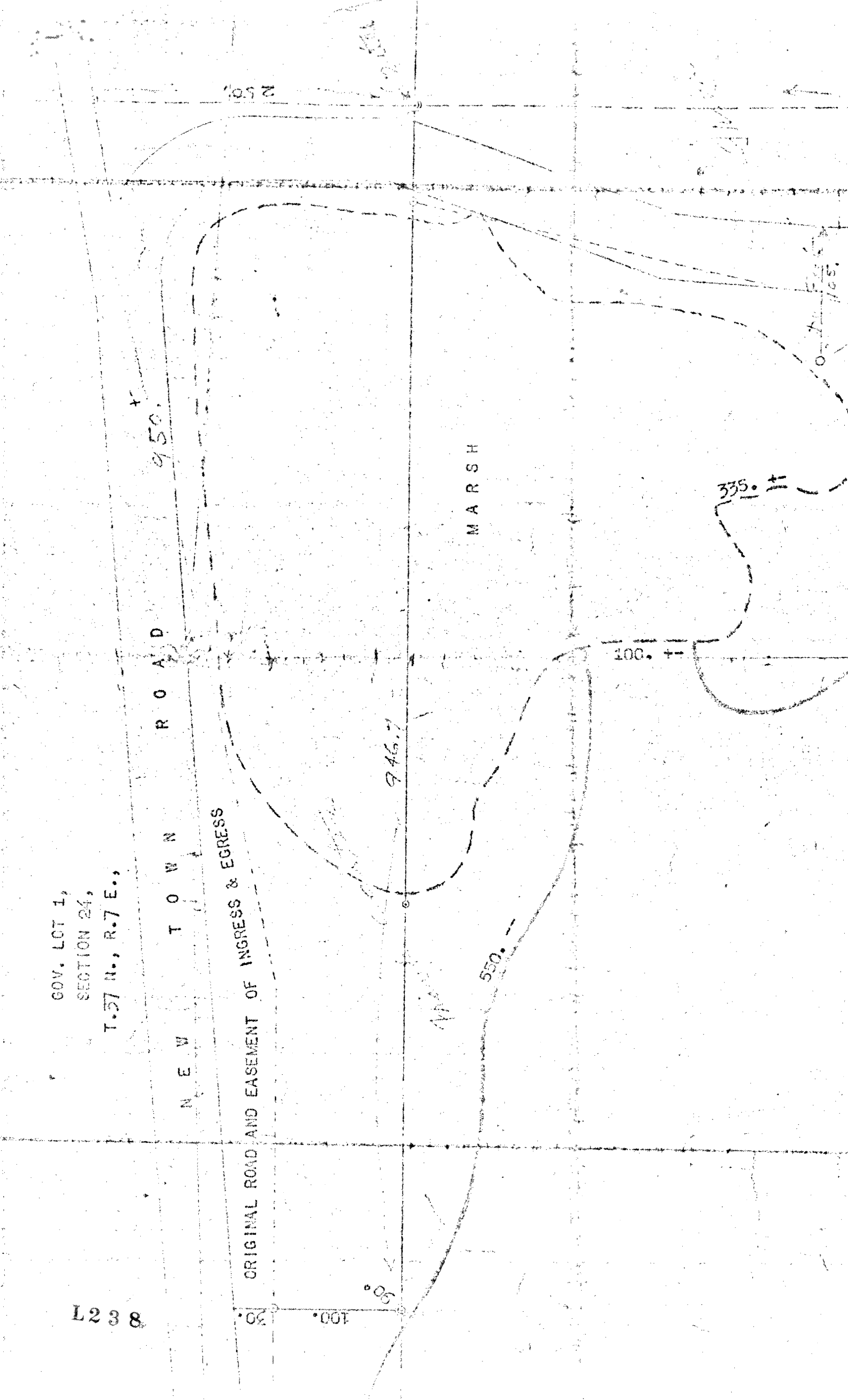
250. ±

165. ±

8 3 2 7

100. ±

50. ±



335. ±

u.s.

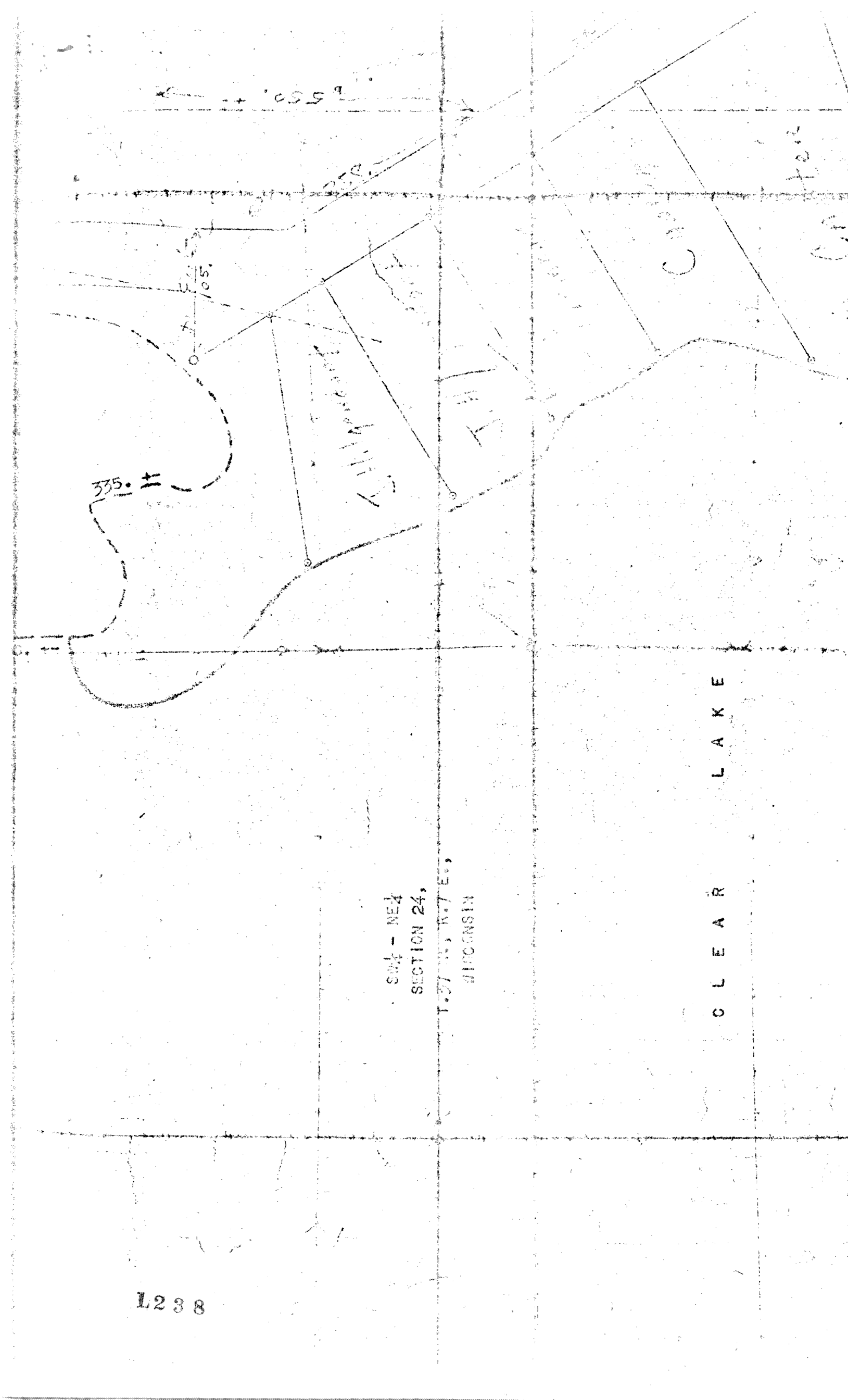
550 ±

SW 1/4 - NE 1/4
SECTION 24,

T. 57 N., R. 7 E.,
WISCONSIN

C L E A R L A K E

L238



L238

282

06

