

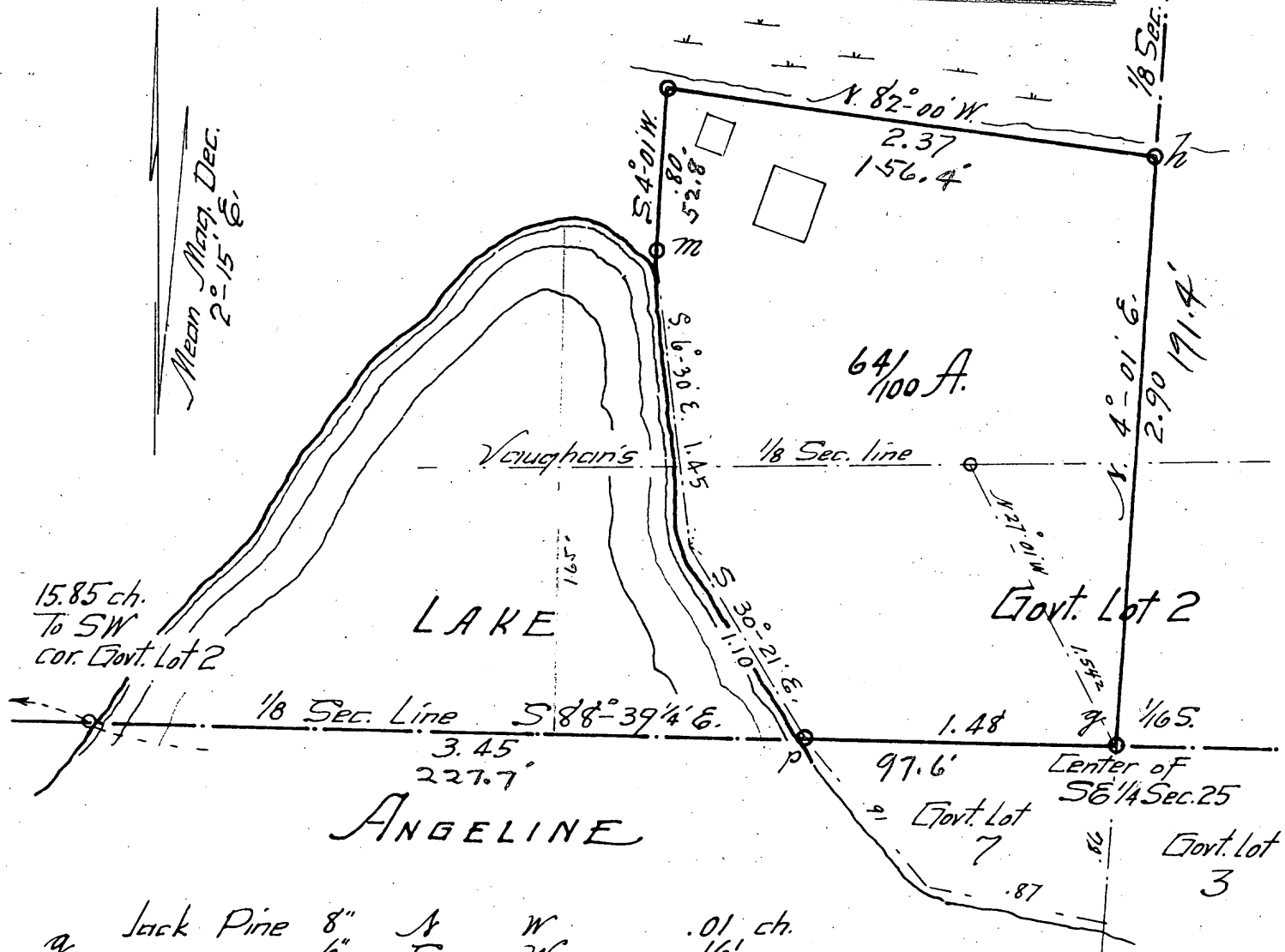
L2449

MAP # **L2449**
 DATE FILED **MAR 03 2008**
 BY *PH*
 DESCRIPTION FILED
 ONEIDA CO. SURVEYOR'S OFFICE

Scale
 80 fts. = 1 inch

True Meridian

Mean Merid. Dec.
 2° 15' E.



q	Jack Pine	8"	N	W	.01 ch.
	"	6"	S	W	.16'
n	Jack Pine	6"	S 19 1/2° W		.16
	Spruce	5"	S 10° 50' E		.195
m	Oak	10"	N 12° 50' E		.278
	"	6"	N 42° 20' E		.292
p	Jack Pine	9"	S 35° E		.04'
	"	6"	N 15° W		.05

RHINELANDER, WIS.
 OFFICE OF COUNTY SURVEYOR
 ONEIDA COUNTY

Placed on file this 12th day of
May A. D. 1933

Harry C. Hall
 County Surveyor.

Surveyor's Certificate

I, Harry C. Hall, do hereby certify that on April 18th 1933, I surveyed the tract of land in Govt. Lot 2, Sec. 25, Tp. 37 N. R. 8 E. Wis. hereon shown, for Arcade Gauthier. That this survey is based upon my subdivision of Sec. 25 executed in 1930. That I ignored the line formerly known as the South line of Govt. Lot 2 and used by Vaughan as the north limit of Lake Angeline Plat (Rec. Vol. 6, page 32). Vaughan's 1/8 corner bears N 27° 01' W. 101.7 ft. from true Center of SE 1/4. That this plat correctly represents my survey in chains and decimals thereof.

Rhineland, Wis.
 April 28th 1933

Harry C. Hall
 County Surveyor, Oneida County, Wis.

L2449

Not Paid For

L2449