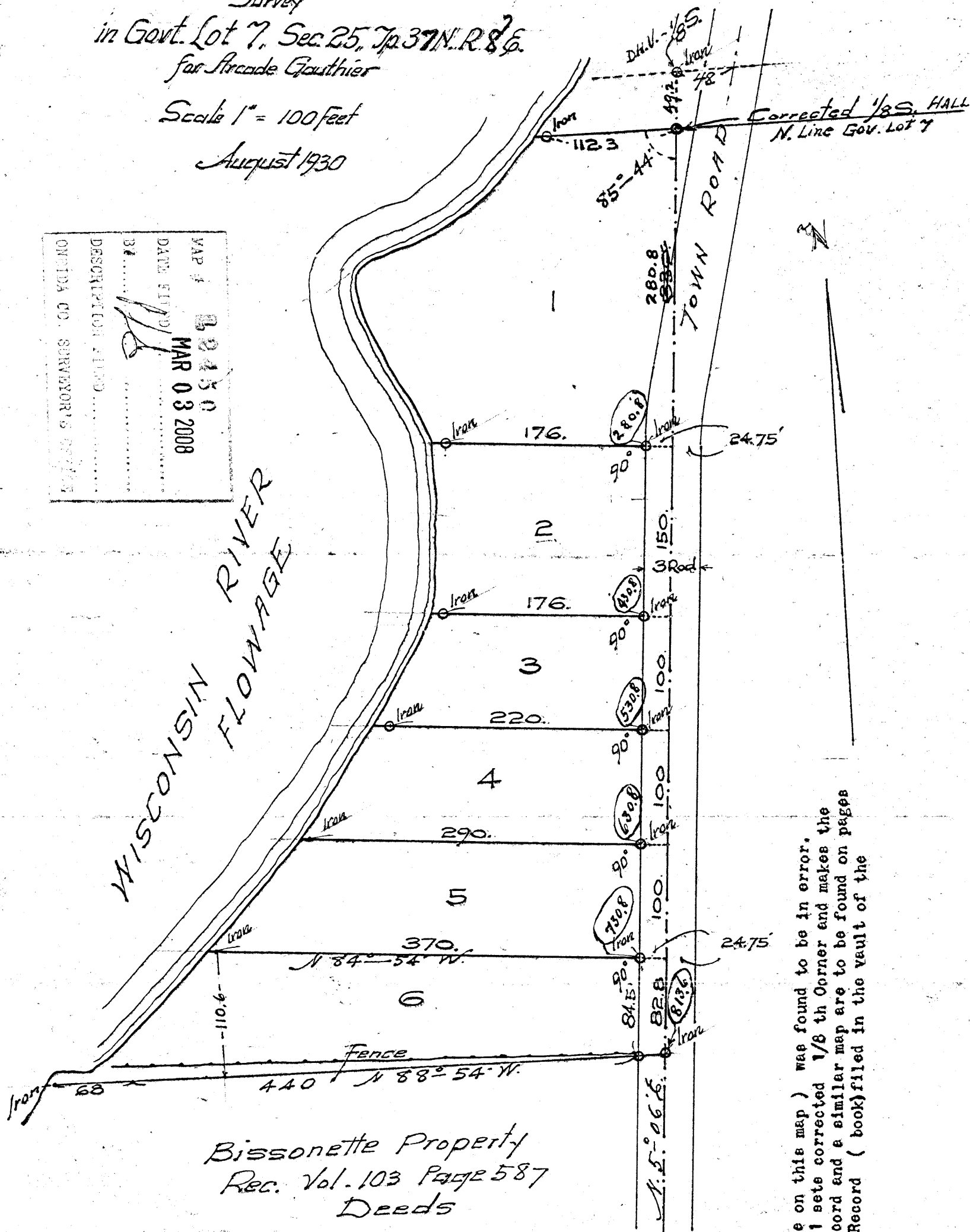


Survey
in Govt. Lot 7, Sec. 25, Tp. 37 N. R. 8 E.
for Arcade Gauthier

Scale 1" = 100 feet

August 1930

MAP #	22450
DATE FILED	MAR 03 2008
DESCRIPTION FILED	
ONEIDA CO. SURVEYOR'S OFFICE	



Bissonette Property
Rec. Vol. 103 Page 587
Deeds

RHINELANDER, WIS.
OFFICE OF COUNTY SURVEYOR
ONEIDA COUNTY

Placed on file this, 25th day of

August A. D. 1930

Harry C. Hall
County Surveyor.

D.H. Vaughan's 1/8 th Corner (shown above on this map) was found to be in error. Therefore, Harry O. Hall, on Oct. 13, 1931 sets corrected 1/8 th Corner and makes the corrections as shown on this map. This record and a similar map are to be found on pages 121 - 122 of H.O. Hall's County Surveyor Record (book) filed in the vault of the Oneida County Clerks Office.

To Orig. M.C. on left bank Wis. Riv. N 88° 54' W 145.

Certificate

I, Harry C. Hall, do hereby certify that on August 23^d 1930, I surveyed the parcels of land, hereon shown, in Govt. Lot 7 in Section 25, Tp. 37 N. R. 8 E. Wisconsin.

Harry C. Hall
County Surveyor, Oneida County.