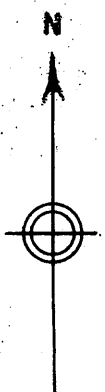
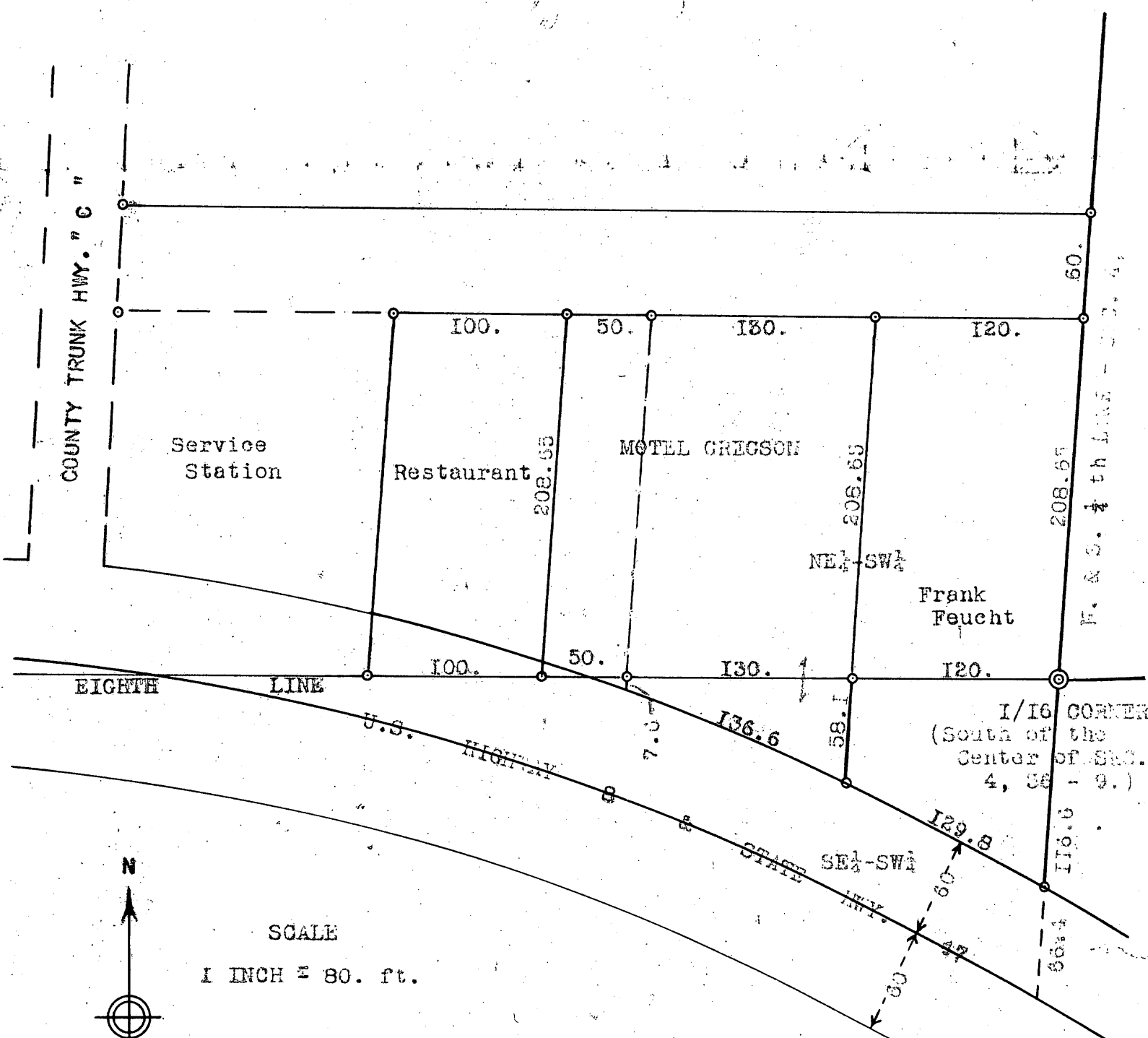


MAP # L2462
 DATE FILED APR. 03 2008.....
 BY..... *PLH*

DESCRIPTION FILED.....
 ONEIDA CO. SURVEYOR'S OFFICE



SCALE
 1 INCH = 80. ft.

SURVEYOR'S CERTIFICATE

I, KEITH M. HALL, HEREBY CERTIFY THAT I HAVE MADE THE ABOVE SURVEY, AND THAT ALL INFORMATION SHOWN IS TRUE AND CORRECT TO THE BEST OF MY KNOWLEDGE AND BELIEF.

SIGNED THIS 20th DAY OF July 1959.

Keith M. Hall

REGISTERED LAND SURVEYOR
 NO. S - 594

KEITH M. HALL
 SURVEYOR
 RHINELANDER, WISCONSIN.