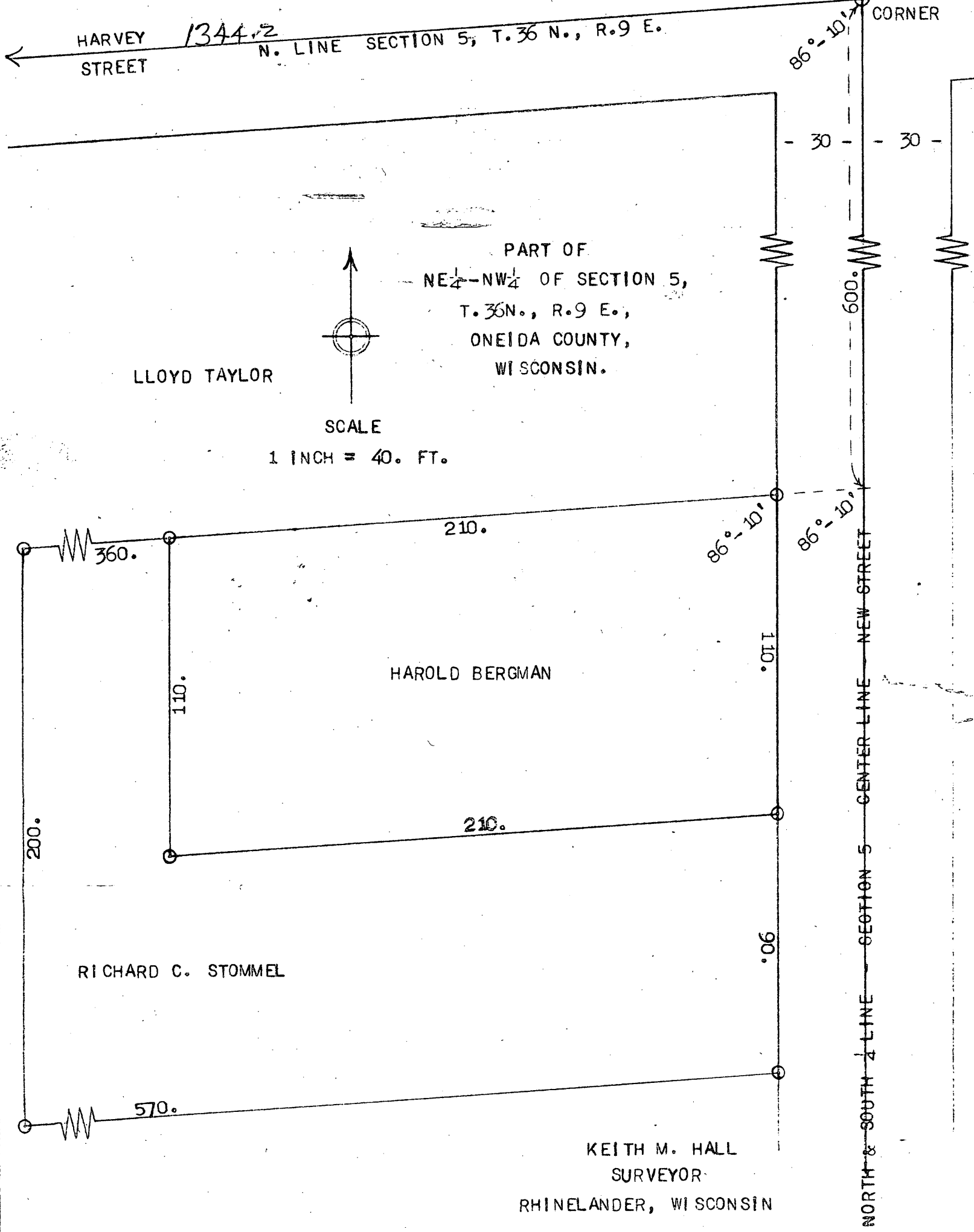


L2463
See map of city (big one)
for 1/8th - and
section corner west.

MAP # L2463
DATE FILED APR. 03. 2008
BY P.H.
DESCRIPTION FILED
ONEIDA CO. SURVEYOR'S OFFICE

1/4 CORNER PRESERVED BY D.H. VAUGHAN - 1911.
PERPETUATED BY KEITH M. HALL - 1947.
DRILL HOLE IN BURIED STONE
NEW BEARING TREES;
B. PINE 10 INCH BRS. S. 43° W. 79.2 FT.
TAMARAC 12 INCH BRS. N. 57° E. 42.6 FT.



LLOYD TAYLOR

PART OF
NE 1/4 - NW 1/4 OF SECTION 5,
T. 36 N., R. 9 E.,
ONEIDA COUNTY,
WISCONSIN.



SCALE
1 INCH = 40. FT.

HAROLD BERGMAN

RICHARD C. STOMMEL

KEITH M. HALL
SURVEYOR
RHINELANDER, WISCONSIN

NORTH & SOUTH 1/4 LINE SECTION 5 CENTER LINE NEW STREET

L2463

L2463