

MAP # ~~22469~~ 22470

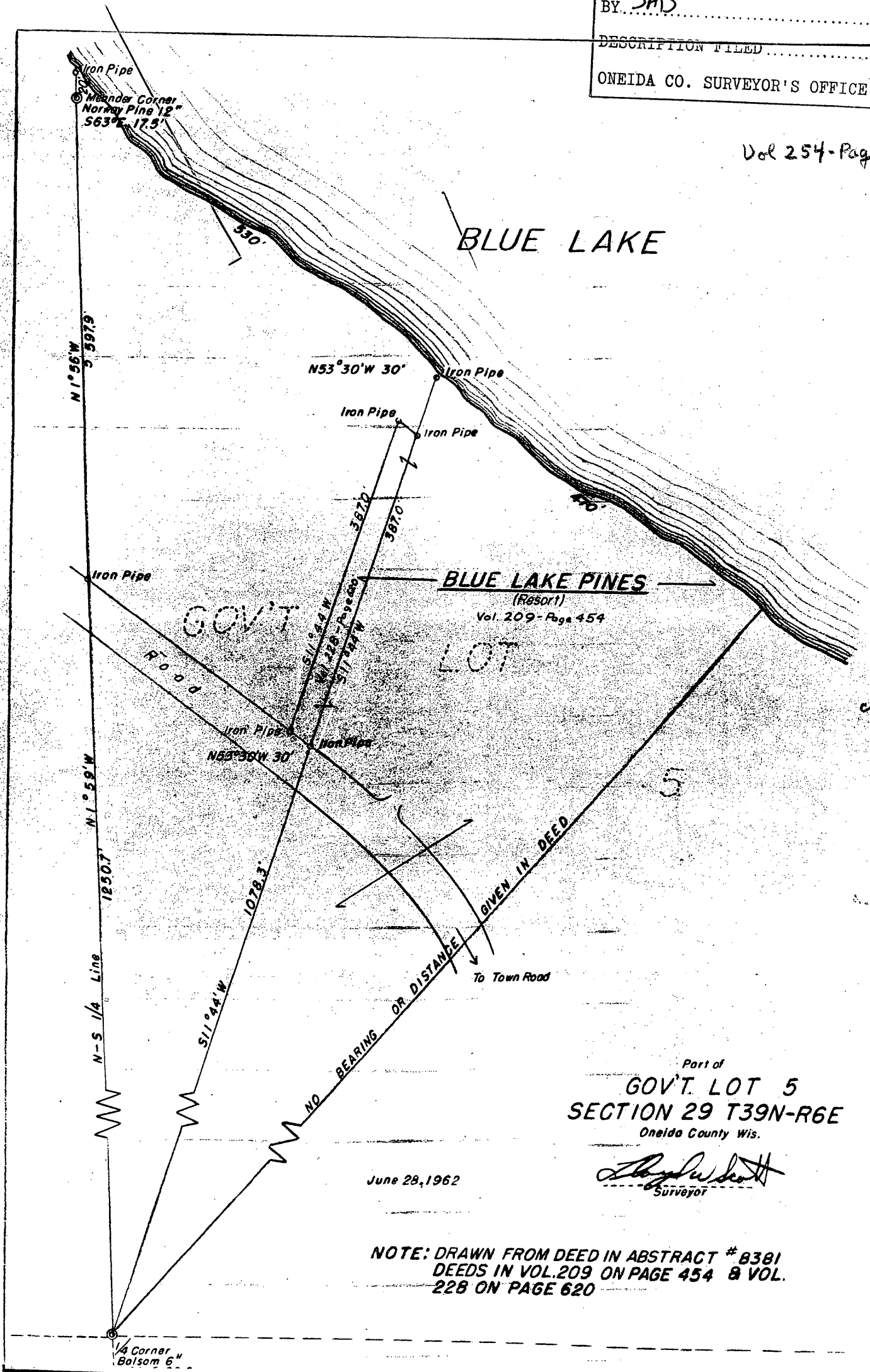
DATE FILE APR. 21. 2008

BY SAB

DESCRIPTION FILED

ONEIDA CO. SURVEYOR'S OFFICE

Vol 254-Page 47



Part of
GOV'T. LOT 5
SECTION 29 T39N-R6E
 Oneida County Wis.

Robert W. Scott
 Surveyor

June 28, 1962

NOTE: DRAWN FROM DEED IN ABSTRACT # 8381
 DEEDS IN VOL. 209 ON PAGE 454 & VOL.
 228 ON PAGE 620

5-E-43