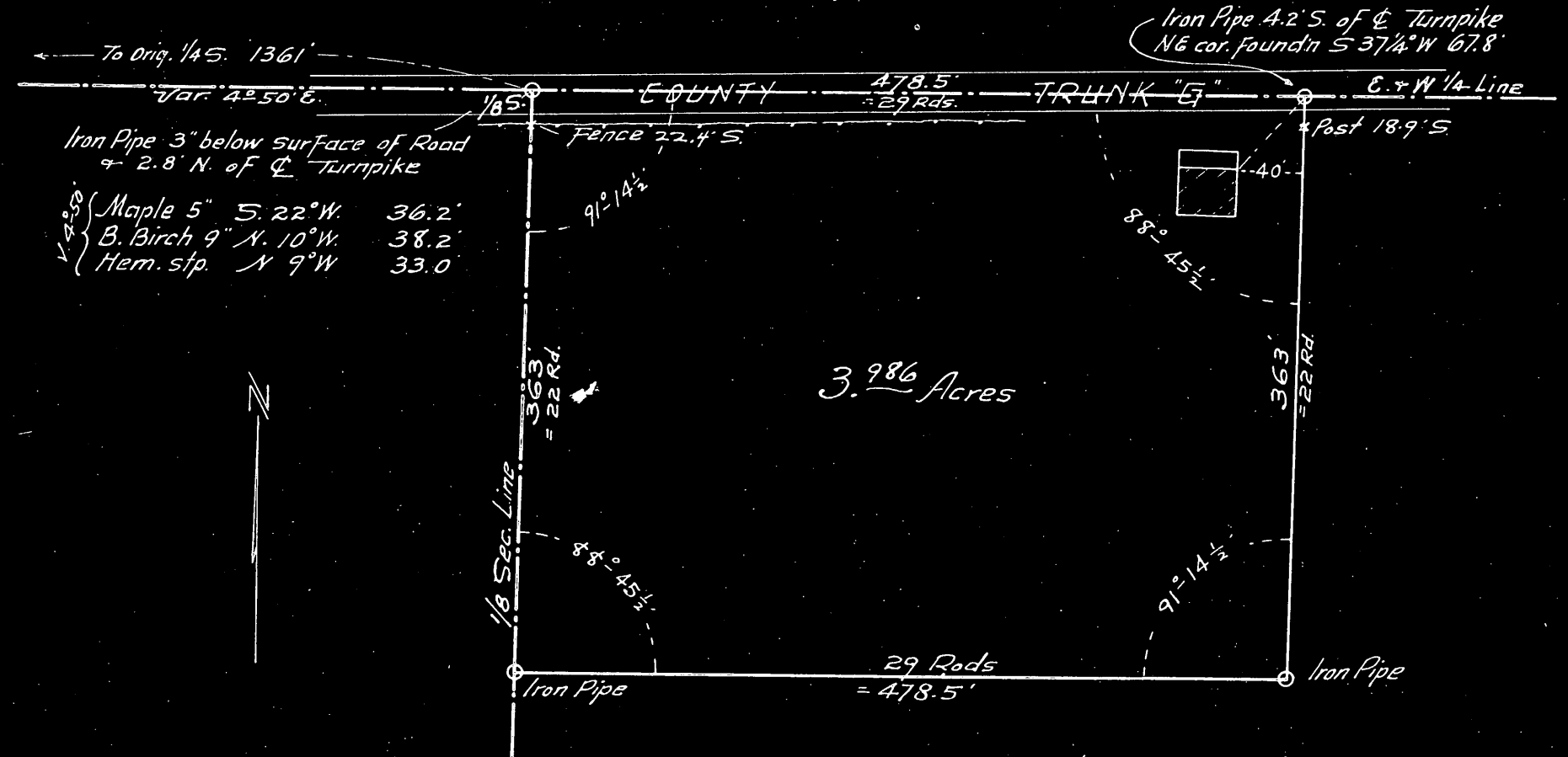


**Plat of Survey**  
of a Tract of land 22 Rods by 29 Rods  
in the Northwest corner of  
the NE 1/4 of SW 1/4 of Sec. 26, Tp. 35 N. R. 10 E. of 4<sup>th</sup> PM. Wis.

Scale 1" = 100 Feet



- Iron Pipe 3" below surface of Road  
 & 2.8' N. of E Turnpike
- Var. 39.0' { Maple 5" S. 22° W. 36.2'
- { B. Birch 9" N. 10° W. 38.2'
- { Hem. stp. N 9° W 33.0'

3.986 Acres



Sept. 17<sup>th</sup> 1931  
 Rhinelander, Wis.

*Harry C. Hall*  
 County Surveyor  
 Oneida County