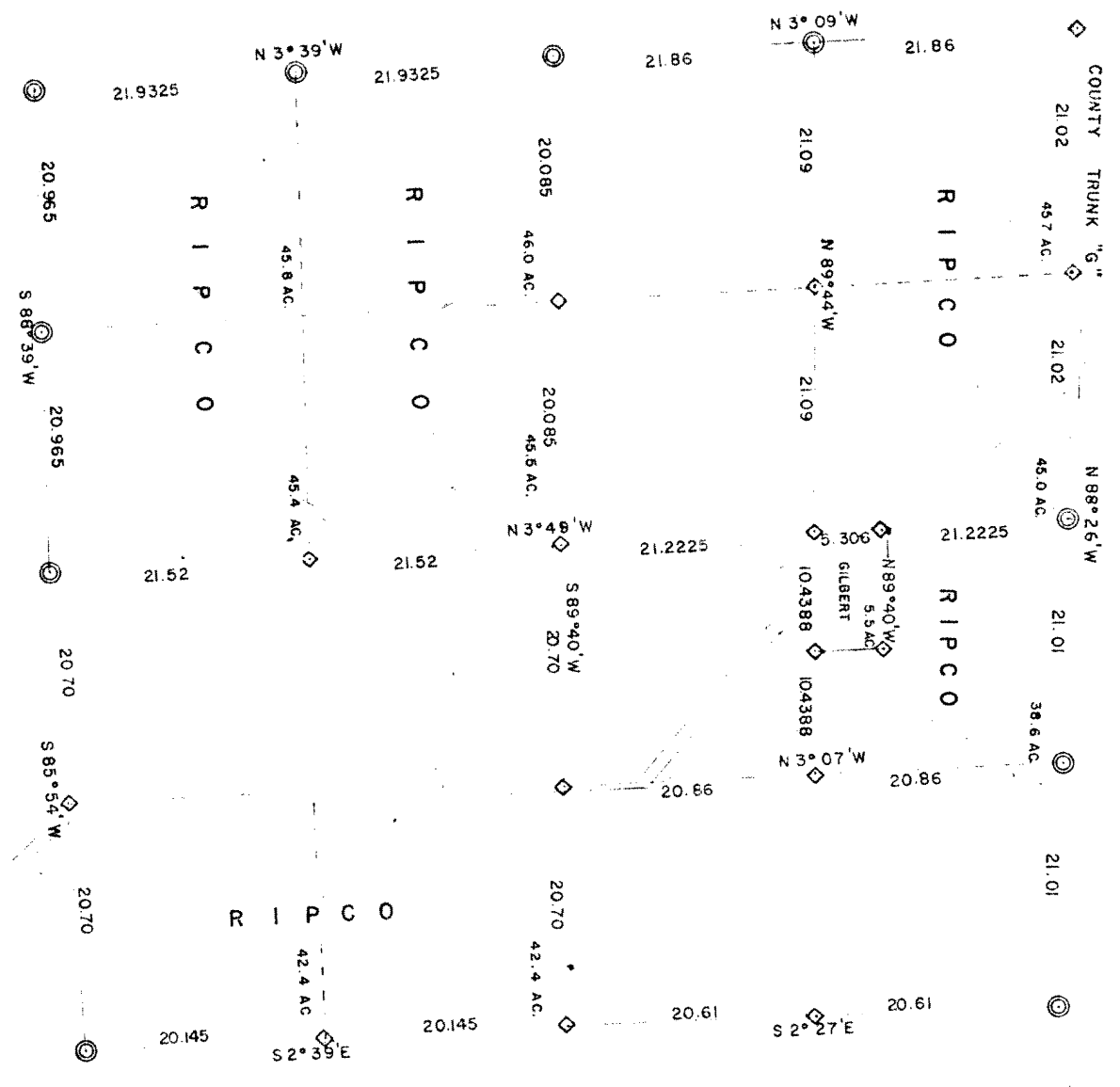


L2514



RECEIVED & FILED # L2514

Oneida County Surveyor's Office

Date FEB 14 1988

By MTH

OCS Area #

RESURVEY OF SEC. 36, T. 36N, R. 9E

ONEIDA COUNTY, WISCONSIN

SCALES: 1" = 40' CHAIN 1" = 80'

RHINELANDER FARM

EXTENSION OF ST. ABRAHAM ROAD

RHINELANDER, WISCONSIN