

EXHIBIT B

Platted Shisebogama Drive Vacation Parcels

for
Lots 1, 2, & 3; Block 1
and
Lots 21 & 22; Block 2

ROCKWOOD ESTATES SOUTH DIV. 1

SECTION 1, T39N, R5E

Town of Minocqua
Oneida County, Wisconsin

ONEIDA CO. SURVEYOR'S OFFICE

DESCRIPTION FILED

BY

LEGEND

- = 1.0" dia. iron pipe found in place.
- = 1.25" dia. iron pipe found in place.
- ⊕ = 2.0" dia. iron pipe found in place.
- ⊗ = 2.25" dia. iron pipe found in place.
- ⦿ = 2.5" dia. iron pipe found in place.
- △ = Computed position not monumented.

Monument sizes are outside diameter dimension.

Scale: 1" = 50'

MAP # **2516**

DATE FILED **JUN. 19. 2008**

BY **JAB**

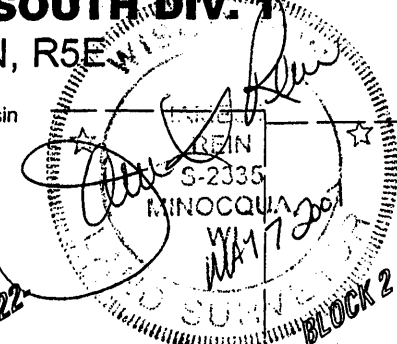
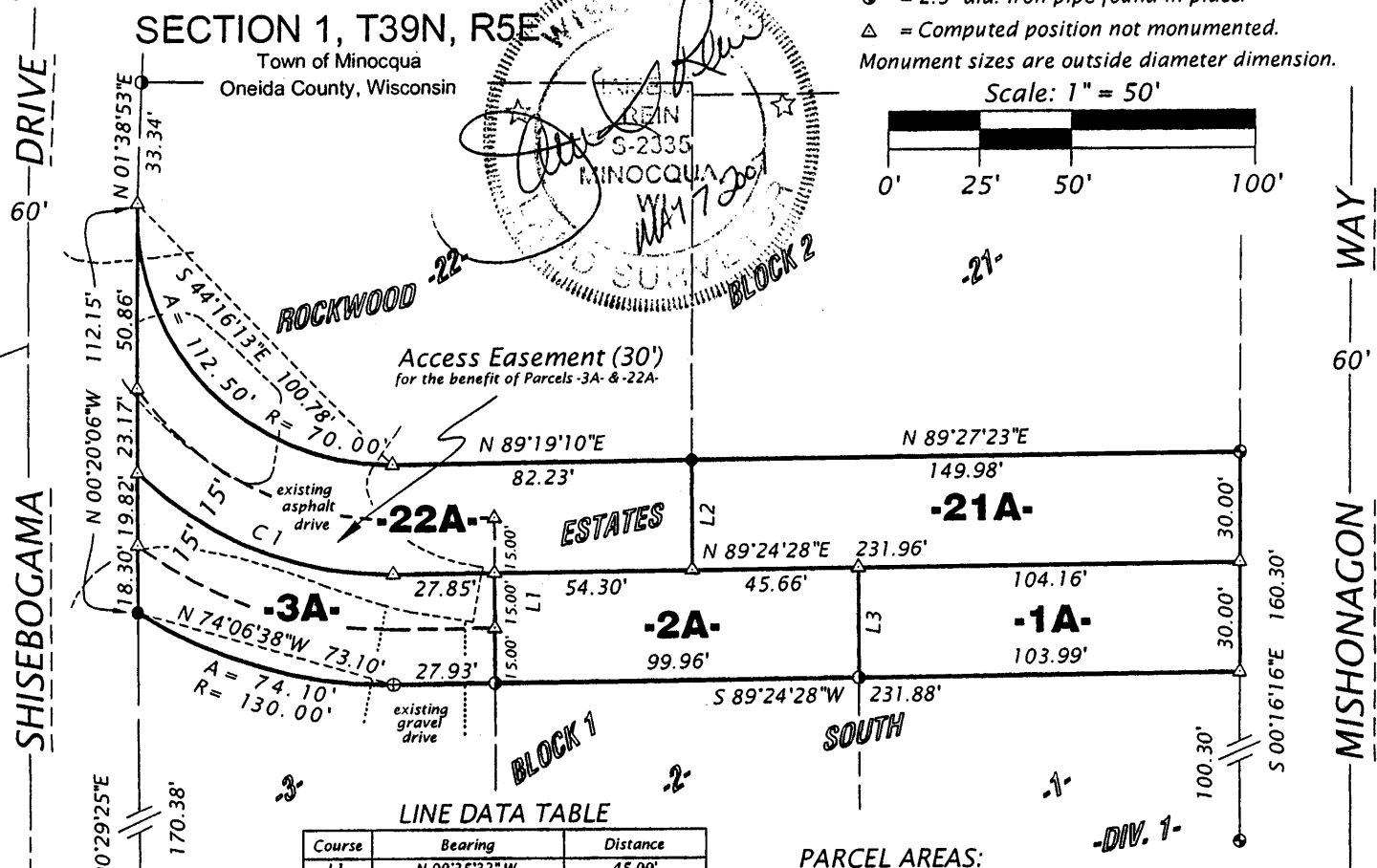
Bearing base assumed, referenced to the westerly line of Lot 3.

DESCRIPTION FILED

Block 1, ROCKWOOD

ONEIDA CO. SURVEYOR'S OFFICE

bearing S 00°29'25"E



LINE DATA TABLE

Course	Bearing	Distance
L1	N 00°35'32"W	45.00'
L2	N 00°35'32"W	30.13'
L3	N 00°35'32"W	30.00'

CURVE DATA TABLE

Curve	Radius	Length	Delta	Chord	Chord Bearing
C1	100.00'	77.66'	44°29'40"	75.72'	S 68°11'35"E

PARCEL AREAS:

- 1A- = 3,122 sq. ft.
- 2A- = 2,998 sq. ft.
- 3A- = 3,103 sq. ft.
- 21A- = 4,506 sq. ft.
- 22A- = 4,997 sq. ft.

WILDERNESS SURVEYING, INC.

Post Office Box 1111 - 8793 Earls Court
Minocqua, Wisconsin 54548
Tel. (715) 356-5100
www.wildernesssurveying.com

Map No. 07-47 exhibit-b
File No. 10 & 15-1-395
Drafted by: J. Dick
Date: May 07, 2007