

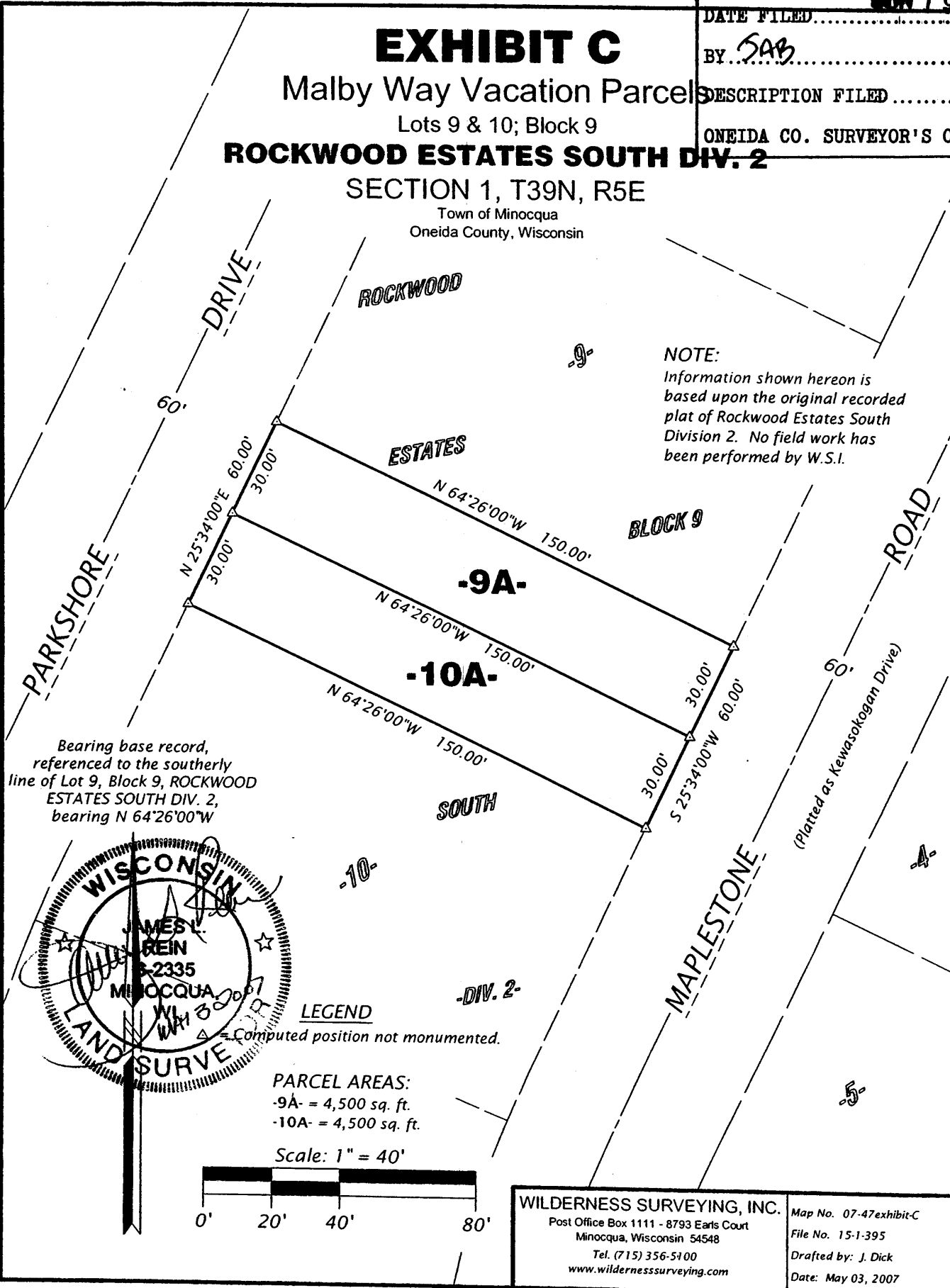
L 2517

MAP # 2517
 DATE FILED.....
 BY SAB.....
 DESCRIPTION FILED.....
 ONEIDA CO. SURVEYOR'S OFFICE

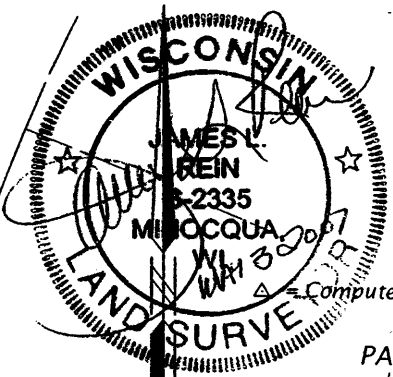
EXHIBIT C
 Malby Way Vacation Parcels
 Lots 9 & 10; Block 9
ROCKWOOD ESTATES SOUTH DIV. 2
 SECTION 1, T39N, R5E

Town of Minocqua
 Oneida County, Wisconsin

NOTE:
 Information shown hereon is based upon the original recorded plat of Rockwood Estates South Division 2. No field work has been performed by W.S.I.



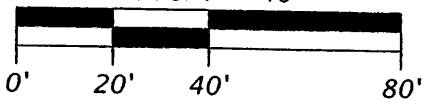
Bearing base record, referenced to the southerly line of Lot 9, Block 9, ROCKWOOD ESTATES SOUTH DIV. 2, bearing N 64°26'00\"/>



LEGEND
 Δ = Computed position not monumented.

PARCEL AREAS:
 -9A- = 4,500 sq. ft.
 -10A- = 4,500 sq. ft.

Scale: 1" = 40'



WILDERNESS SURVEYING, INC. Post Office Box 1111 - 8793 Earls Court Minocqua, Wisconsin 54548 Tel. (715) 356-5100 www.wildernesssurveying.com	Map No. 07-47exhibit-C File No. 15-1-395 Drafted by: J. Dick Date: May 03, 2007
-----------------------------------------------------------------------------------------------------------------------------------------------------------------	------------------------------------------------------------------------------------------

L 2517

D 2517